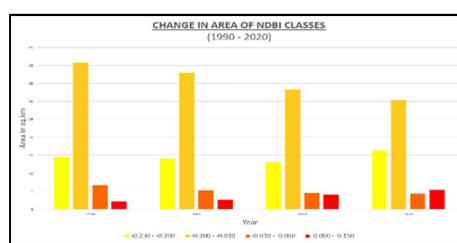
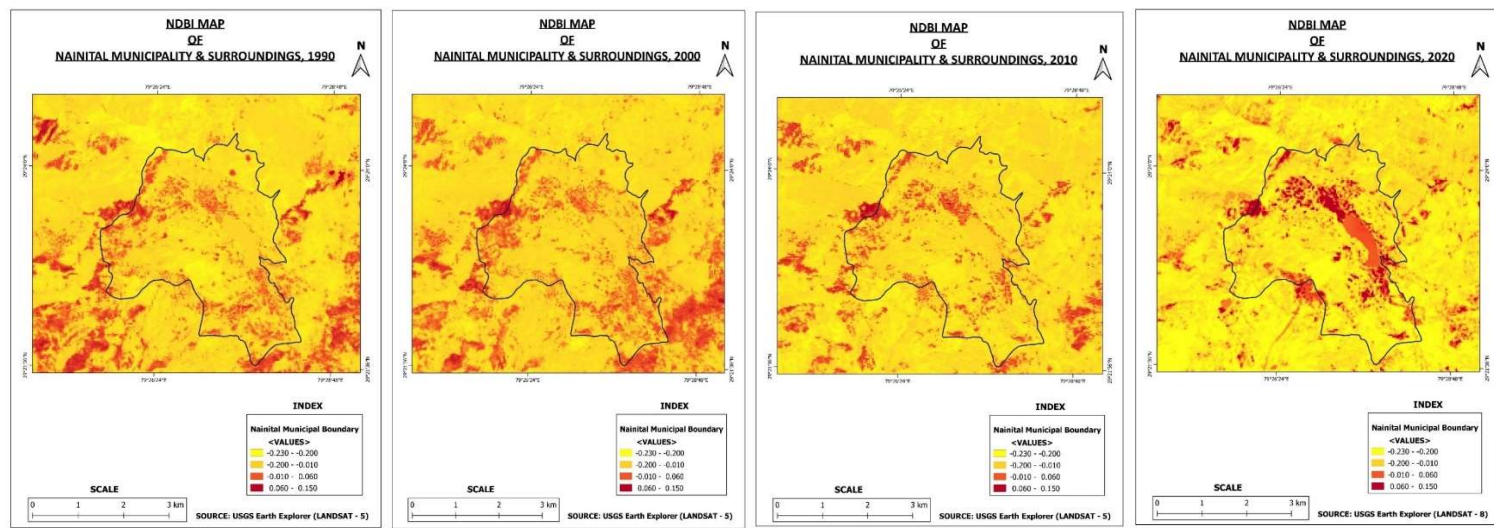
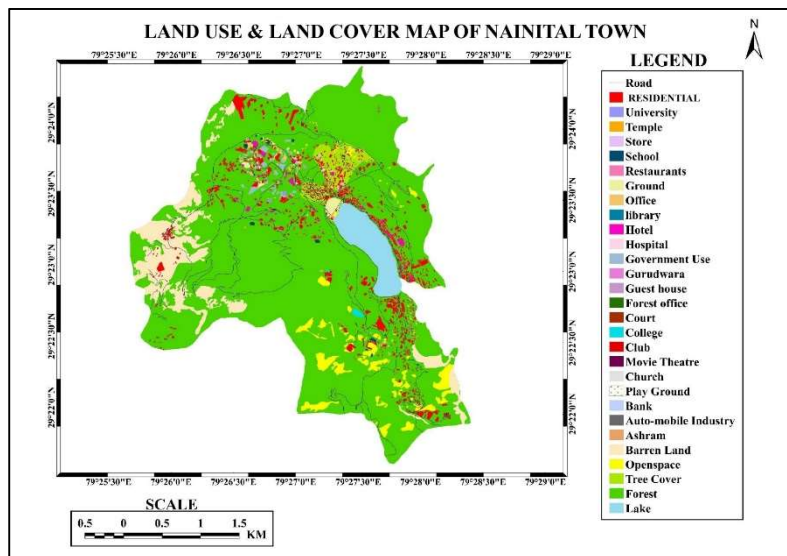
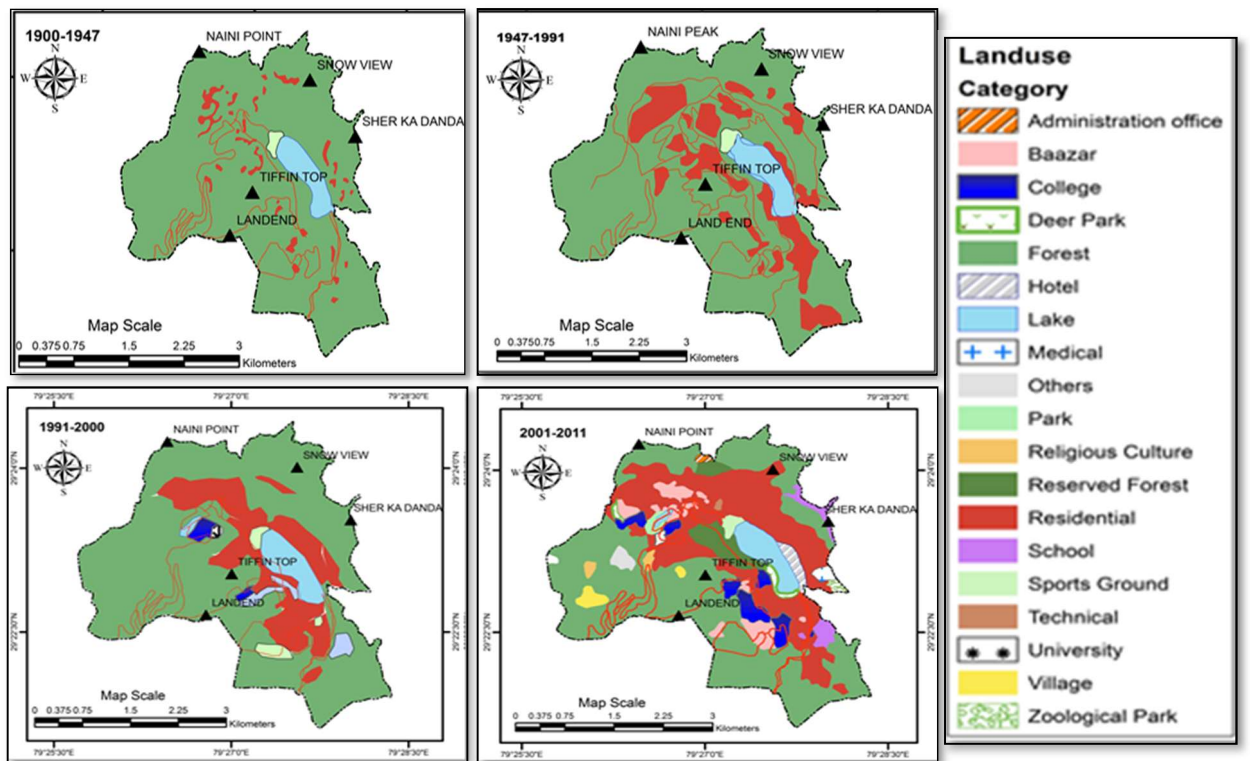


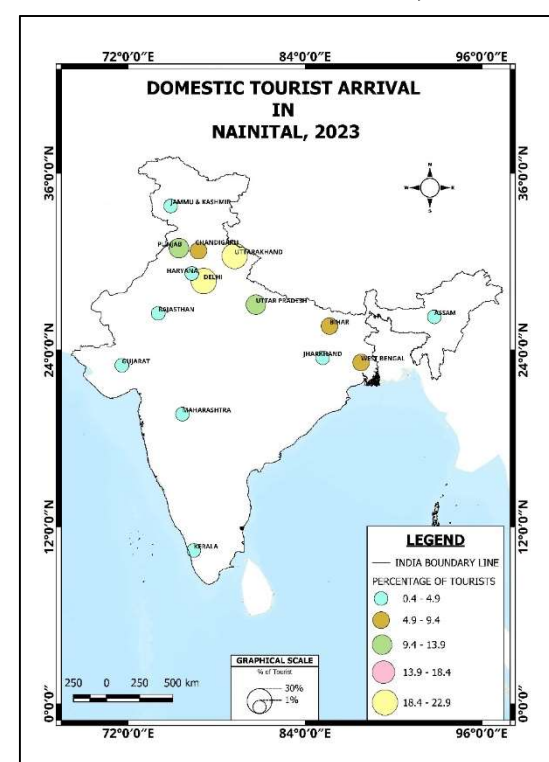
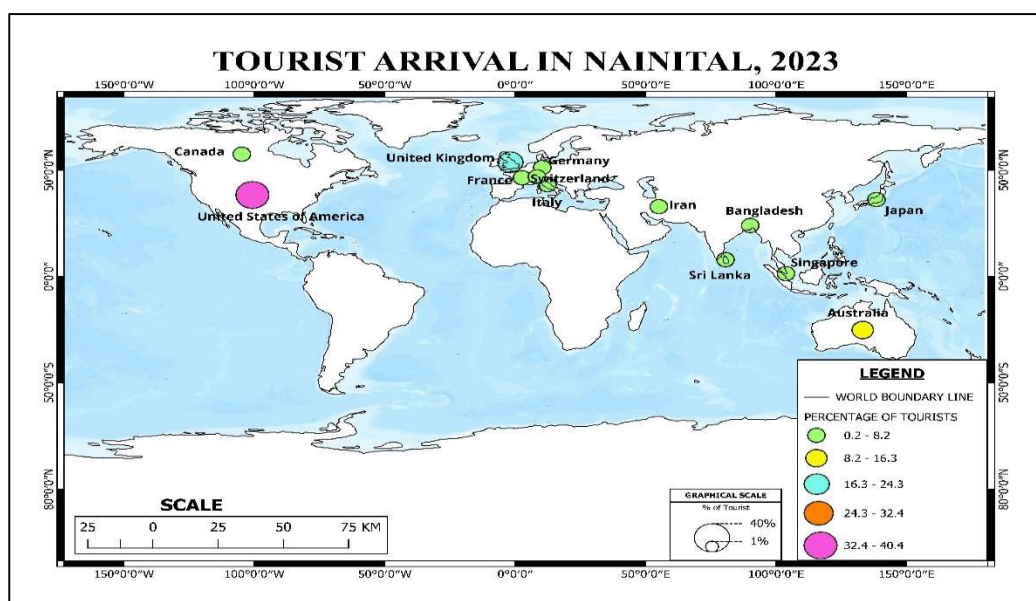
EXPANSION OF NAINITAL MUNICIPALITY AND GROWTH OF TOURISM

Nainital is a region of Kumaon Himalayas. The region develops round a lake namely Naini Tal. A portion of map no. 53 0/7 shows Nainital and its surrounding. The latitude of Nainital is 29.22'18" North and 29.23'18 North and longitude is 79.26'40" East and 79.27'51"East. The elevation of the lake above sea level is 1935.48 metres. Nainital city is situated on the hilly land around the lake. It is surrounded by the mountains. Naina peak is the highest peak of town, 2611 mts.

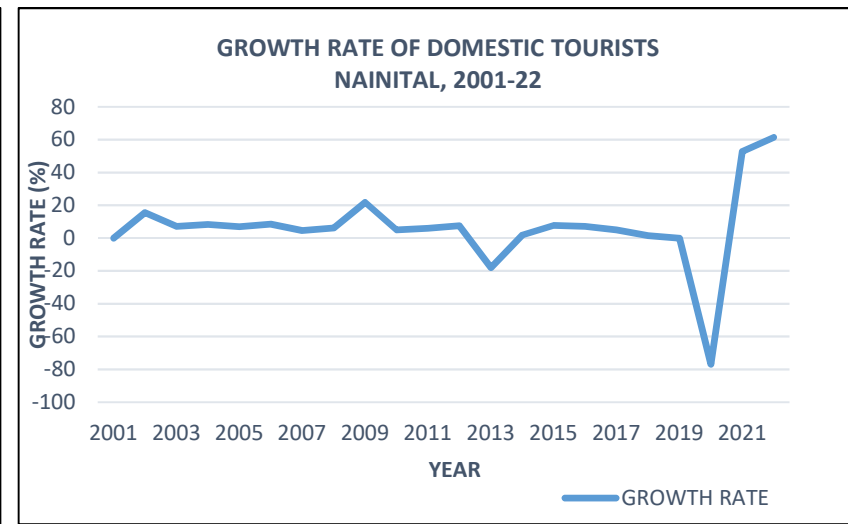
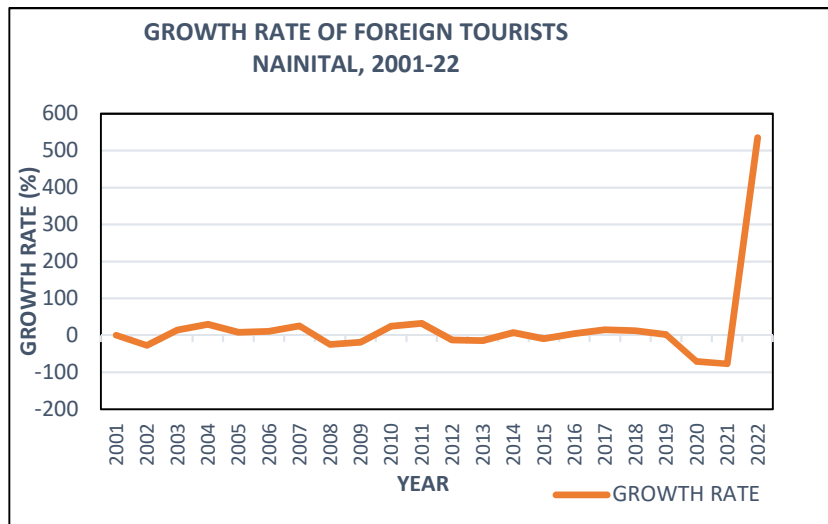
The Greater Nainital Development. Authority was established in 1984 to regulate development of the town. In of the town. In 1989, GNDA dissolved and Nainital Lake Region Special Area Development Authority (NLRSDA) was established location of residential area in physiographic regions.



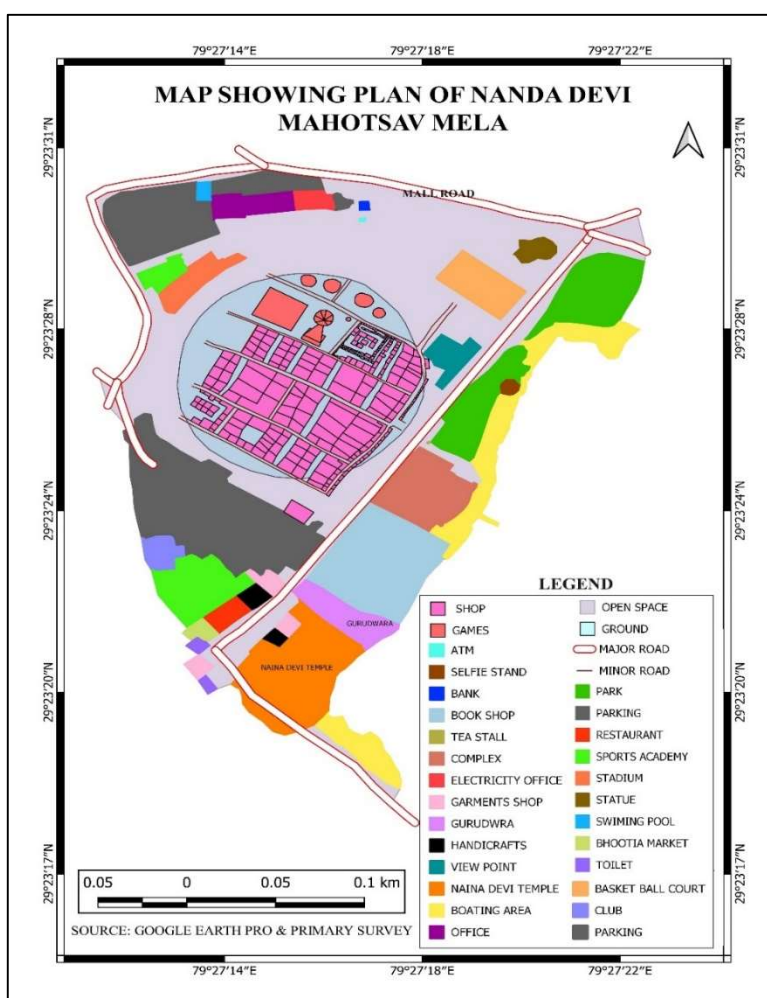
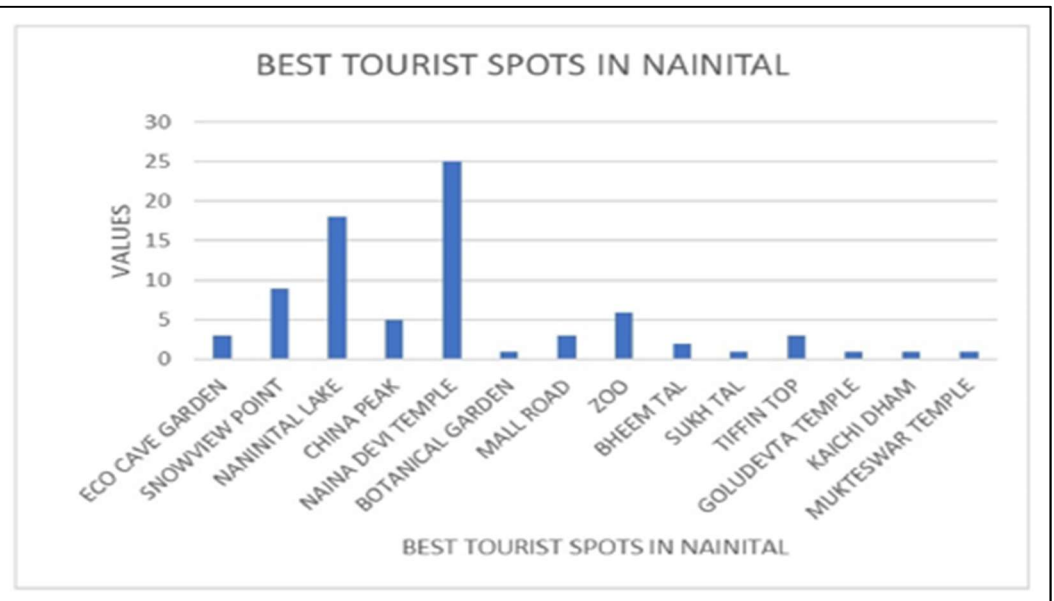
There has been a steady growth in the number of tourists arriving in Nainital. During the year, tourist influx is reported to be maximum in the months of May and June. Tourist arrival, of both domestic as well as international tourists, in Nainital. There are about 3000 rooms for tourist accommodation in Nainital.



Tourism is the main economic activity of Nainital. Traditionally, Nainital attracts large number of tourist population in the summer even when much is yet to be done to improve and develop its tourist infrastructure. As indicated by the graph, the area is mostly visited by la large number of Indian tourists. The total number of Indian tourists increased from 365941 in 2001 to 898077 in 2012.



- to place Uttarakhand on the tourism map of the world as one of the leading tourist destinations, and to make Uttarakhand synonymous with tourism;
- to develop the manifold tourism related resources of the State in an eco- friendly manner, with the active participation of the private sector and the local host communities; and
- to develop tourism as a major source of employment and income / revenue generation and as a pivot of the economic and social development in the State.



According to the Hindu Puranas, the left eye of the Goddess Sati fell into here. Thus Nainital became one of the famous 51 'Hindu Piths' of India and a large number of tourist and Hindu pilgrims come here which in turn helps the tourism of Nainital

