



PROSPECTUS
SARSUNA COLLEGE
2026-27



Follow us on facebook at "Sarsuna College Office"



Website : www.sarsunacollege.ac.in

Some Fundamental Rights under the Constitution of India

The Constitutional Foundation of a Free and Dignified Life

Right to Freedom :

Every citizen of India is entitled to the following core freedoms that empower self-expression, mobility, and professional growth:

The right to freedom of speech and expression

The right to peaceful assembly without arms

The right to form associations, unions, or cooperatives

The right to move freely throughout the territory of India

The right to reside and settle anywhere within India

The right to choose any profession or carry on any trade, occupation, or business

The right to life and personal liberty, except by a procedure established by law

The right to free and compulsory education for all children aged 6 to 14, as mandated by the State.

Cultural and Educational Rights :

India's pluralistic identity is protected through the following constitutional guarantees :

Citizens with a distinct language, script, or culture have the right to preserve and promote their heritage. No citizen can be denied admission to a state-managed or state-aided educational institution based solely on religion, race, caste, or language. Minority communities, whether religious or linguistic, have the right to establish and manage educational institutions of their choice.

In Essence: These rights are not just legal provisions; they are the spirit of democracy, equality, and human dignity. Let us know them, uphold them, and live by them.

Pledge

India is my country and all Indians are my brothers and sisters.

I love my country and I am proud of its rich and varied heritage.

I shall always strive to be worthy of it.

I shall give my parents, teachers and all elders respect and treat everyone with courtesy.

To my country and my people, I pledge my devotion. In their well-being and prosperity alone lies my happiness.

CONTENTS

Prayer	02
From the Principal's Desk	03
College Building Plan	04
Learning Infrastructure & Support	05
IQAC (Internal Quality Assurance Committee)	06
Best Practices of the College	07
Collaborations / MOU	08
Library	09
Faculty	10
Non Teaching Staff	11
Subjects and their Scope : Higher Studies / Career Development	12
Placement & Career Guidance, Add on & Value Added Courses	16
Field Work and Excursions	17
National Service Scheme (NSS)	18
Seminars, Workshops & Other Programmes	19
Co-Curricular Activities	20
Disciplinary and Examination Norms	21
Financial Assistance and Awards	22
Courses offered under NEP	23
Subject Combination	24
Fee Structure 2026 - 27	26
PG Fee Structure	28
Academic Calender	29
Holiday List	30
Alumni Speak	32

Prayer

“Sangha Chaddang Sangha Baddhang Sangha Manang si janatam
Samano mantra Samiti Samani mano Saho chittamesham,
Samaniba akuti Samanah hridayaniba,
Samanamastu bo mono jatha bo susahasati.”

May you come together in a union, speak the same language and let your minds be illuminated by the same light of knowledge. May you have the same inspiration, achievements, reason, power of judgements which bind you together. Let your aims, heart and reason lead you towards Union. May you be blessed by that which achieves ultimate Union.

প্রার্থনা

‘সং গচ্ছধ্বং সং বদধ্বং সং বো মনাংসি জানতাম্।

...

সমানো মন্ত্রঃ সমিতিঃ সমানী সমানং মনঃ সহ চিত্তমেষাম্।

...

সমানী ব আকুতিঃ সমানা হৃদয়ানি বঃ।

সমানমস্ত বো মনো যথা বঃ সুসহাসতি’ ॥

তোমারা সন্মিলিত হও; একবিধ বাক্য প্রয়োগ কর; তোমাদের মনসমূহ সমানরূপে জ্ঞাত হউক। ইহাদের স্তুতি একরূপ, প্রাপ্তি একবিধ, অন্তঃকরণ একরূপ, বিচারজ জ্ঞান একবিধে একীভূত হউক। তোমাদের সংকল্প সমান, তোমাদের হৃদয়সমূহ সমান ও তোমাদের অন্তঃকরণসমূহ সমান হউক। যাহাতে তোমাদের পরম ঐক্য হয় তাহাই হউক।

From the Principal's Desk

Sarsuna College is located in the heart of South-West Kolkata and it stands as a vibrant centre of higher education committed to academic excellence, inclusivity and holistic development to the young minds. It gives me immense pleasure to welcome you to our esteemed institution. It offers a wide spectrum of 16 undergraduate courses with honours in Arts, Science, and Commerce and two postgraduate programmes, namely Computer Science and Geography under the affiliation of the University of Calcutta along with multiple Add-on and Value-added courses. As we present this prospectus, we also take pride in celebrating our Silver Jubilee — a milestone that reflects 25 years of dedication to such academic excellence and holistic development.



Our college has consistently strived to create an environment where knowledge meets values. Inspired by the timeless ideals of Swami Vivekananda, our institution strives to instill in students the values of self-discipline, integrity, service to humanity, and fearless pursuit of truth. His vision of education as the manifestation of the perfection already within each individual guides our philosophy and pedagogical practices. We aim to empower students to discover their true potential and contribute meaningfully to society.

Over the years, we have developed a robust academic framework supported by a team of highly qualified and committed faculty members as well as efficient and dedicated non-teaching staff to drive the institute to the apex of excellence. The college boasts excellent infrastructure that supports both academic and extracurricular pursuits. Spacious classrooms, well-equipped laboratories including GIS laboratory and the BOOST laboratory, a fully automated resourceful library with OPAC, and modern technological facilities create a conducive learning atmosphere in our campus. In addition, our campus provides opportunities for cultural activities, indoor and outdoor sports in the adjacent ground, and community engagement through social-outreach programmes particularly by our NSS unit, ensuring the all-round development of our students. In our institution, emphasis is laid on skill development, critical thinking, and innovation, enabling our students to adapt to the dynamic demands of the modern world.

We are deeply committed to providing value-based and career-oriented education. Various career guidance and placement driving programmes, seminars, poster competitions, workshops, internships, excursions and industry visits are regularly organized to bridge the gap between academic learning and professional requirements. Our faculty members are truly mentors of our students in academic and psychological issues. All the Departments of our college continually organize parents-teachers meetings to know the reflection of the young minds regarding our institution. Our goal is to empower students to build meaningful careers while contributing positively to society.

One of our greatest strengths is our alumni network. Our former students have excelled in diverse fields — academics, administration, industry, entrepreneurship, and social service — bringing pride and recognition to the institution. Their achievements stand as a testament to the quality of education and values imparted here.

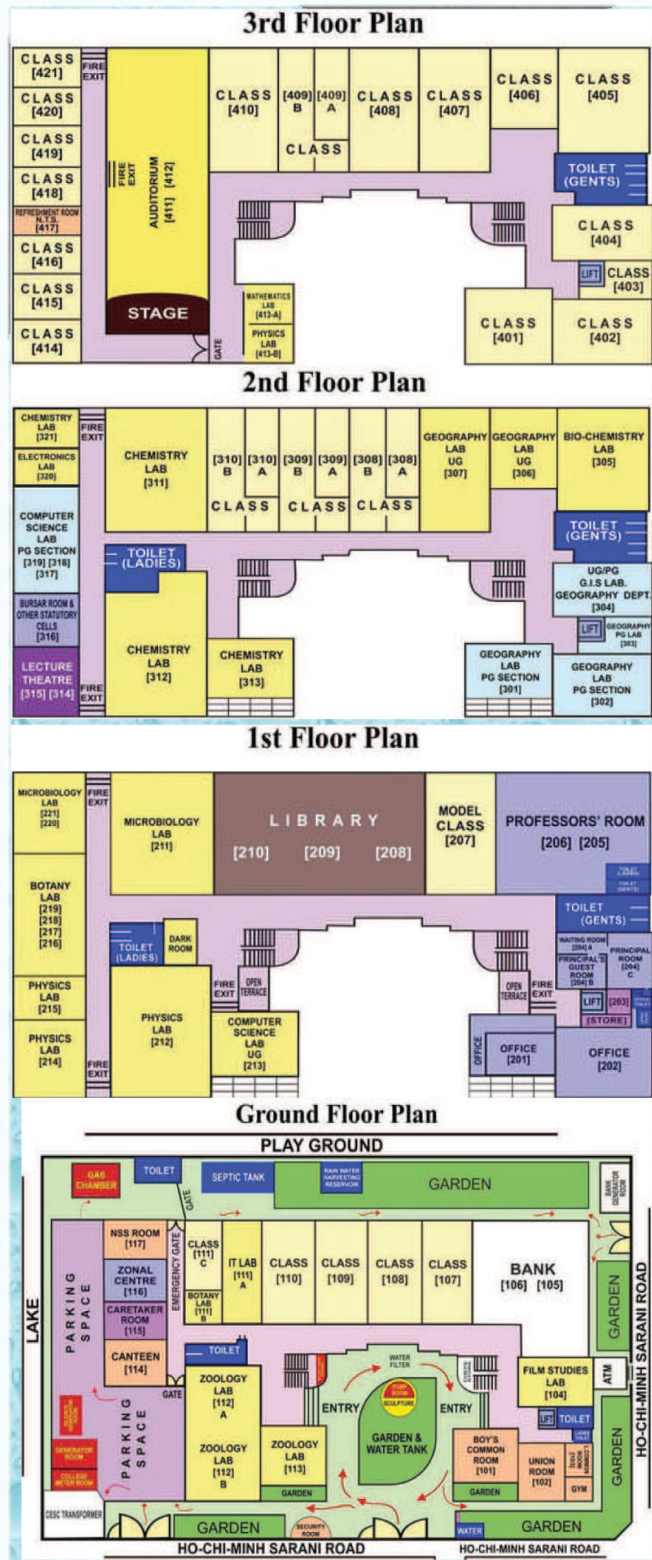
As we celebrate our Silver Jubilee, we reaffirm our commitment to excellence, inclusivity, and innovation. We invite aspiring students to become a part of this vibrant academic community and embark on a journey of learning, growth, and self-discovery. Together, let us strive to uphold the ideals of knowledge, character, and service, and work towards building a better future.

I extend my best wishes to all prospective students and hope that this institution will serve as a strong foundation for your future endeavors.

A handwritten signature in blue ink that reads "Gopal Chandra Mandal". The signature is fluid and cursive.

Dr. Gopal Chandra Mandal

College Building Plan



Introduction and General Information:
Sarsuna College

- ◆ Estd.: 11th October 1999
- ◆ Affiliation Date: 19th March, 2005
- ◆ Area: Sarsuna, District: Kolkata
- ◆ Affiliation: Calcutta University, Approved by UGC
- ◆ Management: West Bengal Govt. Aided
- ◆ NAAC Accreditation : B (2016)
- ◆ Shift: Day Shift, College Hours:
10-30 am to 5-00 pm [Monday to Friday]
and 10-30 am to 2-30 pm [Saturday]
(Prayer: 10:30 am and Tiffinbreak: 1:30 pm)
- ◆ Sarsuna College Code: 563
- ◆ Total area (inacre): 1.606 and
total constructed area (insq.m): 6,503
- ◆ College Building: The Building is 4 storeys
consisting of Classrooms, Laboratories,
Principal's room, Professor's room, Office,
Seminar Hall, Library, Museum etc.
- ◆ Stream/Faculty: Arts,
Science and Commerce (Co-education)
- ◆ Regular Post Graduate Course: Computer
Science and Geography, affiliated to The
University of Calcutta, from the year 2014
- ◆ 1st Professional Course: PGDM on GIS &
Remote Sensing Course.

Learning Infrastructure & Support

- **Smart and Virtual Class Rooms:**

Several Class rooms are equipped with LCD projector and a few of them have ICT facilities.

- **IT Infrastructure and Computers:**

Most of the departments have adequate IT resources, have adequate number of computers, laptops, notepads etc. as per requirement of the curriculum. A few departments like Computer Science, IT [Commerce], Geography, Physics and Mathematics have separate Computer Laboratories. These resources are mainly utilised in U.G. [Hons] and P.G. courses as well as for the extensive research purpose of college teachers and students. Several class rooms are equipped with LCD projectors and a few have ICT facilities such as smart boards and Wi-Fi facilities.

- **Laboratory:**

All Departments having practical papers in C.U. curriculum have adequate laboratory facilities.

These laboratories are well equipped with essential amenities, samples, specimens and updated instruments as per the C.U. requirements.

Also the laboratories are safety compliant and have adequate safety measures like fire extinguisher, chemical hood, exhaust arrangements.

Department of Chemistry possesses its own Distilled water plant for laboratory use.

A centralized LPG chamber is situated on the ground floor of the college, from where LPG is supplied to different departmental practical rooms.

- **Some Important instruments in the College:**

FT-IR [Perkin Elmer], UV-Vis [Perkin Elmer] spectrophotometer [Chemistry], UV-Vis spectrophotometer [Optizen], Cold ultra Centrifuge, BOD incubator, Laminar air flow cabinet, autoclave [Botany], hi-8 amera and F.C.P. edit setup technology [MAC OSX10.5.6] with DVD player [Film Studies], U.V. transilluminator, B.O.D. incubator, Microfuge, DNA gel apparatus [Microbiology], Weather Station, satellite imageries, Global Positioning Systems, Pollutant measuring instrument, (Geography).

GIS LAB:

This is a highly technocentric Laboratory with 32 computers, projector and GIS/RS softwares like Arc GIS master labkit, Arc GIS pro, ENVI, Map Info, Erdas Imagine, Autocad and QGIS. This Lab is designed for training of Geography students in Geoinformatics. It helps in all types of geospatial analysis assisting research and projects. Based on GIS training credentials spanning a decade, the college has been recognised as Centre of Competence (CoC) by Esri India. Sarsuna College Dept. of Geography is distinguished in GIS training alongside institutions like IIT Roorkee, Mumbai, Tirupati, BIT Mesra, Symbiosis Pune, Punjab University, etc. We have procured the latest version of Arc Pro GIS RS software along with Enterprise functions.

BOOST LAB:

The Central Research Laboratory for Biological Sciences sponsored by BOOST Programme (2017-18) is another unique Lab, one of its kind and meant for high end research.

Instruments present in Boost Lab are:

Thermocycler (PCR machine), UV transilluminator, Binocular Microscope with photographic attachment, Refrigerated Centrifuge (Cold Centrifuge), pH meter (with electrode), UV-Visible spectrophotometer, Polyacrylamide Gel electrophoresis apparatus, ELISA reader, Micro oven, Micropipette, Submarine Gel Electrophoresis, Electrophoresis power pack (multiple jacks), Microtome with hot plate, Homogeniser, Micro centrifuge, Vacuum Pump, Digital balance, Incubator oven, Refrigerator, Autoclave and Gel Transfer apparatus.



IQAC (Internal Quality Assurance Committee)

Dr. Gopal Chandra Mandal (Chairperson)

Dr. Pintu Kumar Maji (Co-ordinator)

Dr. Shyamalendu Chatterjee (Governing Body Member)

Sri Uttam Kumar Bhakta (Teacher Member)

Dr. Tanmay Bir (Teacher Member)

Dr Ujjwal Das (Teacher Member)

Dr. Chameli Mondal Pandit (Teacher Member)

Dr. Nabanita Sengupta (Teacher Member)

Dr. Sanjib Kumar Gupta (Teacher Member)

Dr. Abul Hasan Sardar (Teacher Member)

Dr. Krishna Daripa (Teacher Member)

Dr Jaydeep Sarangi (Principal, New Alipur College)
(Senior Administrative Officer)

Dr. Lopamudra Chaudhury (Alumni Member)

Sri Srijon Adhikary (Student Member)

Sri Bratin Sinha (Guardian Member)

Sri Sadhan Kumar Roy (Head Clerk)

Sri Suvadeep Mukherjee (Accountant)

Sri Ayan Mukherjee (Clerk)

Significant Contributions Made by IQAC, Sarsuna College :

The Internal Quality Assurance Cell (IQAC) of Sarsuna College has played a pivotal role in enhancing the institutional quality culture through a broad range of initiatives and sustained efforts. Its significant contributions include :

Academic and Holistic Enrichment: IQAC has been instrumental in organizing diverse programmes on such pressing issues related to environment, health, gender sensitivity, career development, and student-staff orientation. These initiatives have significantly contributed to the holistic development of stakeholders.

Environmental Awareness and Sustainability: The cell has actively promoted environmental ethics among students and encouraged them to appreciate and support the use of organic and green products fostering sustainable thinking.

Resource Optimization: IQAC has taken proactive steps to encourage effective utilization of college resources, including laboratories and human capital, to support academic and research activities.

Strengthening Outreach and Extension Activities: The cell has actively organized outreach and extension.

Add-on and Collaborative Programmes: The cell fostering a sense of social responsibility has introduced new Add-on courses while expanding among students and building strong community engagement.

Faculty Development and Career Advancement: The IQAC has facilitated faculty development through promotions and has also provided timely assistance with Career Advancement Scheme.

Alignment with NEP and Curriculum Reforms: In view of the National Education Policy (NEP), IQAC conducted orientation workshops on Curriculum and Credit Framework (CCF) and internship-related matters, ensuring preparedness and alignment with policy reforms.

Health Awareness and Medical Camps: IQAC has organized a series of health-focused engagements through joint activities. The college has taken initiatives in nearby localities, including health check-up camps, blood donation drives hygiene, and the prevention of common diseases, ventures, public health awareness and promoting community well-being.

Promoting Entrepreneurship: Emphasizing self-reliance and livelihood generation, the cell has awareness programmes encouraged students to take up entrepreneurial ventures, thereby preparing them for future employment and innovation challenges

Best Practices of the College

Sarsuna College has taken up several initiatives to promote holistic learning among students and to make the process of learning interesting as well as enriching.

Some of the Best Practices followed by the college are listed below:

All departments are encouraged to organise **Students' Seminars** where the students are inspired to make presentations on various topics related to their courses.

All departments have their own **Wall Magazines** which are made completely by the students. This allows them to express themselves creatively as well as academically.

The college has an active **Career Guidance and Placement Cell** which regularly organises career related seminars as well as placement drives. Several students have been placed in various organisations.

The **NSS** unit of Sarsuna College organises several social outreach programmes to build awareness about community well-being, sustainable environmental practices and eradication of social evil.

Indian Knowledge System and Value Education Cell organises Talks, Seminars and plans to introduce Workshops for induction of values and ethics through the teachings of great Indian thinkers and philosophers.

School-College Co-ordination Sub-Committee liaises between local schools and the college by organising outreach programmes and talks to expand the knowledge base of school students and develop their awareness of the scope of different subjects for higher studies and career opportunities to shape their future.

The college has signed **MOUs** with several colleges, universities, NGOs and national and multinational companies to bridge the gap between students who represent the potential job market and employers to enhance the chance of a better professional future for students of the college.

The college has an active **Women and Gender Development Cell** that consistently promotes gender equality through seminars and other sensitisation programmes.

Workshops, talks and fairs are organized at the college with help from personnel from SHGs and NGOs to encourage **entrepreneurship** among students with flair for craftsmanship and marketing.

The library organises a **Library Orientation Programme** for students to make them familiar with library resources and search tools.

The college has an active and vigilant **Anti Ragging and Grievance Redressal Cell**. The college takes a zero - tolerance policy against ragging and abuse.



Collaborations / MOU

Sarsuna College has signed MOUs and has planned collaborations with several organizations to facilitate and promote holistic learning. These collaborative activities extend beyond the curriculum and also provide the students with an exposure to the opportunities and challenges present in the job market today.

Following are the organizations with whom Sarsuna College has signed MOUs for various collaborative activities:

Educational

- ◆ Deshabandhu Mahavidyalaya
- ◆ Gangadharpur Mahavidyamondir
- ◆ Lal Baba College
- ◆ Jogeshchandra College
- ◆ Vidyanagar College
- ◆ Neotia University, Kolkata
- ◆ Kusum Devi Sunderlal Dugar Jain Dental Colleges and Hospital
- ◆ Brainware University
- ◆ IEMA Research and Development Pvt Ltd

NGO

- ◆ Empathy (Rotary Club)
- ◆ Anahat For Change Foundation (NGO)
- ◆ Alzheimer's & Related Disorders Society of India (ARSDI, NGO)
- ◆ Academy of Skill Development

Corporate

- ◆ Versicol
- ◆ Fargo Consultants
- ◆ Albert David LTD
- ◆ Healious Global Pvt Ltd
- ◆ Hulladek Recycling Pvt Ltd
- ◆ OCS Kolkata
- ◆ Softa Geotechnical Services Ltd
- ◆ TECHIT



Library

Library at a Glance :

Situated at the 1st floor of main building, Library of Sarsuna College started in 1999 with only 86 books and now is a rich collection of 30,550 books on different subjects, 250 bound volumes and 123 non book materials. The Central Library is well equipped with Reference Books, text books, journals, periodicals and newspapers.

- E-mail Alerts : sarsunacollegelibrary@gmail.com
- The College Central Library is under CCTV surveillance.
- Open access system: students are allowed to choose their books from the shelves.
- Library has WiFi connection and gives internet facility to users.
- Users can access WebOPAC, 24/7 through KOHA cloud. <https://scl-opac.softlib.in>
- Students can borrow books for home use from the Central Library and in addition to that, students of Honours courses can borrow one book from their Departmental Libraries.
- Library can access ONOS (One Nation One Subscription).

Library Timing : Monday to Friday:10:30AM-5:00 PM,
Saturday:10:30AM-5:00PM

General Rule :

Library card is a must for anyone who enters the library.



Faculty

Humanities :

Bengali :

Dr. Tanmay Bir
Sri Madhab Sarkar
Sri Tarun Kanti Mandal (Head)
Sri Debabrata Chakraborty
Smt. Ishita Dutta

Education:

Dr. Indrani Nath (Head)
Dr. Pintu Kumar Maji
Smt. Jayeeta Saha Pal
Smt. Anindita Pani
Smt. Gargi Chatterjee

English:

Dr. Sarottama Majumder
Dr. Nabanita Sengupta (Head)
Sri Sagnik Bhattacharya
Sri Mrinmay Mandal

Film Studies :

Dr. Dilip Xalxo (Head)
Dr. Gautam Chakraborty

History:

Dr. Anamitra Chattopadhyay (Head)
Sri Prasenjit Paul
Smt. Namita Bose Biswas
Sri Subhasish Ghosh
Sri Amit Kumar Chattopadhyay

Political Science :

Sri Sajib Chandra Mondal
Sri Suvajit Mondal (Head)
Smt. Sushmita Medda (Dutta)
Smt. Swagata Saha

Commerce:

Dr. Sanjib Mitra (Head)
Sri Uttam Kumar Bhakta
Dr. Sreyasi Bandyopadhyay
Smt. Rupa Mukherjee
Sri Subrata Sarkar
Sri Nitai Biswas
Sri Partha Mitra
Sri Raja Dey
Smt. Rima Banerjee
Smt. Piyali Chatterjee
Sri Shib Sankar Naskar

Science :

Bio-chemistry:

Dr. Sreyasi Palit
Sri Bankim Mondal (Head)
Dr. Monorama Polley Mondal
Smt. Swagatika Samantaray

Botany :

Dr. Sanchaita Lala (Head)
Sri Subhamoy Chatterjee
Sri Mrinmoy Mahajan

Chemistry:

Dr. Ujjwal Das (Head)
Dr. Ashis Dey
Dr. Suparna Pal
Smt. Subhalakshmi Ghosh
Dr. Sharmishtha Dutta Dhatt
Smt. Swagata Sen

Computer Science:

Dr. Krishna Daripa (Head)
Smt. Piu Bera
Sri. Sourav Kumar Dey
Sri. Monodeep Banerjee

Economics:

Dr. Gopal Chandra Mandal (Principal)
Dr. Piyali Das Gupta
Dr. Chameli Mandal Pandit (Head)
Dr. Debamitra Banerjee

Electronics:

Dr. Mahua Chakraborty (Head)

Geography:

Dr. Arpita Bhattacharjee
Smt. Prashasti Bhattacharyya
Dr. Saswati Roy (Head)
Smt. Sumana Ghatak

Dr. Debasmita Ghosh
Smt. Angana Basu
Smt. Poushali Dasgupta
Smt. Sangita Paul

Mathematics:

Dr. Tapas Lowha (Head)
Sri. Manab Maity

Microbiology:

Dr. Sutapa Ganguly (Head)
Dr. Abul Hasan Sardar
Smt. Swapna Dey
Dr. Lopamudra Choudhury
Dr. Sugata Datta
Sri Abhishek Chatterjee

Physics:

Dr. Suman Sinha (Head)
Dr. Sulakshana Mondal
Dr. Partha Hajra
Sri. Gairik Saha

Statistics:

Dr. Sanjib Kumar Gupta (Head)

Zoology:

Dr. Indraneel Saha (Head)
Smt. Ishita Ray
Smt. Rituparna Sarkar
Dr. Barnali Sarkar
Sri Suvajit Dey
Smt. Swagata Palit

Environmental Science:

Smt. Arpita Das

Library:

Dr. Anindita Basu [Librarian]



Non Teaching Staff

Sri Sadhan Kumar Ray (Cashier), Acting Head Clerk
Sri Suvadeep Mukherjee (Accountant)
Sri Mukul Sarkar (Clerk, L.D.)
Sri Prabir Roy Chowdhury (Clerk cum Typist)
Smt. Mou Banerjee Mishra (Clerk, L.D.)
Sri Sourav Mondal (Clerk, L.D.)
Sri Ayan Mukherjee (Clerk, L.D.)
Sri Suman Bhaduri (Office Peon)
Sri Balaram Mondal (Library Clerk)
Smt. Srabani Dutta (Lady Attendant)
Sri Tonmoy Sarkar (Electrician / Caretaker)
Sri Bijoy Krishna Dutta (Laboratory Attendant)
Sri Bimalendu Karmakar (Laboratory Attendant)
Sri Dipankar Sarkar (Laboratory Attendant)
Sri Sukanta Bhattacharjee (Laboratory Attendant)
Sri Raju Tarafder (Laboratory Attendant)
Sri Sourav Naskar (Laboratory Attendant)
Sri Rajib Bhar (Laboratory Attendant)
Sri Prabir Manna (Laboratory Attendant)
Sri Kanti Lall Dey (Laboratory Attendant)
Smt. Pritilata Baidya (Laboratory Attendant)

Sri Surajit Kundu (Laboratory Attendant)
Sri Ashis Mukherjee (Laboratory Attendant)
Sri Probal Ghosh (Laboratory Attendant)
Sri Kshiti Prakash Mistry (Laboratory Attendant)
Smt. Sukla Mitra (Laboratory Attendant)
Sri Ranadeb Chakraborty (Laboratory Attendant)
Sri Anirban Bhattacharyya (Laboratory Attendant)
Sri Bapi Das (Laboratory Attendant)
Sri Avijit Majumder (Laboratory Attendant)
Sri Amit Mukherjee (Laboratory Attendant)
Sri Tapan Sengupta (Laboratory Attendant)
Sri Bachu Sen (Attendant, Principal's Chamber)
Sri Guru Prasad Chatterjee (Library Peon)
Sri Barun Dey (Library Peon)
Sri Mangal Halder (Library Peon)
Sri Panchu Gopal Naskar (Sweeper)
Sri Suresh Chandra Balmiki (Sweeper)
Sri Ramkrishna Bhattacharjee (Guard)
Sri Sukhen Das (Guard)
Sri Babulal Bhattacharjee (Guard)
Sri Dinesh Das (Guard)



Subjects and their Scope : Higher Studies / Career Development

BENGALI

Introduced : 1999 (GEN) 2002 (HONS)

Medium : Bengali

Scope: Higher studies : Post Graduation like M.A. in Bengali Literature, Linguistics, Comparative Literature and Mass Communication in different Universities. M.Phil., researchwork / Ph. D.

Career : Eligible for various competitive examinations like SSC, NET, SET, PSC, UPSC [Govt. Job].
Academic profession : Teacher of schools / colleges Jobs like Journalism and Mass Communication, Interpretation, Advertising, Creative Writing, Proof Reading, Publishingetc.

EDUCATION

Introduced : 1999 (GEN) 2003 (HONS)

Medium : ENGLISH / BENGALI

Scope : Higher studies : Post Graduation like M.A. M.Phil. After P.G.research work / Ph.D.

Career : Eligible for various competitive examinations like SSC, NET,S ET, PSC, UPSC [Govt. Job].
Academic profession : Teacher of schools / colleges.

ENGLISH

Introduced : 1999(GEN) 2002 (HONS)

Medium : ENGLISH

Scope : Higher studies : Post Graduation like M.A. [English Literature, Linguistics, Comparative Literature, Journalism and Mass Communication], M.Phil. After P.G. Research work/Ph. D.

Career : Eligible for various competitive examinations like SSC, NET, SET, PSC, UPSC [Govt. Job].
Academic profession: Teacher of schools/colleges, Copy writers and Proof Readers.

HISTORY

Introduced : 1999 (GEN) 2002 (HONS)

Medium : ENGLISH / BENGALI

Scope : Higher studies: Post Graduation like M.A., M.Phil., After P.G. research work/Ph.D.

Career : Eligible for various competitive examinations like SSC, NET, SET, PSC, UPSC [Govt.Job].
Archaeology, Museology etc.
Academic profession. Teacher of schools / colleges.

FILM STUDIES

Introduced : 1999 (GEN)

Medium : ENGLISH / BENGALI

Scope : Higher studies: Film Journalism, Acting, Editing etc.

Career : Film Direction / Script-writing, Electronics media and TV Channels, Acting, Editing. Government or private houses of cinema production. Various competitive examinations like SSC, NET, SET, PSC, UPSC [Govt.Job].
Academic Profession: Teacher of colleges.

POLITICAL SCIENCE

Introduced : 1999 (GEN) 2002 (HONS)

Medium : ENGLISH / BENGALI

Scope : Higher studies : Post Graduation like M.A. [Political Science and Sociology], can study International Relations, Journalism and Mass Communication, M.Phil. After P.G. research work / Ph. D.

Career : Eligible for various competitive examinations like SSC, NET, SET, PSC, UPSC [Govt.Job].
Academic profession : Teacher of schools / colleges.

COMMERCE

Introduced : 1999 (GEN) 2001 (HONS)

Medium : ENGLISH / BENGALI

Scope : Higher studies : Post Graduation like M.Com., can opt for MBA course, M. Phil. After P.G. research work / Ph D. or can join a professional course like CA, CFA, ICWA, CS etc.

Career : Eligible for various competitive examinations like SSC, NET, SET, PSC, UPSC [Govt. Job], Academic profession : Teacher of schools / colleges. Can join different types of Bank, Insurance Companies, Financial Institutions, PSUs, Mutual Funds, MNCs, NBFCs, IT Companies, Stock Brokers etc.

ECONOMICS

Introduced : 1999 (GEN) 2003 (HONS)

Medium : ENGLISH / BENGALI

Scope : Higher studies : Post Graduation in Economics. After P.G. research work / Ph.D.

Career : Eligible for various competitive examinations like SSC, NET, SET, PSC, UPSC [Govt. Job]. Academic profession : Teacher of School/colleges as well as job in IT sectors and Banking, Insurance, Management, MNCs etc.

ELECTRONICS

Introduced : 1999 (GEN)

Medium : ENGLISH

Scope : Higher studies : Nowadays electronic devices are used in communications & entertainment, device application (computer, mobile etc), industrial application, medical science, instrumentation and in many other branches of Science and Technology.

Career : Eligible for various competitive examinations like SSC, PSC, UPSC [Govt. Job] Academic profession: Teacher of School / colleges as well as job in IT sectors and Banking, Electronics industries and MNCs.

Geography

Introduced : 2001 (GEN) 2002 (Hons.) 2014 (PG)

Medium : ENGLISH / BENGALI

Scope : Higher studies : Post Graduation like M.Sc., South and South-East Asian Studies, Archaeology, Rural Development from various universities and can enter specific fields like Planning Environmental, Management, Urban Development & Transportation Management, Demography and Population Studies, Human Developmental Studies Surveying, Field Work & Mapping with data analysis, Travel & Tourism Management. After P.G. research work / Ph.D.

Career: Eligible for various competitive examinations like SSC, NET, SET, PSC, UPSC [Govt. Job]. Academic profession : Teacher of colleges, having technical training in GIS and Remote Sensing can have bright careers in Government Organisations like NATMO, SOI, KMC, KMDA, NGOs, Industries, IT Sector, Planning Bodies. As well as prospects of job are in World Bank, WWF and UNO departments.

Biochemistry

Introduced : 2014 (Gen.) 2004 (Hons.)

Medium : English / Bengali

Scope : Higher studies: Post Graduation like M.Sc., can study Industrial Biochemistry, Biophysics, Molecular Biology, Biotechnology, Clinical Biochemistry, Food Biotechnology, Food & Toxicology etc. Paramedical course or in Clinical Biochemistry, M. Phil., After P.G. research work/ Ph. D.

Career: Eligible for various competitive examinations like SSC, NET, SET, PSC, UPSC [Govt. Job]. Academic profession : Teacher of colleges and medical colleges as well as job in pharmaceutical industry, clinical laboratories and hospitals.

Botany

Introduced : 2002 (Gen.) 2012 (Hons.)

Medium : English / Bengali

Scope : Higher studies: Post Graduation like M.Sc., can study many applied sciences, like Microbiology, Biochemistry, Biotechnology, Molecular Biology, Agriculture, Horticulture, Animal Husbandry, Forestry, Pharmacy, Bioinformatics, Environmental Science etc, M. Phil. After P.G. research work/ Ph. D.

Career: Eligible for various competitive examinations like SSC, NET, SET, PSC, UPSC [Govt. Job]. Academic profession : Teacher of School/ colleges as well as job in pharmaceutical industry, cosmetic industries.

Chemistry

Introduced : 2001 (Gen.) 2002 (Hons.)

Medium : English / Bengali

Scope : Higher studies: Post Graduation like M.Sc., in different branches of Chemistry, Pure and Biochemistry, Agriculture, Soil Chemistry, Environmental Science etc, B.Tech courses in Chemical Science, Polymers, Oil Tech., Ceramics, Pharmaceutical Tech., Food Tech., Paint Tech. etc. Pharmacy. After completion of P.G. scope of research work/ Ph. D in the Universities, IITs and Research Institutes.

Career: Eligible for various competitive examinations like SSC, NET, SET, PSC, UPSC [Govt. Job], Academic profession : Teacher of School/ colleges as well as job in Pharmaceutical, Chemical, Drugs, Bio-chemical industries as chemists.

Computer Science

Introduced : 2001 (Gen.) 2002 (Hons.) 2014 (PG)

Medium: English

Scope : Higher studies: Post Graduation like M.Sc., M.Tech (After M.Sc.) can study Software Developer, System Analyst, After P.G. research work/ Ph. D.

Career: Eligible for various competitive examinations like SSC, PSC, CSC, NET, SET, UPSC etc. various job opportunities in P.S.U. through GATE and in Banking (IBPS PO, IBPS SO, etc.)

Physics

Introduced : 2001 (Gen.) 2012 (Hons.)

Medium : English / Bengali

Scope : Higher studies: Post Graduation like M.Sc., M. Phil. After P.G. research work/ Ph. D.

Career: Eligible for various competitive examinations like SSC, NET, SET, PSC, UPSC [Govt. Job]. Academic profession : Teacher of school/colleges and universities as well as job in various industries.

Mathematics

Introduced : 2001 (Gen.) 2012 (Hons.)

Medium : English / Bengali

Scope : Higher studies: Post Graduation like M.Sc., M. Phil., MBA, MCA. After P.G. research work/ Ph. D.

Career : Eligible for various competitive examinations Mathematics is a compulsory part of most of the Competitive Examinations like SSC, NET, SET, PSC, UPSC [Govt. Job].

Academic profession : Teacher of schools, colleges and universities as well as job in various industries.

Microbiology

Introduced : 2001 (Gen.) 2001 (Hons.)

Medium : English / Bengali

Scope : Higher studies: Post Graduation like M.Sc., can study Biochemistry, Biotechnology, Biophysics, Molecular Biology and Genetics or Bioinformatics. After P.G. research work / M.Phil. / Ph. D.

Career: Eligible for various competitive examinations like NET, SET, PSC, UPSC, TIFR, IISER, IISc.

Academic profession : Assistant Professor in College, University, Medical College. Job in different food processing or health-drink industries, pharmaceutical industry, clinical laboratories and hospitals etc.

Statistics

Introduced : 2005 (Gen.)

Medium : English

Scope : Higher studies

Career: Eligible for various competitive examinations like SSC, NET, SET, PSC, UPSC [Govt. Job].

Academic profession : Teacher of school and colleges as well as job in Banking, IT, Quality Control etc.

Zoology

Introduced : 2002 (Gen.) 2009 (Hons.)

Medium : English / Bengali

Scope : Higher studies: Post Graduation like M.Sc. in Zoology and other specialised branches. After P.G. research work/ Ph.D.

Career: Eligible for various competitive examinations like SSC, NET, SET, PSC, UPSC [Govt. Job].

Academic profession : Teacher of School/ colleges as well as can opt for jobs in fishery, dairy, apiary, sericulture farm, poultry farm, pathological clinics, marketing and sales.

Placement & Career Guidance, Add on & Value Added Courses

Value Added & Certificate Courses

- Data Analysis & Visualization
- Computer Applications & IT Skills
- Basic Programming (Python / Java)
- PGDM in GIS & Remote Sensing
- Soft Skills & Personality Development
- Career-Oriented Training Programmes
- Digital Literacy & Communication Skills
- Hands on training in MS Excel, MS Word and Power Point



Financial Awareness Counselling Programme

The college organised a counselling programme titled “*Knowledge to Prosperity: My First Pay Cheque*” on 26th February, 2026 with the objective of creating financial awareness among students.

The session aimed to equip students with essential knowledge on managing their first earnings, including budgeting, saving, and responsible financial planning.

Sarsuna College Organises Placement Drive with Narayana International School

Sarsuna College successfully conducted a placement interview on 7th February, 2026 in collaboration with Narayana International School for the posts of Telecaller, Counsellor, and Public Relation Officer.

Job-Linked Employment and Entrepreneurship Programme (Under NSDC – Skill India Initiative) for Shedule Caste students

The college organised a *Job-Linked Employment and Entrepreneurship Programme* under the **Skill India Initiative of the National Skill Development Corporation (NSDC)** with the objective of enhancing students’ employability and fostering entrepreneurial skills on 19th March, 2026.

Seminar-cum-Mobilization Programme on free skill-based training programmes and placement opportunities.

A **Seminar-cum-Mobilization Programme** was organised on 19th March, 2026 in collaboration with **Tata STRIVE**, a skill development initiative under Tata Trusts, with the objective of creating awareness among students about **free skill-based training programmes and placement opportunities**.

Internship programme for the Academic Session 2026 -2027

The Internship programme will be conducted in three modes in this session-

- (a) Internship under an external organization/company
- (b) College resource-guided internship and
- (c) Internship through any external agency independently arranged by the student,

The Internship Programme shall be conducted strictly in accordance with the guidelines of the University of Calcutta, comprising a duration of minimum 10 days and a total of 60 hours of engagement for each student.

Field Work and Excursions

It is a part of knowledge and education. This college conducts such tours with an aim to increase the practical and field knowledge along with theoretical studies

- Department of Botany, Chemistry, Geography, Microbiology, Zoology, Bengali, History and Political Science conduct such educational tours.
- Participation in such academic excursion is mandatory.
- Students are not allowed to appear for their final C.U. examination without participation.
- Selection of place of such academic excursion is solely decided by the corresponding departments.

DEPARTMENT	PLACE	YEAR
Botany	Manali & Kasol	2025
Geography (PG)	Shillong	2025
Microbiology	Mandi	2025
Zoology	Gorumara National Park	2024
History	Jail Museum Alipore	2025
Political Science	Indian Museum	2025
Bengali	Murshidabad	2025



National Service Scheme (NSS)

Popularly known as NSS, the scheme was launched on the birth centenary of Mahatma Gandhi in 1969. Aimed at developing students' personality through community service, NSS is a voluntary association of young people at +2 level, Colleges, Universities and working for campus-community linkage.

The cardinal principle of the NSS programme is that it is organized by the students themselves, and both students and teachers through their combined participation in community service, get a sense of involvement in the tasks of nation building, NSS motto is NOT ME, BUT YOU.

Sarsuna College has started a National Service Scheme (NSS) Unit in the year 2013. The students of the college have successfully participated as volunteers in numerous social activities like:

- Survey of slum areas
- Setting up of medical centres
- Sanitation drives
- Adult education programmes for the weaker sections of the community
- Organizing campaigns for eradication of social evils
- Celebration of some social programmes as Rakhi, Swami Vivekananda Birthday, World Environment Day, World Water Day etc.
- Relief programmes [earthquake in Nepal, Flood in Tamilnadu]
- Tree plantation

The scheme will help the students to develop a sense of social and civic responsibility. They will also be awarded certificates of honour which will brighten their future prospects. National Service Scheme provides diversified opportunities to the students to develop their personality through community services. In future we hope to cover several aspects like adoption of villages for intensive development, various technical training programmes for self-help groups and rural youth.



Seminars, Workshops & Other Programmes

December 2025

- **December 20, 2025:** Sensitization programme on **Student Credit Card Scheme (SCCS)**, organized by the college administration.
- **December 23 & 24, 2025:** Orientation sessions for the add-on course "**Data Analytics using Power BI**," conducted by Dr. Chameli Mondal Pandit (Economics) and Dr. Sanjib Kumar Gupta (Statistics).

January 2026

Students' Week

- **January 2, 2026:** **Inaugural Programme** and Address by the Principal (Students' Welfare Sub-committee).
- **Awareness Session on Government Welfare Schemes (IQAC).**
- **Workshop on Professional Writing (CV, Email) (IQAC).**
- **January 3, 2026:** **Seminar on Power BI - A Step towards career growth (IQAC).**
- **January 4, 2026:** **Seminar on HIV Awareness (NSS Unit).**
- **January 6, 2026:** **Talk on Dementia Awareness (IQAC).**
- **January 7, 2026:** **Training on Women Safety and Stop Women Trafficking (NSS Unit).**

National Seminar

January 13, 2026: One Day National Seminar and Book Display "**All Work and All Play: Narrativising the Virtual**:" organised by **Department of English** and **IQAC**.

February 2026

- **February 28, 2026:** Celebration of **National Science Day 2026**, including an abstract-writing exercise and poster presentation on "Contribution of Women in Science," organized by the **Science Departments** in collaboration with **IQAC**.

March 2026

- **March 10, 2026:** One-day State-level Seminar titled "**Kolkata Through Time: Perspectives on the History of a City**," organized by the **Department of History** in collaboration with **IQAC**.
- **March 13, 2026:** **Women's Day Observance** to felicitate female alumni of outstanding achievement, organized by the **Women and Gender Development Cell**.
- **March 13, 2026:** One Day International Symposium "**Advances of Nuclear and Astroparticle Physics**" (Hybrid Mode) **Department of Physics**, Sarsuna College in collaboration with **IQAC** and Department of Physics, Vidyannagar College.
- **March 19, 2026:** **Seminar-cum-Mobilization Programme** regarding skill-based training and employment (Tata STRIVE initiative), organized by the college.
- **March 25, 2026:** International Interdisciplinary seminar on "**Energy Trade, Geopolitics – Need for Enhanced Energy Security and Self-Reliance**," organized by the **Department of Economics** with **IQAC**.

April 2026

- **April 10, 2026:** **Research Orientation Seminar** for Semester VI (Major) students, marking the official initiation of the college's **Silver Jubilee** celebration, organized by the **Research and Developmental Cell**.

May 2026

- **May 2, 2026 :** 'Aamar Bharat Amr Bharat' lecture by **Dr. Gopal Chandra Mandal**, organized by **Indian Knowledge System and Value Education Cell** and **IQAC** of Sarsuna College.
- **May 11, 2026 :** One day International Seminar on **Bioremediation and Microbial Social Networking : Bridging Technology and Science for a Better Earth**, Organized by **Department of Microbiology, IQAC & Research and Development Cell**

Co-curricular Activities

Sarsuna College organizes various co-curricular activities through out the year.

- Annual Cultural Competition and Talent Search (Inter college): song, dance, recitation, drama, drawing, postering, debate etc.
- Annual Prize Distribution (Academic & Cultural)
- Annual Sports (Indoor & Outdoor)
- Annual College Magazine (Darpan)
- Departmental Magazine/ Journal
- Celebration of many important festivals and ceremonies
- College Social
- Exhibitions
- Fresher's Welcome and Farewell
- Quiz and Debate Competitions
- Student-Teacher Cricket and Football Match
- Wall Magazine of different Departments

Apart from this interested and eligible students can participate in many Inter college District, State and National Level Championships of Cricket, Football, Chess, Carrom, Table tennis (sports) and in Vocal & Instrumental Music, Photography and Poster Competitions.



Disciplinary and Examination Norms

- Students must be present in their classes regularly and punctually. 75% attendance is essential according to C.U. Norms.
- A student will not be allowed to appear in the semester examination if his/her attendance is below 60% in that semester.
- Identity Card is must for every student to enter the college premises.
- Damaging college property such as walls, table, chairs, electrical goods, gardens, wash rooms, laboratories is punishable offence.
- Students should be polite, decent well-behaved and courteous and never show disrespect to any teachers, college staff, seniors. The must be well-mannered to fellow students.
- Any kind of misbehaviour within the college will be severely dealt with.
- Smoking, chewing tobacco or related items, drinking alcohol or taking drugs in the college premises- including canteen, common room, union room, play ground, garden is strictly prohibited and a punishable offence.
- Use of mobile phone, tab or any musical accessories in the class room, corridor or passages is unacceptable.
- Sarsuna College is under CCTV surveillance.
- Classrooms and Labs are only for educational purposes.
- Unethical behaviour can lead to severe punishment, even rustication.
- All students must be well-mannered and decently dressed in college.
- All students must follow the Notice Boards and college website for official communications
- Posters, Bills, Advertisements on the college wall and wall writings inside or outside the college is strictly forbidden.
- Students are directed not to linger in the class rooms, laboratories, corridors or passages in the college when they do not have any scheduled classes.
- Students must not enter the Principal's room, Professor's room, Office room without permission.
- Outsiders are not allowed inside the college premises without proper permission.
- Photography [camera / mobile] or taking selfie inside the college is strictly prohibited.
- Besides these every students must obey the rules and regulations of their corresponding departments.



Financial Assistance and Awards

- Poor and meritorious students, having regular attendance and good performance in the periodical and annual examinations are provided with financial assistance from students' welfare fund and students' aid fund and the fund of teachers' council.
- Scheduled Caste & Scheduled Tribe Scholarship/ Stipend is granted by the Director of Scheduled Caste & Scheduled Tribe welfare from the office of the special Officer, S.C. & S.T. welfare, New Treasury Building, Alipore, Calcutta-700027. Prescribed application forms are available from the College office after admission.
- Students who secure the highest marks in every Honours subject, B.A. (Gen), B.Sc. (Gen), B.Com. (Gen), in the final C.U. examination are awarded prize from the college.
- Certificates and prizes are awarded to students on the basis of their performance in various departmental affairs- Seminars, Wall-Magazine, Quiz or Debate, Annual Sports, and talent hunt Competitions.
- Debopriya Sengupta Memorial Scholarships is awarded by Smt Indira Sengupta in the memory of her son, to a college students securing highest marks in the computer Science Hons. in the C.U. examination from the college.
- Late Santosh Kumar Banerjee Memorial award donated by his younger son Dr. Dipendra Banerjee, is awarded to a student securing highest marks among the college students in English in the C.U. final examination.
- Late Anurupa Roy Chowdhury (mother of Sri Prabir ray Chowdhury and Pranay Roy Chowdhury) memorial award, is awarded to a student for securing highest marks in Microbiology in C.U. final examination among the college students.

Scholarship Portals for Students:-

- Swami Vivekananda Scholarship (SVMCM)
- SC,ST, OBC Scholarship (OASIS)
- Meritcum Men's Scholarship (for Minorities)
- Kanyashree Project
- Paramparik Scholarship
- Ananta Merit Scholarship
- GP Birla Scholarship=> <http://bit.ly/gpbirla>
- Priyamvada Birla Scholarship
- Jagadish Chandra Bose Scholarship
- Alo Scholarship
- Sitaram Jindal Scholarship
- KC Mahindra Scholarship
- FAEA Scholarship
- Maulana Azad National Scholarship
- This Time Atmadeep Young Scholarship
- Vidyasarathi MPCL Scholarship
- Indusland Bank Scholarship
- Asia Heart Foundation Scholarship
- Gaurav Foundation Scholarship
- Swami Dayanand Meritcom Men's Scholarship
- National Scholarship Portal
- Shikshashree Scholarship

Courses Offered Under NEP

UG Science

MAJOR

Biochemistry
Botany
Chemistry
Computer Science
Economics
Geography
Mathematics
Microbiology
Physics
Zoology

MINOR

Biochemistry
Botany
Chemistry
Computer Science
Economics
Electronics
Film Studies
Geography
Mathematics
Microbiology
Physics
Statistics
Zoology

Arts

MAJOR

Bengali
Education
English
History
Political Science

MINOR

Bengali
Economics
Education
English
Film Studies
History
Political Science

Commerce

Commerce

PG

Science

Computer Science
Geography

IMPORTANT INFORMATION REGARDING ADMISSION

- All admission procedures will be followed as per direction of higher education department. CSR number : CSR/04/23, CSR/05/23 and CSR/06/23 Dated 23/06/2023.
- Candidates whose IFSC Code or Bank Account Number is incorrect are required to mail details to the email i.d. of the college from registered email address.
- For any query regarding admission, you can contact the help line at 1800-102-8014 or e-mail or or call at the college help line number.

**The college reserves all right of admission. Submission of application form does not automatically make student eligible for admission to the college.

INTAKE CAPACITY OF HONOURS (4YEARS) SUBJECTS

INTAKE CAPACITY OF HONOURS & HONOURS WITH RESEARCH													
SUBJECT/COURSE	NON-PH						Ph						TOTAL
	UR	SC	ST	OBC-A	OBC-B	EWS	UR	SC	ST	OBC-A	OBC-B	EWS	
COMMERCE	132	64	18	29	21		29	7	31	1	1	1	293
BENGALI	40	20	5	9	6	9	2	1					89
BIOCHEMISTRY	22	11	3	5	3	5	1	1					49
BOTANY	19	9	3	4	3	4	1						42
CHEMISTRY	24	12	3	5	4	5	1						53
COMPUTER SCIENCE	22	11	3	5	3	5	1						49
ECONOMICS	19	9	3	4	3	4	1						42
EDUCATION	24	12	3	5	4	5	1						53
ENGLISH	33	17	5	8	5	8	2						76
GEOGRAPHY	38	19	5	9	6	9	2						86
HISTORY	33	17	5	8	5	8	2						76
MATHEMATICS	11	5	1	2	2	2	1						23
MICROBIOLOGY	24	12	3	5	4	5	1	1					53
PHYSICS	12	7	2	3	2	3	1						29
POLITICAL SCIENCE	33	17	5	8	5	8	2						76
ZOOLOGY	22	11	3	5	3	5	1						49

INTAKE CAPACITY OF MULTI DISCIPLINARY/3 YEAR COURSES													
SUBJECT/COURSE	NON-PH						Ph						TOTAL
	UR	SC	ST	OBC-A	OBC-B	EWS	UR	SC	ST	OBC-A	OBC-B	EWS	
B.A [MDC]	283	138	38	63	44	63	14	7	2	3	2	3	629
B.COM[MDC]	85	42	11	19	13	19	4	2	1	1	1	1	189
B.SC.[MDC]	85	42	11	19	13	19	4	2	1	1	1	1	189

Regular PG course offered in Computer Science and Geography under C.U. Affiliation. PG in Computer Science and Geography introduced in 2014.

COURSE	Subject Code	No. of Seat	Eligibility
M.Sc. Computer Science	CS	33	At least 50% marks in B.Sc. Computer Science [H] or equiv.
M.Sc. In Geography	GG	22	At least 50% marks in B.A./ B.Sc. Geography [H] or equiv.

Subject Combination

Four Year B.Sc. Honours Programmes Subject Combinations

BOTANY

Chemistry
Zoology

Microbiology
Zoology

Microbiology
Computer Science

Chemistry
Computer Science

Microbiology
Chemistry

Statistics
Computer Science

ZOOLOGY

Microbiology
Botany

Chemistry
Botany

Statistics
Botany

Microbiology
Statistics

Chemistry
Mathematics

Chemistry
Statistics

Chemistry
Computer Science

Statistics
Mathematics

Statistics
Computer science

BIOCHEMISTRY

Botany
Physics

Mathematics
Zoology

Statistics
Zoology

Microbiology
Physics

Microbiology
Statistics

MICROBIOLOGY

Botany
Chemistry

Zoology
Chemistry

Physics
Chemistry

Computer Science
Chemistry

Mathematics
Chemistry

PHYSICS

Mathematics
Chemistry

Mathematics
Computer Science

Mathematics
Electronics

Electronics
Chemistry

Mathematics
Microbiology

Microbiology
Chemistry

Microbiology
Electronics

GEOGRAPHY

Economics
Film Studies

Economics
Statistics

Botany
Zoology

Botany
Film Studies

Botany
Mathematics

Botany
Statistics

Zoology
Statistics

Zoology
Mathematics

MATHEMATICS

Physics
Chemistry

Physics
Computer Science

Physics
Statistics

Physics
Botany

Physics
Microbiology

Statistics
Computer Science

Microbiology
Computer Science

Electronics
Computer Science

CHEMISTRY

Mathematics
Physics

Zoology
Mathematics

Electronics
Physics

Botany
Zoology

Botany
Microbiology

Statistics
Computer Science

ECONOMICS

Statistics
Mathematics

COMPUTER SCIENCE

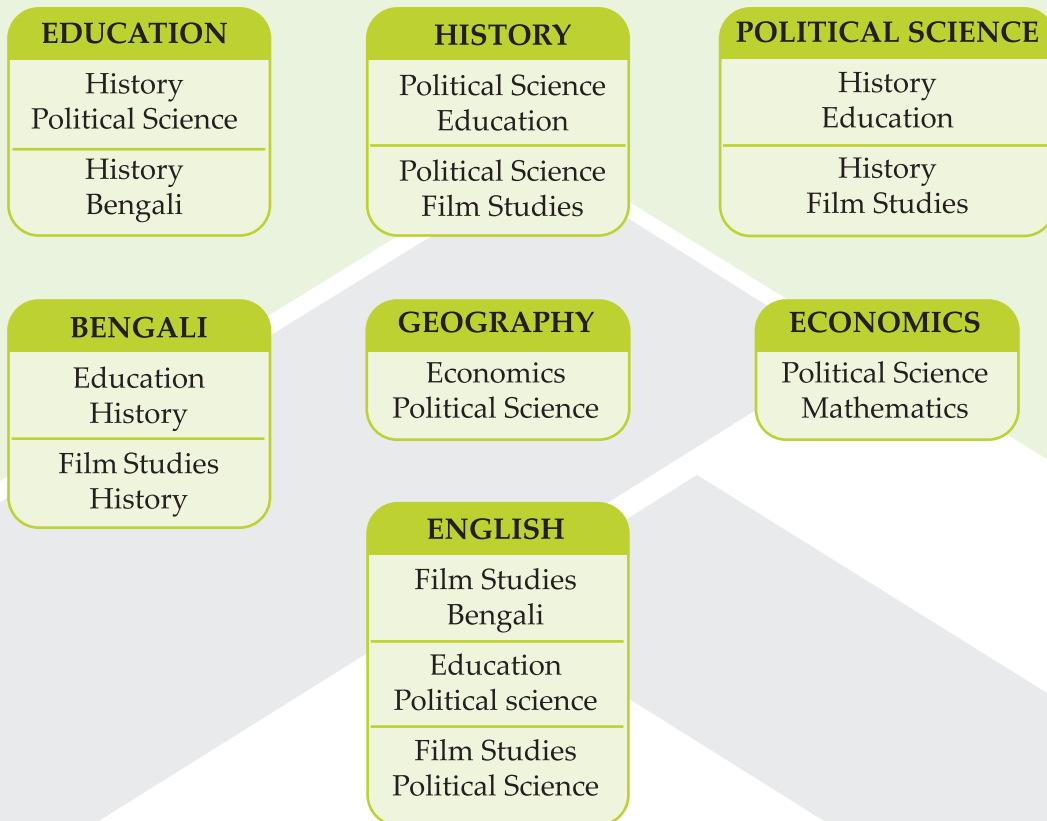
Physics
Mathematics

Statistics
Mathematics

Electronics
Mathematics

Subject Combination

Four Year B. A. Honours Programmes Subject Combinations



Four Year B. COM Honours Programmes Subject Combinations

COMMERCE

Fee Structure 2026 - 27

Four Year B. Sc. (Honours & Honours with Research)

Sl	Course Code	Major Subject	Minor 1	Minor 2	STREAM	TOTAL Admission Fees 1st SEM [™]	TOTAL Admission Fees 2nd SEM [™]	TOTAL Admission Fees 3rd SEM [™]	TOTAL Admission Fees 4th SEM [™]	TOTAL Admission Fees 5th SEM [™]	TOTAL Admission Fees 6th SEM [™]	TOTAL Admission Fees 7th SEM [™]	TOTAL Admission Fees 8th SEM [™]	Total Course Fees
1	1020319	BOTANY	CHEMISTRY	ZOOLOGY	4 YEAR B.SC	5565	5185	4945	5185	5695	5935	5945	6185	44640
2	1021619	BOTANY	MICROBIOLOGY	ZOOLOGY	4 YEAR B.SC	7215	6835	4945	5185	7345	7585	5945	6185	51240
3	1021607	BOTANY	MICROBIOLOGY	COMPUTER SC.	4 YEAR B.SC	7215	6835	6295	6535	8695	8935	5945	6185	56640
4	1020307	BOTANY	CHEMISTRY	COMPUTER SC.	4 YEAR B.SC	5565	5185	6295	6535	7045	7285	5945	6185	50040
5	1021603	BOTANY	MICROBIOLOGY	CHEMISTRY	4 YEAR B.SC	7215	6835	4945	5185	7345	7585	5945	6185	51240
6	1022707	BOTANY	STATISTICS	COMPUTER SC.	4 YEAR B.SC	4815	4435	6295	6535	6295	6535	5945	6185	47040
7	1031517	CHEMISTRY	MATHEMATICS	PHYSICS	4 YEAR B.SC	4815	4435	4695	4935	4695	4935	5945	6185	40640
8	1031915	CHEMISTRY	ZOOLOGY	MATHEMATICS	4 YEAR B.SC	5565	5185	4195	4435	4945	5185	5945	6185	41640
9	1031017	CHEMISTRY	ELECTRONICS	PHYSICS	4 YEAR B.SC	5315	4935	4695	4935	5195	5435	5945	6185	42640
10	1030219	CHEMISTRY	BOTANY	ZOOLOGY	4 YEAR B.SC	5315	4935	4945	5185	5445	5685	5945	6185	43640
11	1030216	CHEMISTRY	BOTANY	MICROBIOLOGY	4 YEAR B.SC	5315	4935	6595	6835	7095	7335	5945	6185	50240
12	1032707	CHEMISTRY	STATISTICS	COMPUTER SC.	4 YEAR B.SC	4815	4435	6295	6535	6295	6535	5945	6185	47040
13	1071715	COMPUTER SCIENCE	PHYSICS	MATHEMATICS	4 YEAR B.SC	8865	8485	7745	7985	8245	8485	9945	10185	69940
14	1072715	COMPUTER SCIENCE	STATISTICS	MATHEMATICS	4 YEAR B.SC	8365	7985	7745	7985	7745	7985	9945	10185	67940
15	1071015	COMPUTER SCIENCE	ELECTRONICS	MATHEMATICS	4 YEAR B.SC	8865	8485	7745	7985	8245	8485	9945	10185	69940
16	1082715	ECONOMICS	STATISTICS	MATHEMATICS	4 YEAR B.SC	3365	3185	2945	3185	2945	3185	3945	4185	26940
17	1081815	ECONOMICS	POLITICAL SCIENCE	MATHEMATICS	4 YEAR B.A.	3365	3185	2945	3185	2945	3185	3945	4185	26940
18	1130818	GEOGRAPHY	ECONOMICS	POL. SCIENCE	4 YEAR B.A.	5065	4685	4445	4685	4445	4685	5945	6185	40140
19	1130812	GEOGRAPHY	ECONOMICS	FILM STUDIES	4 YEAR B.SC	5065	4685	4945	5185	4945	5185	5945	6185	42140
20	1130827	GEOGRAPHY	ECONOMICS	STATISTICS	4 YEAR B.SC	5065	4685	4445	4685	4445	4685	5945	6185	40140
21	1130219	GEOGRAPHY	BOTANY	ZOOLOGY	4 YEAR B.SC	5565	5185	5195	5435	5695	5935	5945	6185	45140
22	1130212	GEOGRAPHY	BOTANY	FILM STUDIES	4 YEAR B.SC	5565	5185	4945	5185	5445	5685	5945	6185	44140
23	1130215	GEOGRAPHY	BOTANY	MATHEMATICS	4 YEAR B.SC	5565	5185	4445	4685	4945	5185	5945	6185	42140
24	1130227	GEOGRAPHY	BOTANY	STATISTICS	4 YEAR B.SC	5565	5185	4445	4685	4945	5185	5945	6185	42140
25	1131927	GEOGRAPHY	ZOOLOGY	STATISTICS	4 YEAR B.SC	5815	5435	4445	4685	5195	5435	5945	6185	43140
26	1131915	GEOGRAPHY	ZOOLOGY	MATHEMATICS	4 YEAR B.SC	5815	5435	4445	4685	5195	5435	5945	6185	43140
27	1151703	MATHEMATICS	PHYSICS	CHEMISTRY	4 YEAR B.SC	4065	3685	3695	3935	4195	4435	5445	5685	35140
28	1151707	MATHEMATICS	PHYSICS	COMPUTER SC	4 YEAR B.SC	4065	3685	5045	5285	5545	5785	5445	5685	40540
29	1151727	MATHEMATICS	PHYSICS	STATISTICS	4 YEAR B.SC	4065	3685	2945	3185	3445	3685	5445	5685	32140
30	1151702	MATHEMATICS	PHYSICS	BOTANY	4 YEAR B.SC	4065	3685	3445	3685	3945	4185	5445	5685	34140
31	1151716	MATHEMATICS	PHYSICS	MICROBIOLOGY	4 YEAR B.SC	4065	3685	5345	5585	5845	6085	5445	5685	41740
32	1152707	MATHEMATICS	STATISTICS	COMPUTER SC.	4 YEAR B.SC	3565	3185	5045	5285	5045	5285	5445	5685	38540
33	1151607	MATHEMATICS	MICROBIOLOGY	COMPUTER SC.	4 YEAR B.SC	5965	5585	5045	5285	7445	7685	5445	5685	48140
34	1151007	MATHEMATICS	ELECTRONICS	COMPUTER SC.	4 YEAR B.SC	4065	3685	5045	5285	5545	5785	5445	5685	40540
35	1160203	MICROBIOLOGY	BOTANY	CHEMISTRY	4 YEAR B.SC	10065	9685	9695	9935	10195	10435	11145	11385	82540
36	1161903	MICROBIOLOGY	ZOOLOGY	CHEMISTRY	4 YEAR B.SC	10315	9935	9695	9935	10445	10685	11145	11385	83540
37	1161703	MICROBIOLOGY	PHYSICS	CHEMISTRY	4 YEAR B.SC	10565	10185	9695	9935	10195	10435	11145	11385	83540
38	1160703	MICROBIOLOGY	COMPUTER SC.	CHEMISTRY	4 YEAR B.SC	11665	11285	9695	9935	11795	12035	11145	11385	88940
39	1161503	MICROBIOLOGY	MATHEMATICS	CHEMISTRY	4 YEAR B.SC	9565	9185	9695	9935	9695	9935	11145	11385	80540
40	1171503	PHYSICS	MATHEMATICS	CHEMISTRY	4 YEAR B.SC	4815	4435	4945	5185	4945	5185	5945	6185	41640
41	1171507	PHYSICS	MATHEMATICS	COMPUTER SC	4 YEAR B.SC	4815	4435	6295	6535	6295	6535	5945	6185	47040
42	1171510	PHYSICS	MATHEMATICS	ELECTRONICS	4 YEAR B.SC	4815	4435	4695	4935	4695	4935	5945	6185	40640
43	1171003	PHYSICS	ELECTRONICS	CHEMISTRY	4 YEAR B.SC	5315	4935	4945	5185	5445	5685	5945	6185	43640
44	1171516	PHYSICS	MATHEMATICS	MICROBIOLOGY	4 YEAR B.SC	4815	4435	6595	6835	6595	6835	5945	6185	48240
45	1171603	PHYSICS	MICROBIOLOGY	CHEMISTRY	4 YEAR B.SC	4815	4435	4945	5185	7345	7585	5945	6185	46440
46	1171610	PHYSICS	MICROBIOLOGY	ELECTRONICS	4 YEAR B.SC	7215	6835	4695	4935	7095	7335	5945	6185	50240
47	1260217	BIOCHEMISTRY	BOTANY	PHYSICS	4 YEAR B.SC	10065	9685	9445	9685	9945	10185	11145	11385	81540
48	1261519	BIOCHEMISTRY	MATHEMATICS	ZOOLOGY	4 YEAR B.SC	9565	9185	9695	9935	9695	9935	11145	11385	80540
49	1262719	BIOCHEMISTRY	STATISTICS	ZOOLOGY	4 YEAR B.SC	9565	9185	9695	9935	9695	9935	11145	11385	80540
50	1261617	BIOCHEMISTRY	MICROBIOLOGY	PHYSICS	4 YEAR B.SC	11965	11585	9445	9685	11845	12085	11145	11385	89140
51	1261627	BIOCHEMISTRY	MICROBIOLOGY	STATISTICS	4 YEAR B.SC	11965	11585	8945	9185	11345	11585	11145	11385	87140
52	1191602	ZOOLOGY	MICROBIOLOGY	BOTANY	4 YEAR B.SC	7215	6835	4695	4935	7095	7335	5945	6185	50240
53	1190302	ZOOLOGY	CHEMISTRY	BOTANY	4 YEAR B.SC	5565	5185	4695	4935	5445	5685	5945	6185	43640
54	1192702	ZOOLOGY	STATISTICS	BOTANY	4 YEAR B.SC	4815	4435	4695	4935	4695	4935	5945	6185	40640
55	1191627	ZOOLOGY	MICROBIOLOGY	STATISTICS	4 YEAR B.SC	7215	6835	4195	4435	6595	6835	5945	6185	48240
56	1190315	ZOOLOGY	CHEMISTRY	MATHEMATICS	4 YEAR B.SC	5565	5185	4195	4435	4945	5185	5945	6185	41640
57	1190327	ZOOLOGY	CHEMISTRY	STATISTICS	4 YEAR B.SC	5565	5185	4195	4435	4945	5185	5945	6185	41640
58	1190307	ZOOLOGY	CHEMISTRY	COMPUTER SC.	4 YEAR B.SC	5565	5185	6295	6535	7045	7285	5945	6185	50040
59	1192715	ZOOLOGY	STATISTICS	MATHEMATICS	4 YEAR B.SC	4815	4435	4195	4435	4195	4435	5945	6185	38640
60	1192707	ZOOLOGY	STATISTICS	COMPUTER SC	4 YEAR B.SC	4815	4435	6295	6535	6295	6535	5945	6185	47040

Four Year BA (Honours & Honours with Research)

Sl	Course Code	Major Subject	Minor 1	Minor 2	STREAM	TOTAL Admission Fees 1st SEM"	TOTAL Admission Fees 2nd SEM"	TOTAL Admission Fees 3rd SEM"	TOTAL Admission Fees 4th SEM"	TOTAL Admission Fees 5th SEM"	TOTAL Admission Fees 6th SEM"	TOTAL Admission Fees 7th SEM"	TOTAL Admission Fees 8th SEM"	Total Course Fees
61	1091418	EDUCATION	HISTORY	POL. SCIENCE	4 YEAR B.A	3155	2975	2735	2975	2735	2975	3735	3975	25260
62	1091423	EDUCATION	HISTORY	BENGALI	4 YEAR B.A	3155	2975	2735	2975	2735	2975	3735	3975	25260
63	1141809	HISTORY	POL. SCIENCE	EDUCATION	4 YEAR B.A	3155	2975	2735	2975	2735	2975	3735	3975	25260
64	1141812	HISTORY	POL. SCIENCE	FILM STUDIES	4 YEAR B.A	3355	2975	3235	3475	3235	3475	3735	3975	27460
65	1221223	ENGLISH	FILM STUDIES	BENGALI	4 YEAR B.A	3855	3475	2735	2975	3235	3475	3735	3975	27460
66	1181409	POL. SCIENCE	HISTORY	EDUCATION	4 YEAR B.A	3155	2975	2735	2975	2735	2975	3735	3975	25260
67	1181412	POL. SCIENCE	HISTORY	FILM STUDIES	4 YEAR B.A	3355	2975	3235	3475	3235	3475	3735	3975	27460
68	1220918	ENGLISH	EDUCATION	POL. SCIENCE	4 YEAR B.A	3155	2975	2735	2975	2735	2975	3735	3975	25260
69	1221218	ENGLISH	FILM STUDIES	POL. SCIENCE	4 YEAR B.A	3855	3475	2735	2975	3235	3475	3735	3975	27460
70	1230914	BENGALI	EDUCATION	HISTORY	4 YEAR B.A	3155	2975	2735	2975	2735	2975	3735	3975	25260
71	1231214	BENGALI	FILM STUDIES	HISTORY	4 YEAR B.A	3855	3475	2735	2975	3235	3475	3735	3975	27460

Four Year B.Com (Honours & Honours with Research)

Sl	Course Code	Major Subject	STREAM	TOTAL Admission Fees 1st SEM"	TOTAL Admission Fees 2nd SEM"	TOTAL Admission Fees 3rd SEM"	TOTAL Admission Fees 4th SEM"	TOTAL Admission Fees 5th SEM"	TOTAL Admission Fees 6th SEM"	TOTAL Admission Fees 7th SEM"	TOTAL Admission Fees 8th SEM"	Total Course Fees
72	1000405	COMMERCE	4 YEAR B.COM	3415	3435	3195	3035	2795	3035	3795	4035	26740

Three Year B.Sc. (MDC)

Sl	Course Code	Core 1	Core 2	Minor	STREAM	TOTAL Admission Fees 1st SEM"	TOTAL Admission Fees 2nd SEM"	TOTAL Admission Fees 3rd SEM"	TOTAL Admission Fees 4th SEM"	TOTAL Admission Fees 5th SEM"	TOTAL Admission Fees 6th SEM"	TOTAL Admission Fees 7th SEM"	TOTAL Admission Fees 8th SEM"	Total Course Fees
73	O20319	BOTANY	CHEMISTRY	ZOOLOGY	3 YEAR B.SC	4665	4285	4795	5035	4795	5035	0	0	28610
74	O021619	BOTANY	MICROBIOLOGY	ZOOLOGY	3 YEAR B.SC	6315	5935	6445	6685	6445	6685	0	0	38510
75	O021607	BOTANY	MICROBIOLOGY	COMPUTER SC.	3 YEAR B.SC	6315	5935	7795	8035	7795	8035	0	0	43910
76	O020307	BOTANY	CHEMISTRY	COMPUTER SC.	3 YEAR B.SC	4665	4285	6145	6385	6145	6385	0	0	34010
77	O031517	CHEMISTRY	MATHEMATICS	PHYSICS	3 YEAR B.SC	4165	3785	4045	4285	4045	4285	0	0	24610
78	O030216	CHEMISTRY	BOTANY	MICROBIOLOGY	3 YEAR B.SC	4665	4285	6445	6685	6445	6685	0	0	35210
79	O071715	COMPUTER SCIENCE	PHYSICS	MATHEMATICS	3 YEAR B.SC	6015	5635	5395	5635	5395	5635	0	0	33710
80	O072715	COMPUTER SCIENCE	STATISTICS	MATHEMATICS	3 YEAR B.SC	5515	5135	4895	5135	4895	5135	0	0	30710
81	O071015	COMPUTER SCIENCE	ELECTRONICS	MATHEMATICS	3 YEAR B.SC	6015	5635	5395	5635	5395	5635	0	0	33710
82	O130818	GEOGRAPHY	ECONOMICS	POL. SCIENCE	3 YEAR B.SC	4165	3785	3545	3785	3545	3785	0	0	22610
83	O130812	GEOGRAPHY	ECONOMICS	FILM STUDIES	3 YEAR B.SC	4165	3785	4045	4285	4045	4285	0	0	24610
84	O130823	GEOGRAPHY	ECONOMICS	BENGALI	3 YEAR B.SC	4165	3785	3545	3785	3545	3785	0	0	22610
85	O131223	GEOGRAPHY	FILM STUDIES	BENGALI	3 YEAR B.SC	4665	4285	4045	4285	4045	4285	0	0	25610
86	O130219	GEOGRAPHY	BOTANY	ZOOLOGY	3 YEAR B.SC	4665	4285	4795	5035	4795	5035	0	0	28610
87	O130227	GEOGRAPHY	BOTANY	STATISTICS	3 YEAR B.SC	4665	4285	4045	4285	4045	4285	0	0	25610
88	O131927	GEOGRAPHY	ZOOLOGY	STATISTICS	3 YEAR B.SC	4915	4535	4295	4535	4295	4535	0	0	27110
89	O151707	MATHEMATICS	PHYSICS	COMPUTER SC	3 YEAR B.SC	3915	3535	5395	5635	5395	5635	0	0	29510
90	O151727	MATHEMATICS	PHYSICS	STATISTICS	3 YEAR B.SC	3915	3535	3295	3535	3295	3535	0	0	21110
91	O151702	MATHEMATICS	PHYSICS	BOTANY	3 YEAR B.SC	3915	3535	3795	4035	3795	4035	0	0	23110
92	O152707	MATHEMATICS	STATISTICS	COMPUTER SC.	3 YEAR B.SC	3415	3035	4895	5135	4895	5135	0	0	26510
93	O160203	MICROBIOLOGY	BOTANY	CHEMISTRY	3 YEAR B.SC	6315	5935	6445	6685	6445	6685	0	0	38510
94	O161903	MICROBIOLOGY	ZOOLOGY	CHEMISTRY	3 YEAR B.SC	6565	6185	6695	6935	6695	6935	0	0	40010
95	O161703	MICROBIOLOGY	PHYSICS	CHEMISTRY	3 YEAR B.SC	6315	5935	6445	6685	6445	6685	0	0	38510
96	O160703	MICROBIOLOGY	COMPUTER SC.	CHEMISTRY	3 YEAR B.SC	7915	7535	8045	8285	8045	8285	0	0	48110
97	O162703	MICROBIOLOGY	STATISTICS	CHEMISTRY	3 YEAR B.SC	5815	5435	5945	6185	5945	6185	0	0	35510
98	O171003	PHYSICS	ELECTRONICS	CHEMISTRY	3 YEAR B.SC	4415	4035	4545	4785	4545	4785	0	0	27110
99	O192702	ZOOLOGY	STATISTICS	BOTANY	3 YEAR B.SC	4165	3785	4045	4285	4045	4285	0	0	24610

Three Year B.A. (MDC)

Sl	Course Code	Core 1	Core 2	Minor	STREAM	TOTAL Admission Fees 1st SEM"	TOTAL Admission Fees 2nd SEM"	TOTAL Admission Fees 3rd SEM"	TOTAL Admission Fees 4th SEM"	TOTAL Admission Fees 5th SEM"	TOTAL Admission Fees 6th SEM"	TOTAL Admission Fees 7th SEM"	TOTAL Admission Fees 8th SEM"	Total Course Fees
100	231409	BENGALI	HISTORY	EDUCATION	3 YEAR B.A	3005	2825	2585	2825	2585	2825	0	0	16650
101	230922	BENGALI	EDUCATION	ENGLISH	3 YEAR B.A	3005	2825	2585	2825	2585	2825	0	0	16650
102	231222	BENGALI	FILM STUDIES	ENGLISH	3 YEAR B.A	3705	3325	3085	3325	3085	3325	0	0	19850
103	180814	POL. SCIENCE	ECONOMICS	HISTORY	3 YEAR B.A	3005	2825	2585	2825	2585	2825	0	0	16650
104	180914	POL. SCIENCE	EDUCATION	HISTORY	3 YEAR B.A	3005	2825	2585	2825	2585	2825	0	0	16650
105	181214	POL. SCIENCE	FILM STUDIES	HISTORY	3 YEAR B.A	3705	3325	3085	3325	3085	3325	0	0	19850

Three Year B.Com (MDC)

Sl	Course Code	Major Subject	STREAM	TOTAL Admission Fees 1st SEM"	TOTAL Admission Fees 2nd SEM"	TOTAL Admission Fees 3rd SEM"	TOTAL Admission Fees 4th SEM"	TOTAL Admission Fees 5th SEM"	TOTAL Admission Fees 6th SEM"	TOTAL Admission Fees 7th SEM"	TOTAL Admission Fees 8th SEM"	Total Course Fees
106	40506	COMMERCE	3 YEAR B.COM	3205	3225	2985	2825	2585	2825	0	0	17650

PG Fee Structure

Fee Structure for M.Sc. Geography

	Sem I	Sem II	Sem III	Sem IV
Admission Fee (One time)	1500	0	0	0
Registration Fee	0	0	0	0
Tuition Fee (for 6 months)	1800	1800	3000	3000
Laboratory Fee	3765	3500	5000	5000
Exam Fee	500	500	1000	1000
Development Fee	4000	5000	6500	7500
Library Fee	2000	1000	1000	1200
Security Deposit (One time)	1400	0	0	0
Excursion Deposit	To be decided as per discretion of the Department before conduction of the excursion (Tentative within Rs 15000/- per candidate)			
Cyber fees	700	500	500	500
Electricity fees	600	500	500	500
Festival charge	30	0	30	0
Magazine	50	0	50	0
College sports and games	45	0	45	0
Acknowledgement card	15	0	15	0
Identity card	50	0	0	0
University sports and games	60	0	0	0
Students welfare fund	200	0	0	0
“Crash course/short term course seminar fee and workshop”	600	0	1200	2250
IT Processing Fee	150	0	150	0
Total	17465	12800	18990	20950
GRAND TOTAL				70,205

Fee Structure for M.Sc. Computer Science Course

	Sem I	Sem II	Sem III	Sem IV
Admission Fee (One time)	2000	0	0	0
Tuition Fee (for 6 months)	3000	3000	3000	3000
Laboratory Fee	6000	6000	6000	6000
Exam Fee	300	300	300	300
Development Fee	6000	6000	6000	6000
Library Fee	1000	1000	1000	1000
Security Deposit	1000	1000	1000	1000
Cyber fees	700	1000	1000	1000
Electricity fees	300	300	300	300
Festival charge	30	0	30	0
Magazine	50	0	50	0
College sports and games	45	0	45	0
Acknowledgement card	15	0	15	0
Identity card	50	0	0	0
University sports and games	60	0	0	0
Students welfare fund	200	0	0	0
“Crash course/short term course /seminar fee and workshop”	2000	3000	2500	2800
IT Processing Fee	150	0	150	0
Total	22900	21600	21390	21400
GRAND TOTAL				87,290

Academic Calendar 2026 - 27

JULY 2026	
1 st Week	Commencement of 7 th Semester Class
9 Jul	Students' Seminar — Electronics Dept.
11 Jul	World Population Day — Economics & Geography, Seminar — Geography
14-15 Jul	Students' Seminar — Economics Dept.
24 Jul	Income Tax Day Celebration- Commerce
29 Jul	Departmental Presentation — Bengali Dept.
Last Week	Class Tests — 2 nd Sem; Algae Excursion; Visit to Palaeobotanical Institute — Botany
Other	Career Guidance & Placement Programme

AUGUST 2026	
1 Aug	Classes Commence — 1 st , 3 rd & 5 th Semesters
2 Aug	P.C. Ray Birth Anniversary — Chemistry & Biochemistry
8 Aug	Rabindra Smaran (Baishe Shraban) — Bengali Dept.
14 Aug	Inauguration of Wall Magazine — History Dept.
15 Aug	Independence Day Celebration
19 Aug	World Photography Day — Inter/Intra-College Competition-Film Study
27 Aug	World Lake Day — Geography, Zoology & NSS
Other	Freshers' Welcome, Orientation; Sem 7 Class Tests; Plant Diversity Excursion — Botany; Seminar — Comp. Sc., Examination of 2 nd and 4 th semesters

SEPTEMBER 2026	
1 Sep	Classes Commence — 3 rd Semester and 5 th Semester
5 Sep	Teachers' Day Celebration
7 Sep	National Cinema Day — Film Study Dept.
8 Sep	World Literacy Day — Education Dept.
15 Sep	Microorganism Day — Microbiology Dept.
21 Sep	World Peace Day Celebration
24 Sep	NSS Day Celebration
26 Sep	Vidyasagar Birth Anniversary — Bengali Dept.
28 Sep	World Rivers Day — Geography & Eco Club
Other	Parent-Teacher Meeting, Seminars — Statistics, Physics, Pol. Sc.; Botanical Garden Excursion; Value-Added Courses Commence

OCTOBER 2026	
1 st Week	Extension Lecture — English; Seminar — Economics
6 Oct	Meghnad Saha Day — Biochemistry Dept.
12 Oct	Columbus Day — History Dept.
15 Oct	Dr. A.P.J. Abdul Kalam's Day Celebration
Last Week	Annual Cultural Week (Pre-Puja)

NOVEMBER 2026	
5 Nov	J.B.S. Haldane Day — Biochemistry Dept.
10 Nov	International Accounting Day — Commerce; National Education Day — Education Dept.
11 Nov	Veterans' Day & Education Day Celebration
16 Nov	National Press Day — Film Study Dept.
18-24 Nov	GIS Week — Geography Dept.
28-30 Nov	Educational Excursion — Bengali Dept.
30 Nov	J.C. Bose Day — Biochemistry Dept.
Other	Class Tests — Sem 5 & 6; Microbiology Excursion; Tissue Culture Excursion — Botany; Career Guidance Programme

DECEMBER 2026	
10 Dec	Human Rights Day — Political Science Dept.
13 Dec	Disaster Risk Reduction Day — Geography Seminar
16 Dec	Wall Magazine 'Kautilya' Published — Economics
18 Dec	Alumni Meet — History Dept.
18-24 Dec	GIS Week — Geography Dept.
22 Dec	Mathematics Day; Departmental Presentation — Bengali
Other	National Seminar, Wall Magazine 'Minerva' — English; Students' Sports; Phyto-geographical Excursion — Botany, exam of 5 th and 7 th Sem

JANUARY 2027	
First Week	Parent-Teacher Meeting
12 Jan	National Youth Day (Vivekananda Jayanti)
23 Jan	Netaji Subhas Chandra Bose Jayanti
26 Jan	Republic Day Celebration
Other	5 th Sem Examination; Educational Excursion — History Dept.

FEBRUARY 2027	
21 Feb	Matribhasha Diwas — Bengali Dept.; Wall Magazine Published
25-26 Feb	Science Day Celebration
Other	3 rd & 1 st Sem Examinations; Seminar — Statistics; Students' Seminar — Mathematics, commencement of 8 th Semester

MARCH 2027	
1 st Week	2 nd Extension Lecture — English; Classes Commence — 2 nd & 4 th Semesters
3 Mar	World Wildlife Day
8 Mar	International Women's Day Celebration
20 Mar	International Day of Happiness — Economics Dept.
22 Mar	World Water Day
Other	Departmental Seminar — History; Field Visit — Bengali Dept. (28-30 Mar)

APRIL 2027	
7 Apr	World Health Day
16 Apr	International Documentary Day — Photography Seminar
19 Apr	Barshaban Utsav — Bengali Dept.
20 Apr	World Heritage Day — History Dept.
22 Apr	Earth Day Celebration
23 Apr	Shakespeare's Birthday Celebration
Other	Career Guidance & Placement Programme

MAY 2027	
During Month	Rabindra Jayanti Celebration
11 May	National Technology Day Celebration
20-21 May	World Day for Cultural Diversity — English Dept. & Students' Seminar
22 May	International Day for Biological Diversity
25 May	Nazrul Diwas — Bengali Dept.
28 May	World Hunger Day
Other	Students' Seminar — Botany Dept.; Summer Internship

JUNE 2027	
5 Jun	World Environment Day — Geography Dept. & NSS
21 Jun	International Yoga Day Celebration
26 Jun	Bankim Chandra Chattopadhyay's Birth Anniversary; Anti-Drug Day — Geography & NSS
29 Jun	Statistics Day — Statistics Dept.

List of Holidays for 2026

January

- 1 Jan (Thursday) – New Year's Day
- 12 Jan (Monday) – Swami Vivekananda's Birthday
- 22 Jan (Thursday) – Day before Saraswati Puja
- 23 Jan (Friday) – Netaji's Birthday/ Saraswati Puja
- 24 Jan (Saturday) – University Foundation Day
- 26 Jan (Monday) – Republic Day

February

- 4 Feb (Wednesday) – Shab-e-Barat
- 14 Feb (Saturday) – Panchanan Barma's Birthday
- 16 Feb (Sunday) – Maha Shivaratri

March

- 3 Mar (Tuesday) – Doljatra
- 4 Mar (Wednesday) – Holi (Day after Doljatra)
- 17 Mar (Thu) – Birthday of Shri Shri Harichand Thakur
- 20 Mar (Friday) – Day before Id-ul-Fitr
- 21 Mar (Saturday) – Eid-ul-Fitr
- 26 Mar (Thursday) – Ram Navami
- 31 Mar (Tuesday) – Mahavir Jayanti

April

- 3 Apr (Friday) – Good Friday
- 14 Apr (Tue) – Dr. B.R. Ambedkar Jayanti
- 15 Apr (Wednesday) – Bengali New Year

May

- 1 May (Friday) – May Day / Buddha Purnima / & Birthday of Pandit Raghunath Murmu
- 9 May (Saturday) – Rabindra Jayanti
- 26 May (Tuesday) – Day before Eid-ud-zoha
- 27 May (Wednesday) – Eid-ud-zoha (Bakrid)

June

- 26 Jun (Friday) – Muharram
- 29 Jun (Monday) – Sir Asutosh Day

July

- 16 July (Thursday) – Ratha Yatra

List of Holidays for 2026

August

- | | | |
|--------------------|---|-------------------|
| 15 Aug (Saturday) | – | Independence Day |
| 26 Aug (Wednesday) | – | Fateha-dwaz-daham |
| 28 Aug (Friday) | – | Rakhi Bandhan |

September

- | | | |
|-------------------|---|-----------------|
| 4 Sep (Friday) | – | Janmasthanmi |
| 17 Sep (Thursday) | – | Viswakarma Puja |

October

- | | | |
|-----------------------|---|---------------------------------|
| 2 Oct (Friday) | – | Gandhi Birthday |
| 10 Oct (Saturday) | – | Mahalaya |
| 15 - 21 Oct (Thu-Wed) | – | Durga Puja |
| 22 - 24 Oct (Thu-Sat) | – | Additional day for durga Puja |
| 25 Oct (Sunday) | – | Lakshmi Puja |
| 26 Oct (Monday) | – | Additional day for Lakshmi Puja |

November

- | | | |
|----------------------|---|--|
| 8 Nov (Sunday) | – | Kali Puja |
| 9 - 10 Nov (Mon-Tue) | – | Additional days for Kali Puja |
| 11 Nov (Wednesday) | – | Bhratri Dwitiya |
| 12 Nov (Thursday) | – | Day after Bhratri Dwitiya |
| 15 Nov (Sunday) | – | Chhat Puja/ Birthday of Birsa Munda |
| 15 Nov (Monday) | – | Additional Day for Chhat Puja |
| 24 Nov (Tuesday) | – | Birth Day of Guru Nanak / Parshwanath's Ratha Jata |

December

- | | | |
|-----------------|---|---------------|
| 25 Dec (Friday) | – | Christmas Day |
|-----------------|---|---------------|

Karam Puja (to be notified later)

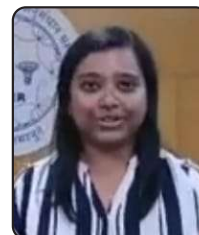
N.B. : If there is any change in the date of Id-Ul-Fitr, Id-Ud-Zoha, Muharram, Fateha-Dwaz-Daham, Shabe Barat depending upon the sighting of the moon, holiday will be declared by a separate order for the date on which the festival would be actually observed in lieu of the date originally notified as holiday for these festivals

In accordance with University of Calcutta Holiday List 2026

Alumni Speak

"My time at Sarsuna College was the definitive chapter of my academic journey. Beyond being a premier center of learning, it served as a second home—a sanctuary that nurtured my ambitions and fortified my resilience. From my undergraduate roots to completing my Master's and now pursuing a PhD at NISER, every milestone I reach is a testament to the rigorous foundation and unwavering support I received here."

Jayati Ghosh PhD (Pursuing) NISER , Bhubaneswar

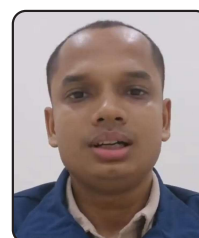


"I have had the privilege to study in this wonderful department with a superb academic environment, a library with a huge ensemble of books, excellent faculty as well as laboratory facility that inculcated in me a quest for knowledge and thirst for research. This institution has not only helped me to grow as an educator but has also embedded in me a strong sense of creativity along with cultural attributes."

Dr. Lopamudra Choudhury Faculty, Department of Microbiology, Sarsuna College

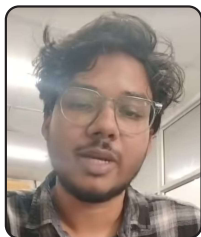
"I am very lucky that I had such great faculties. The individual practicals in organic, inorganic, and physical chemistry give you very good confidence as a student. If you are looking for a better opportunity and a good future, I definitely recommend coming to Sarsuna College to get a better experience. It is a great college that provides the basic technical knowledge needed to succeed even in global sales and project management roles."

Mr. Manobendra Bhattacharya Sales and Project Department, WW Plastics and Polymer (Gomaki Group of Companies), Singapore



"The Chemistry Department at Sarsuna College is a really memorable place for me. The laboratory conditions—inorganic, organic, and physical—are excellent. The infrastructure is enormously enriched with equipment like spectrophotometers, pH meters, and colorimeters. The faculty and cooperative lab assistants supported me in so many ways, and this environment truly boosted me to grow in my career."

Mr. Rajdeep Mal R&D Section, Aditya Birla Group



"The laboratory support the college gave was enough for our B.Sc.; we didn't need any external or private lab support to work efficiently. The teachers and staff are very cooperative, and the infrastructure is great. This solid foundation in lab work was very helpful for my Master's at NIT and my current research work in development and metal extraction."

Mr. Biswajit Moitra Project Assistant, CSIR-National Metallurgical Laboratory (NML)

"The professors helped me a lot, constantly motivating me and providing exposure to IITs and research institutes, which shaped my career. Most importantly, the laboratory facilities were excellent; with a focused student intake, I was able to perform every experiment on my own. This hands-on experience and the guidance I received helped me qualify for JAM and eventually publish my research in renowned journals like JACS."

Mr. Snehasish Muni PhD Student (Computational Chemistry), IIT Mandi

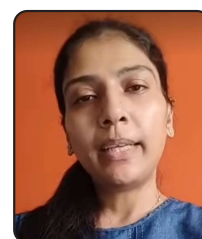


"I was in the first batch of economics at Sarsuna College. At that time, there was no dedicated library, but with the help of our friends and supportive teachers, we built our first economics library ourselves. The college ambiance and supportive environment—especially guidance from teachers like PLM—helped me significantly in building my personal growth and academic career, leading me to a successful 15-year journey in the print media industry."

Mr. Debashis Gain Senior Professional, Print Media Industry (formerly with ABP and Bartaman Private Limited)

"My time in Sarsuna College was truly memorable. The guidance I got from all the professors and the supportive environment has helped shape my career and confidence. I am very proud to be an alumna of this institution and I will always cherish the values and the knowledge I gained here."

Ms. Ragashree Banerjee Senior Data Analyst, Accenture



"Hi, my name is Debomit Banerjee, I'm a writer and filmmaker. My days at Sarsuna College remain my fondest memories. The friends I made, the fun we had, and the relationships we formed with both the teaching and non-teaching faculties, which have only grown over the years. Sarsuna College taught me not just what was part of the curriculum but also about life, gave me lifelong friends, and created an extended family that I will cherish forever."

Debomit Banerjee, Filmmaker



Published by : Dr. Gopal Chandra Mandal, Principal
Printed at : The AI-Graph, Behala Chowrasta



we are in google map

 4/HB/A, Ho Chi Minh Sarani, Kolkata - 700 061

 sarsuna.college@rediffmail.com

 www.sarsunacollege.ac.in

 033 2452 3699, 4104