

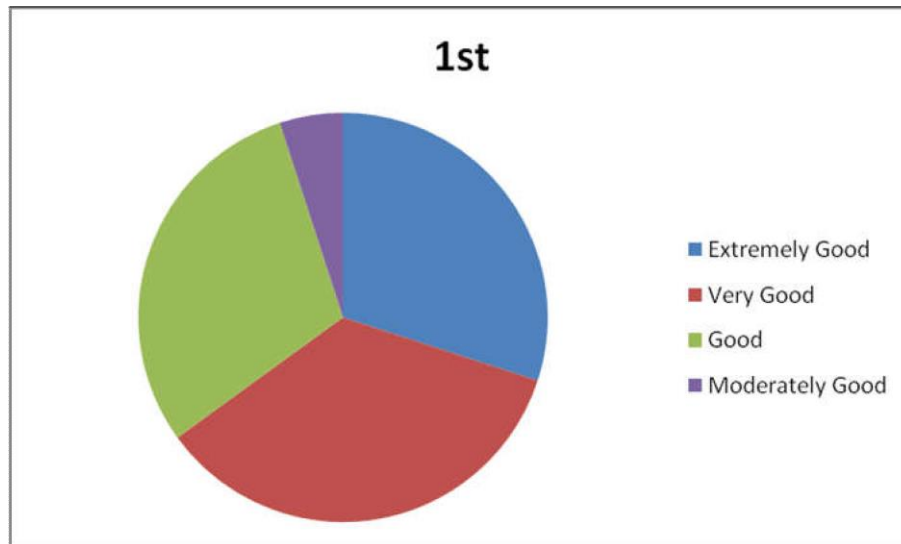
Feedback Analysis

Student's Feedback

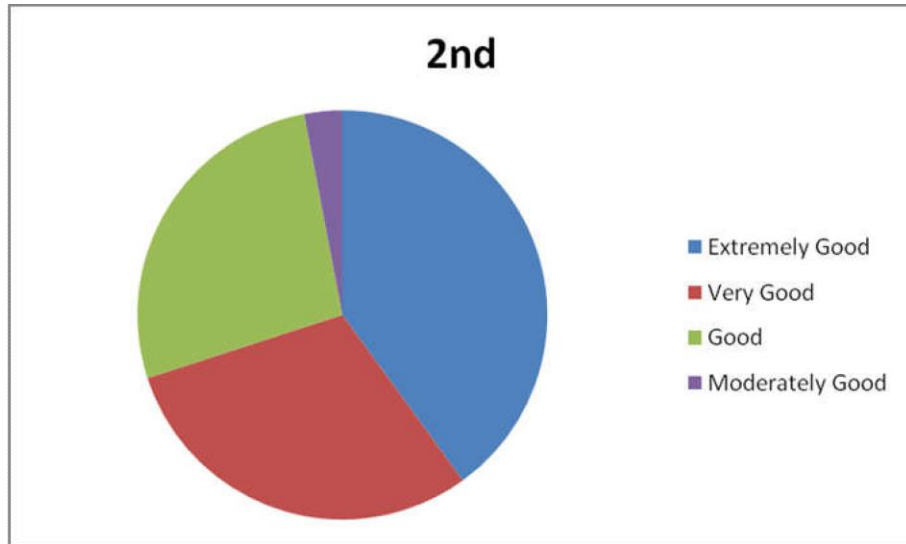
We have collected feedback from each department. However, here we only present the report considering all departments together. At the end of the feedback we have calculated a summary measure 'satisfaction Score' [range 0 (worst) to 100 (highest)] on the basis of overall response.

Questionnaire-1

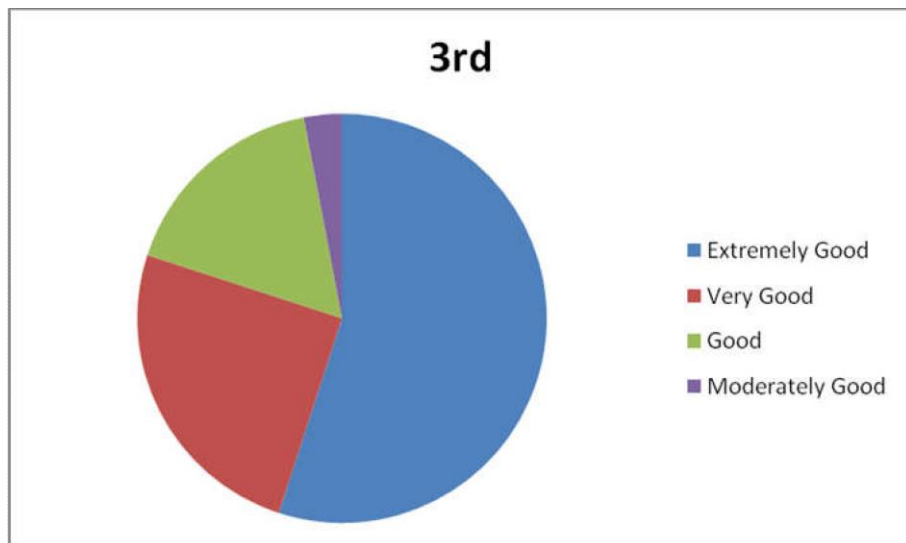
1. Depth of the course content



1ST Year



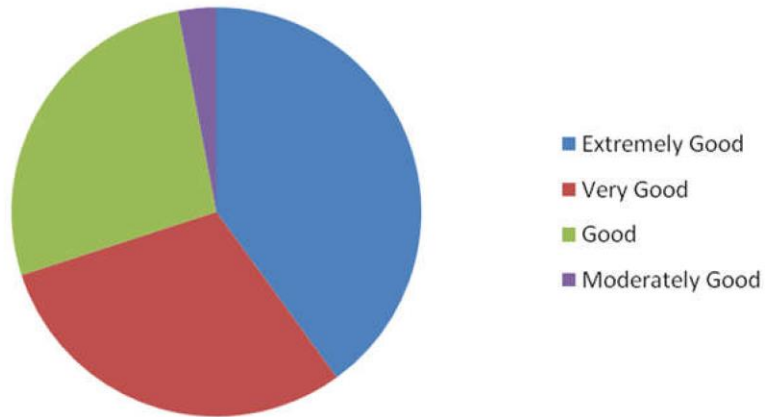
2nd Year



3rd Year

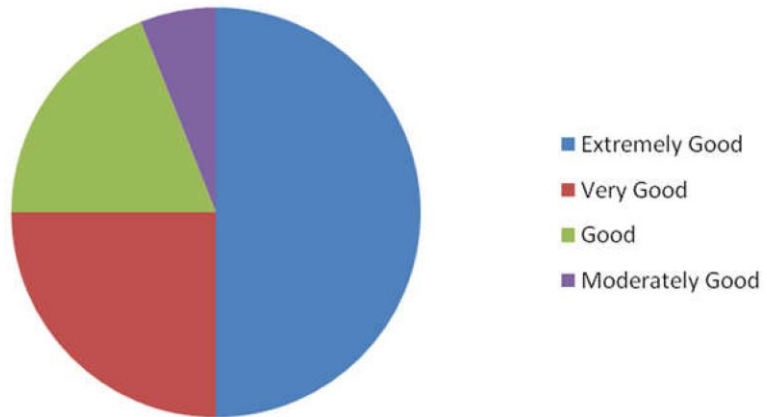
2. Extent of coverage of course

1st

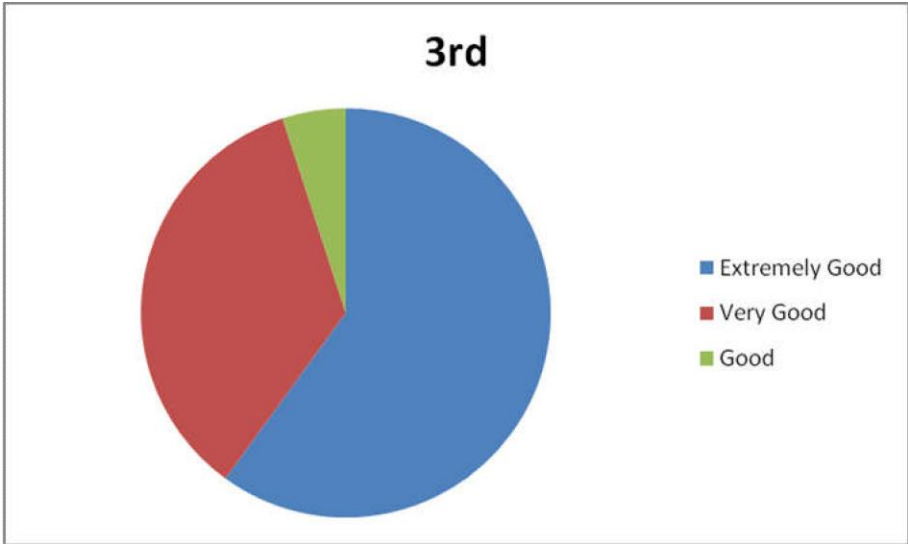


1st

2nd

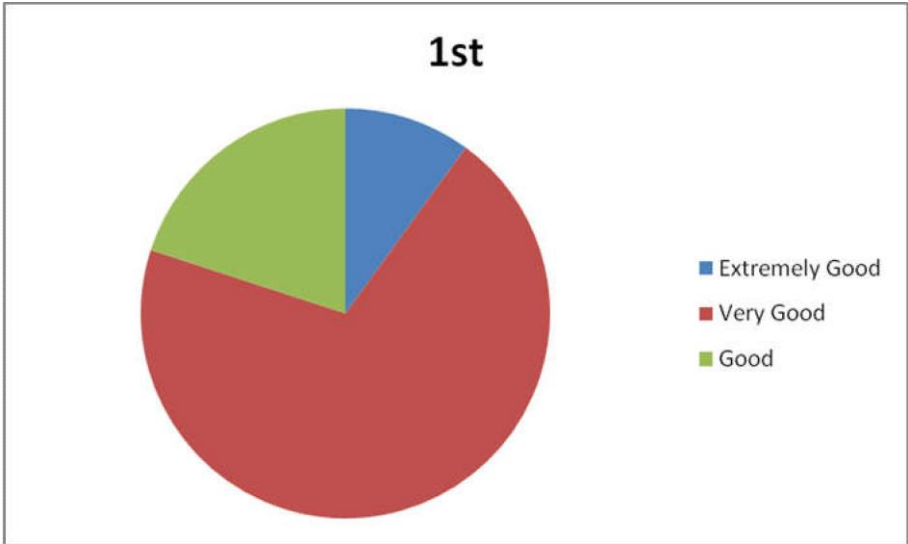


2nd

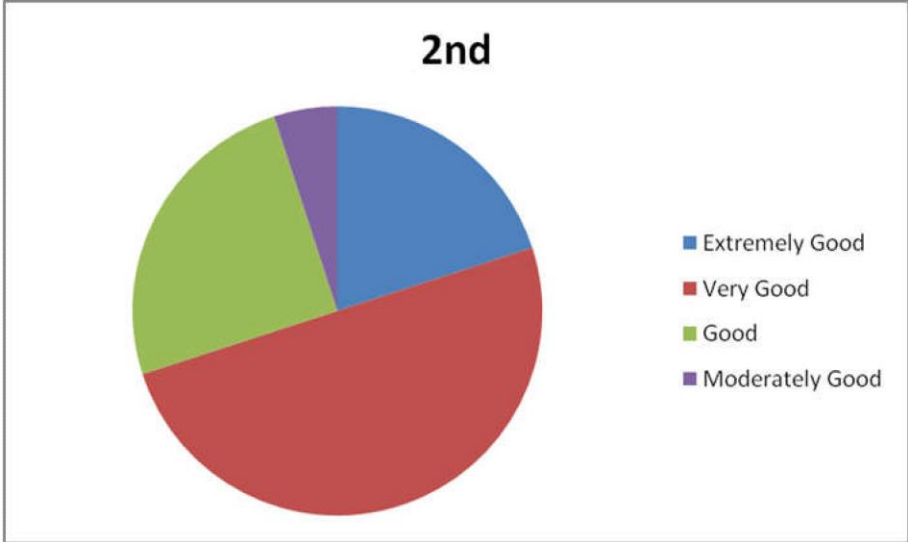


3rd

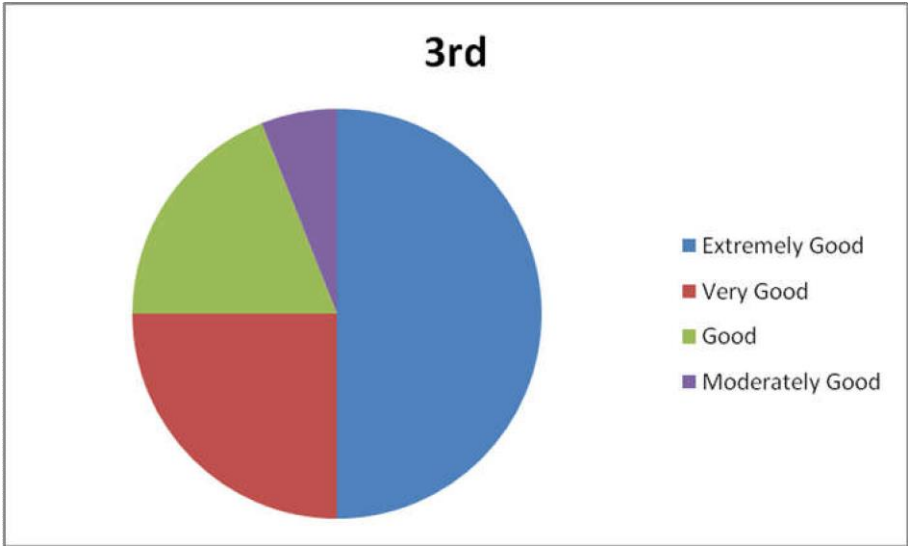
3. Applicability/ relevance to real life situations



1st



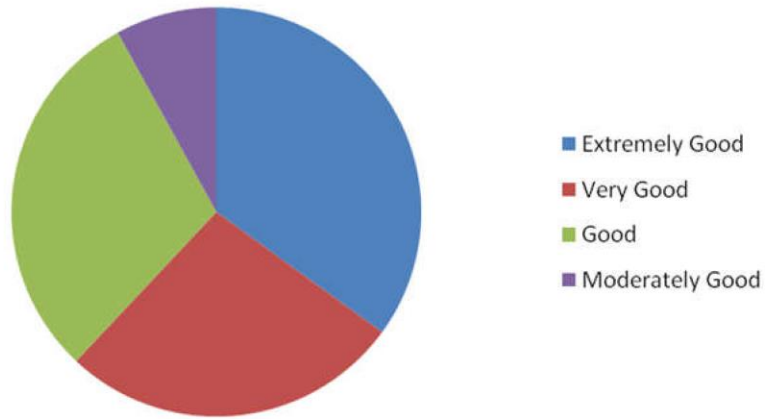
2nd



3rd

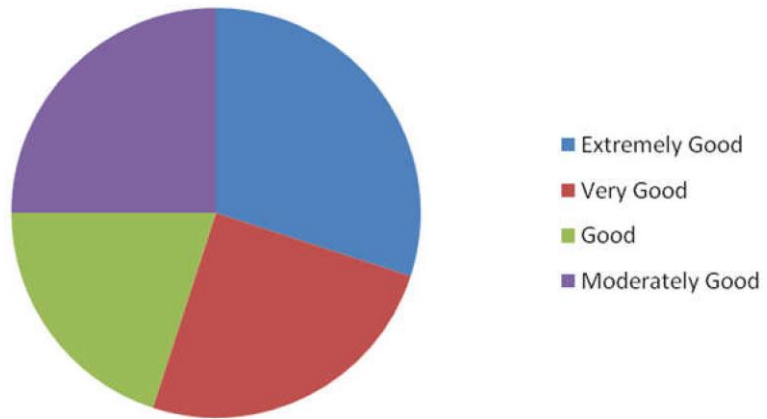
4. Learning Value

1st

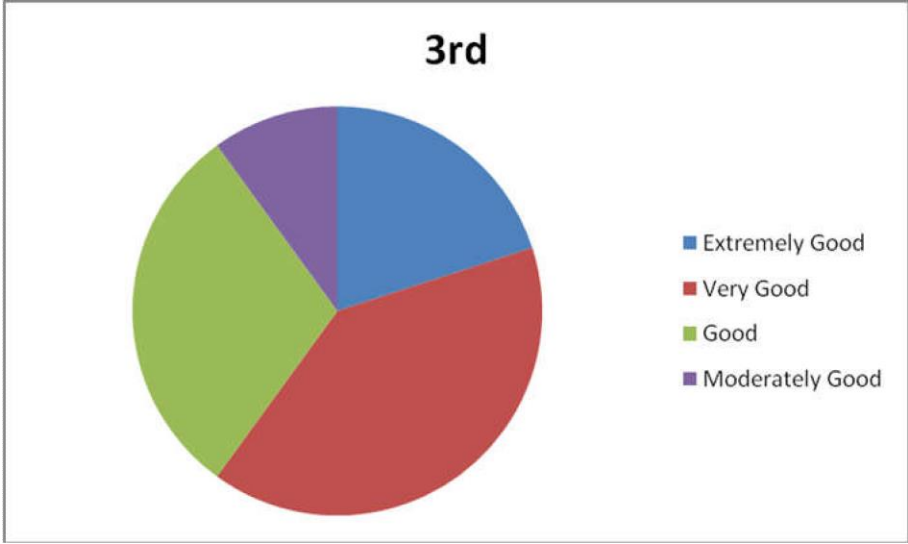


1st

2nd

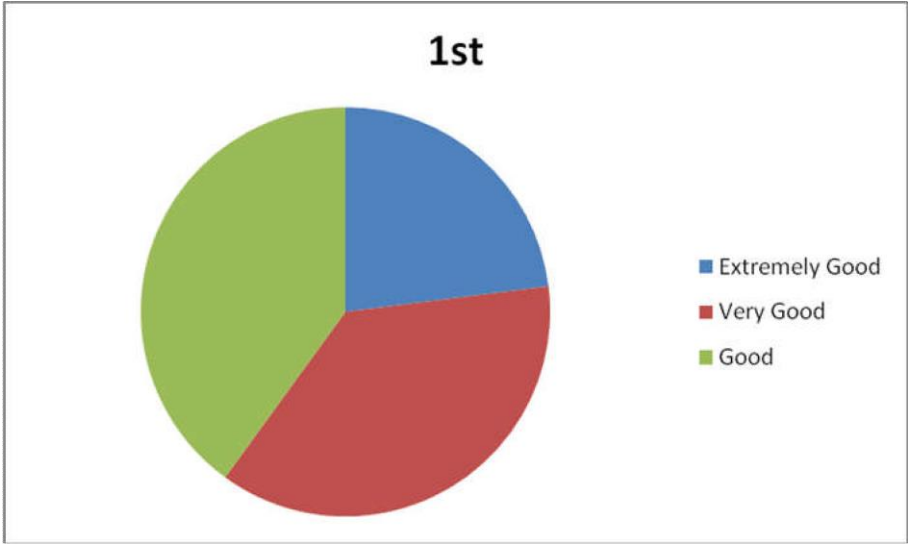


2nd

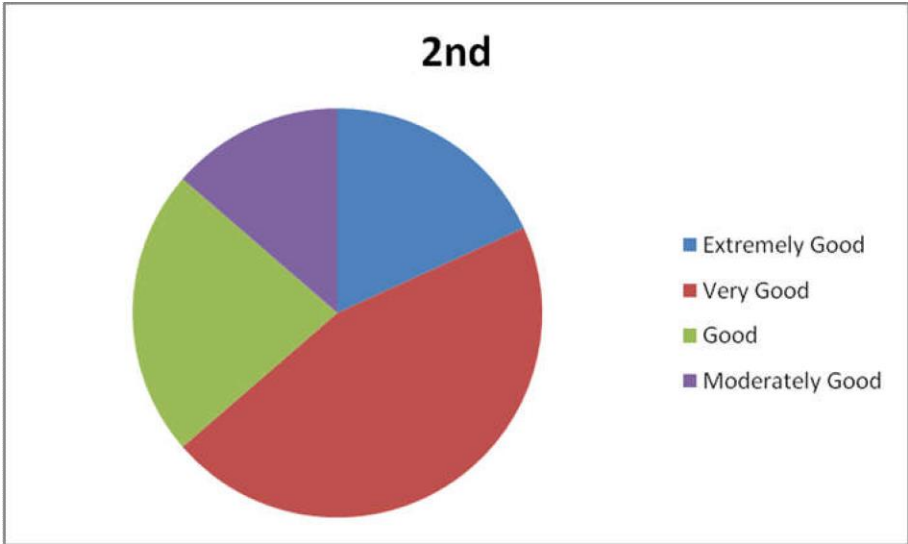


3rd

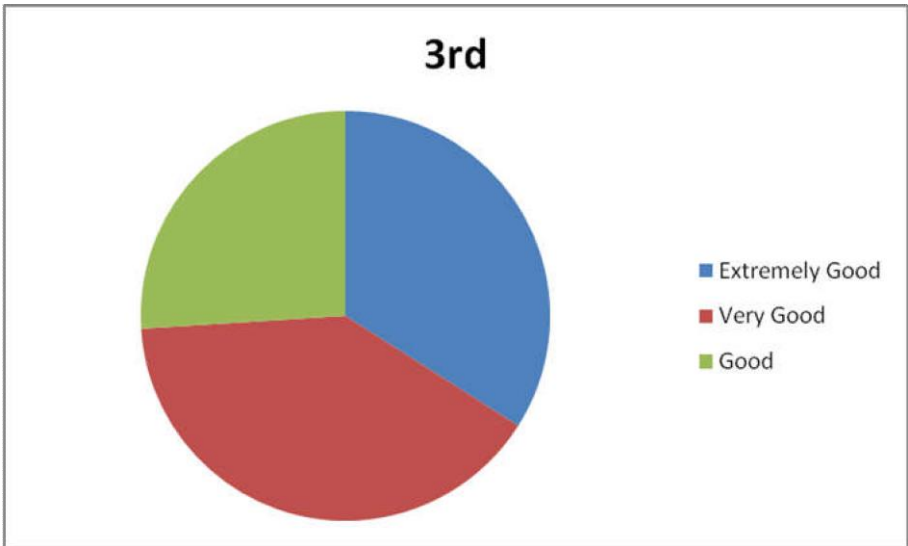
5. Clarity and relevance of textual regarding material



1st

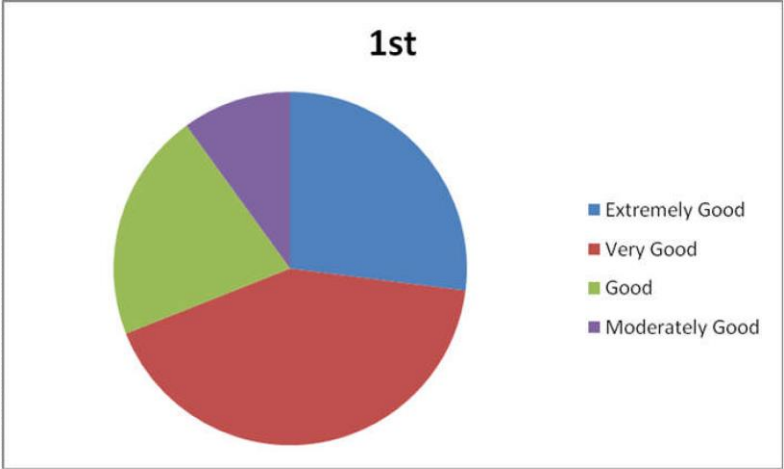


2nd

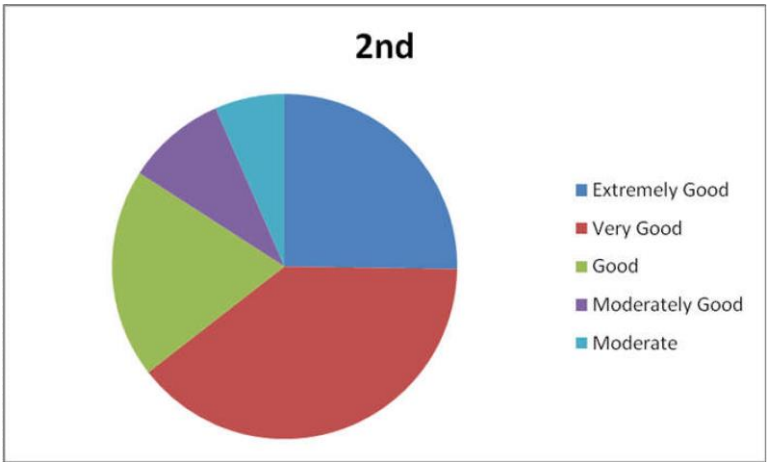


3rd

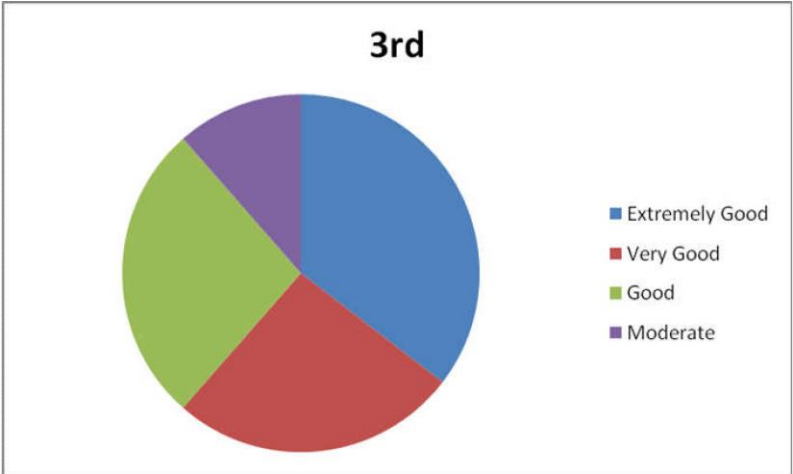
6. Relevance of additional source material (Library)



1st

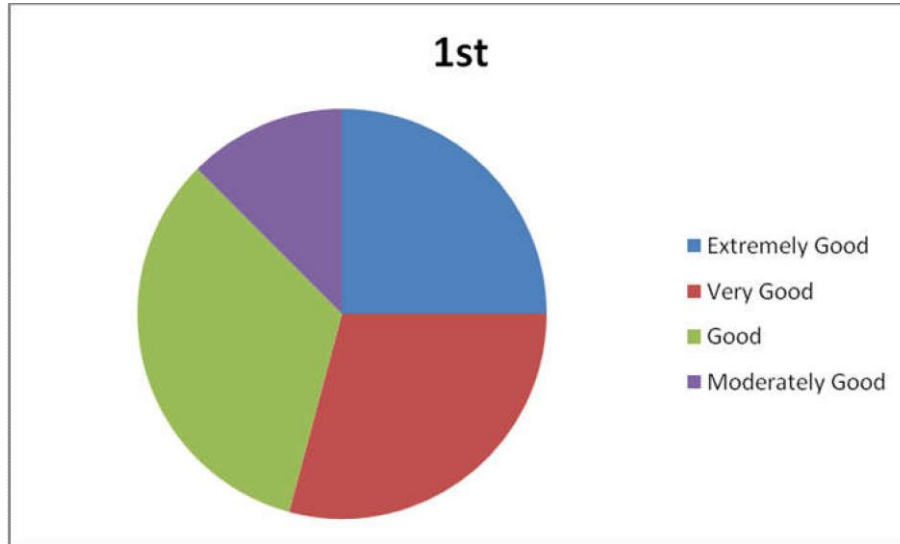


2nd

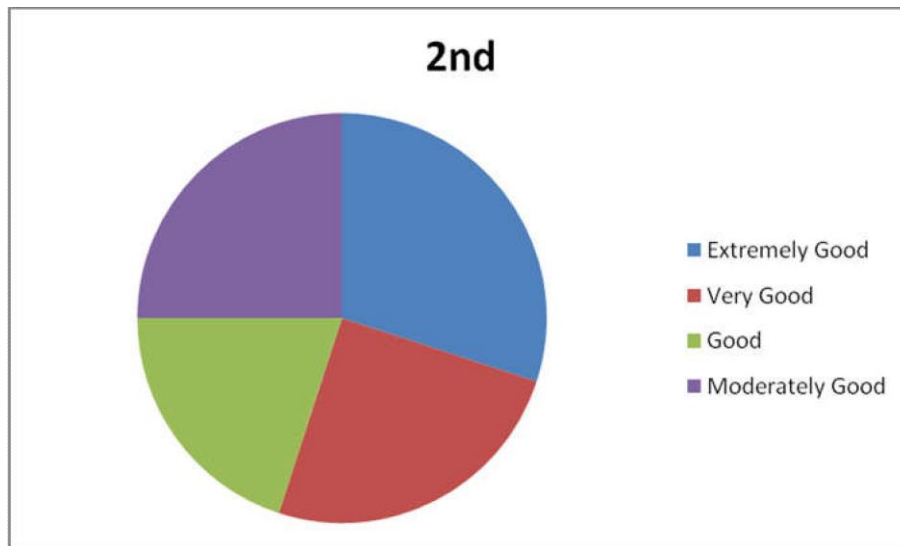


3rd

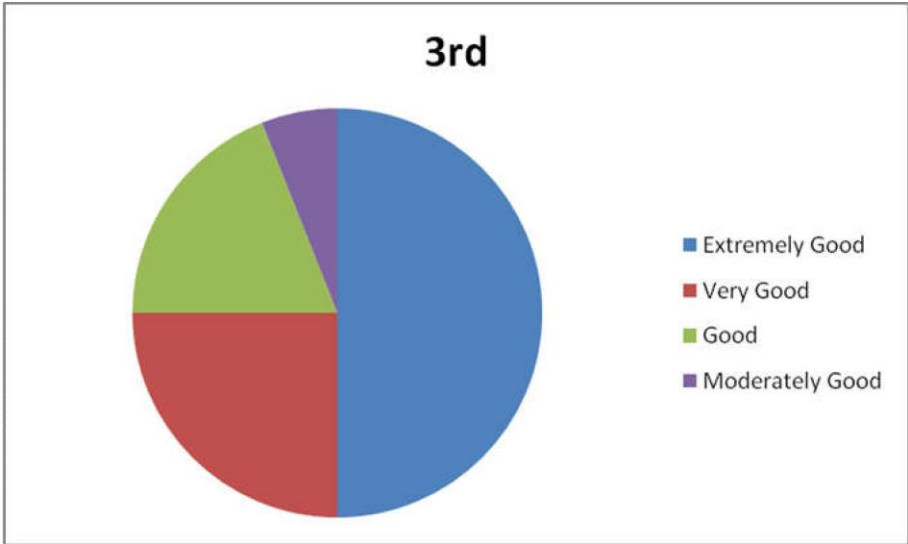
7. Extent of effort required by student



1st

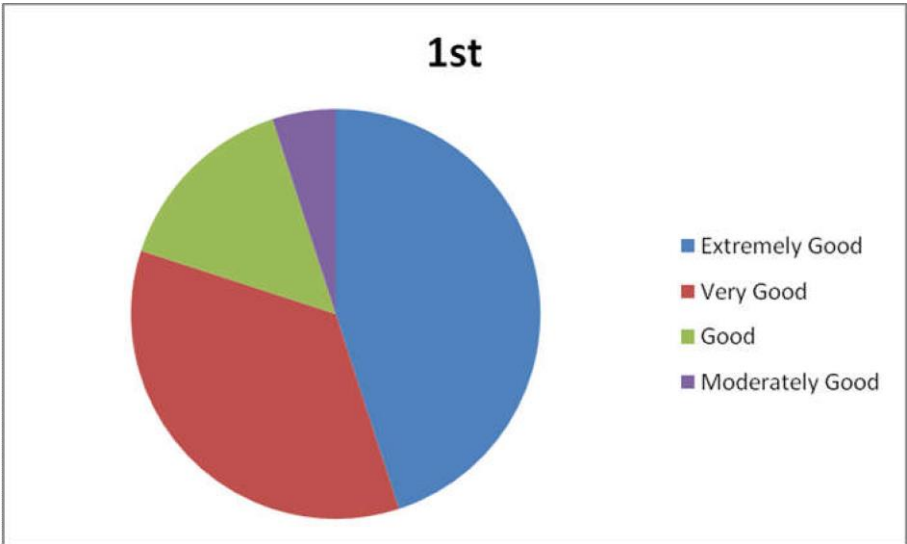


2nd

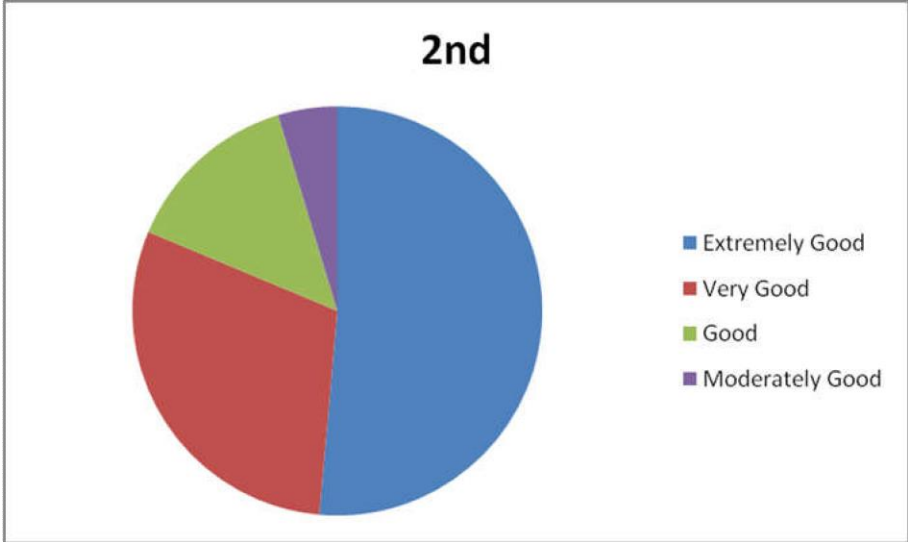


3rd

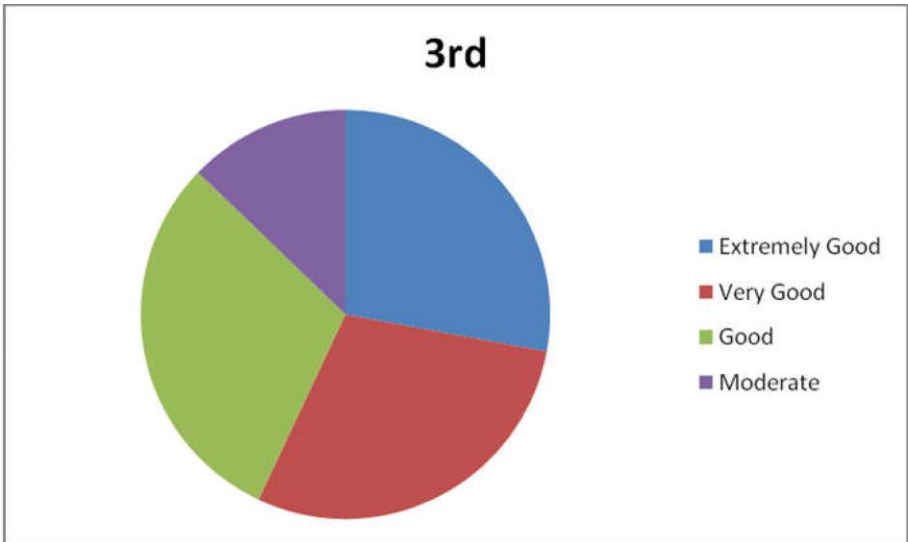
8. Overall rating



1st



2nd

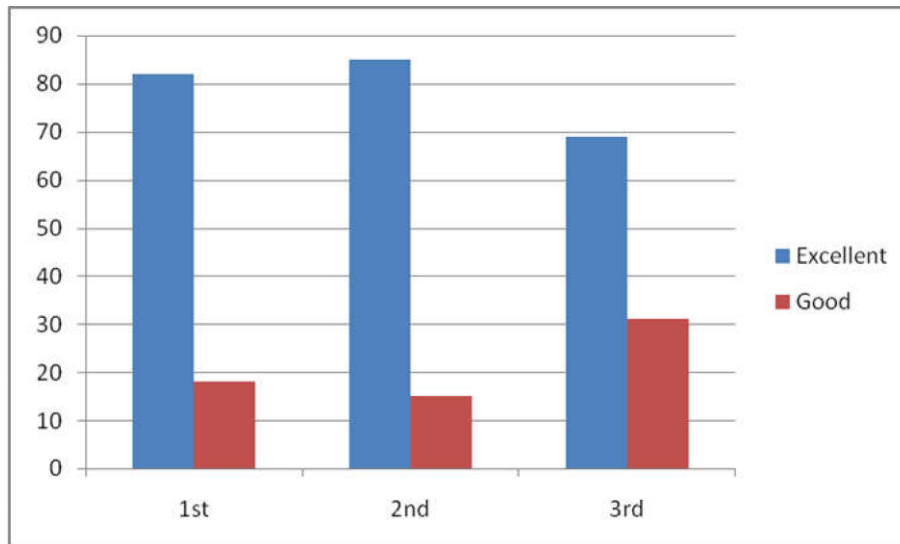


3rd

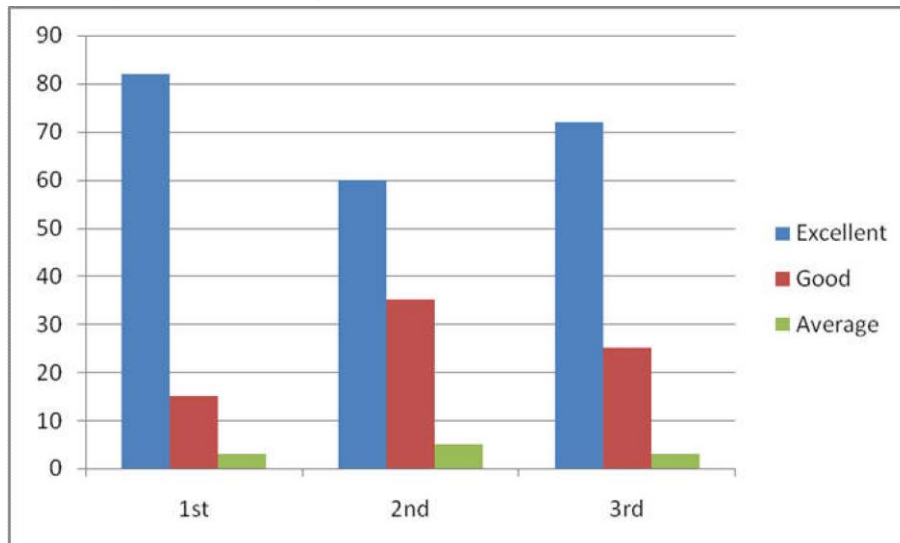
Questionnaire-2

TEACHER ASSESSMENT

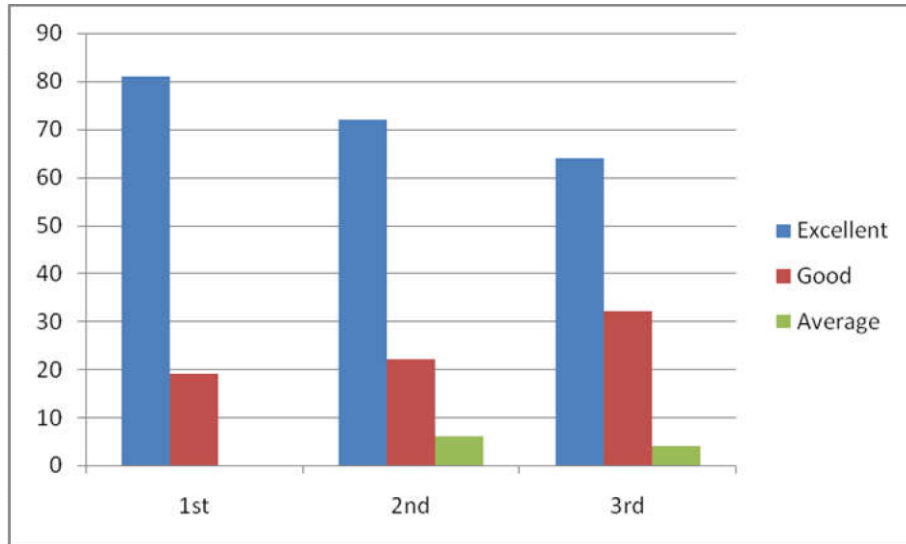
1. Knowledge base of the teacher



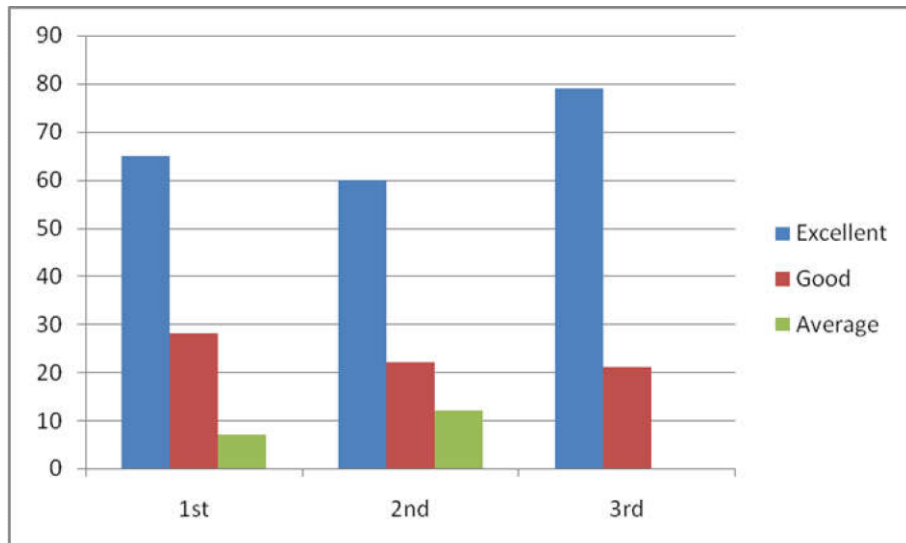
2. Focus on syllabi and teaching



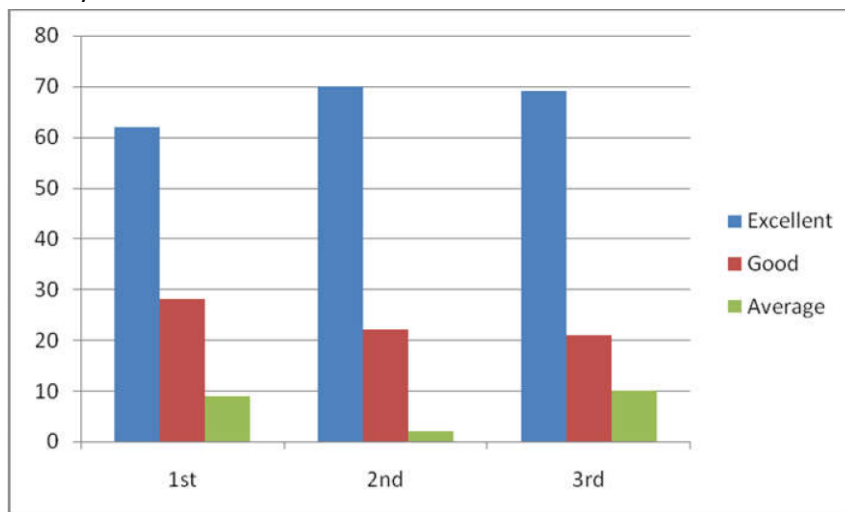
3. Communication Skills and self confidence



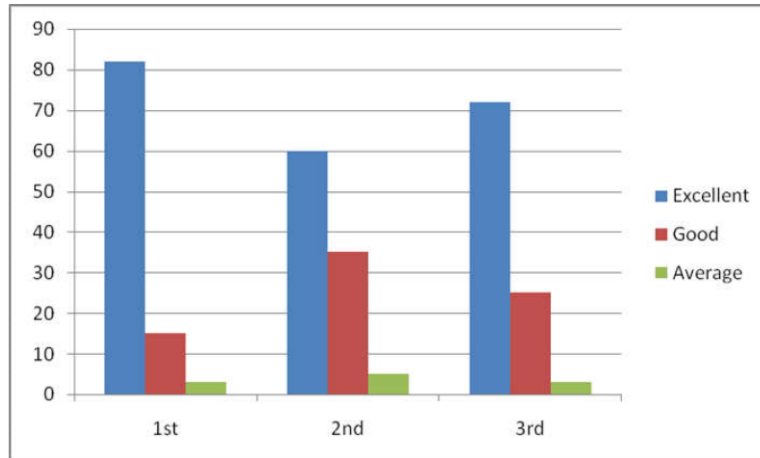
4. Effectiveness in Managing the classes



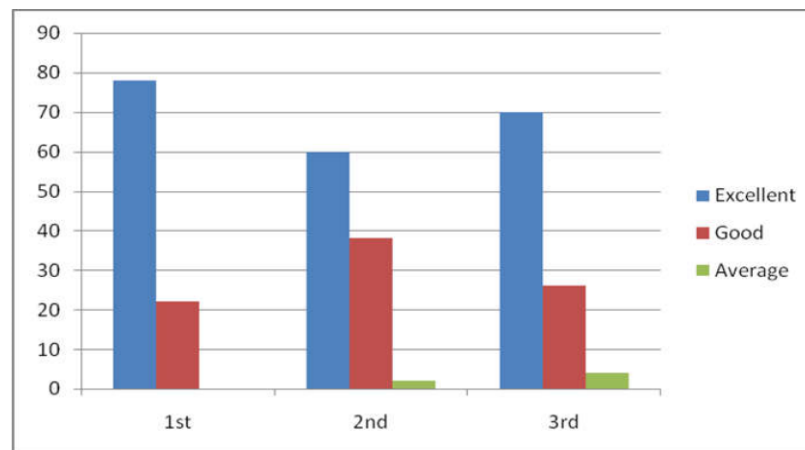
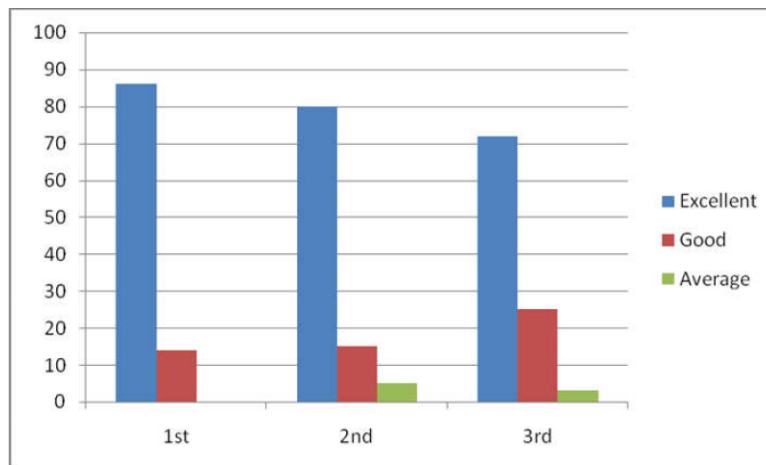
5. Delivery of structured Lecture



6. Regularity and Sincerity

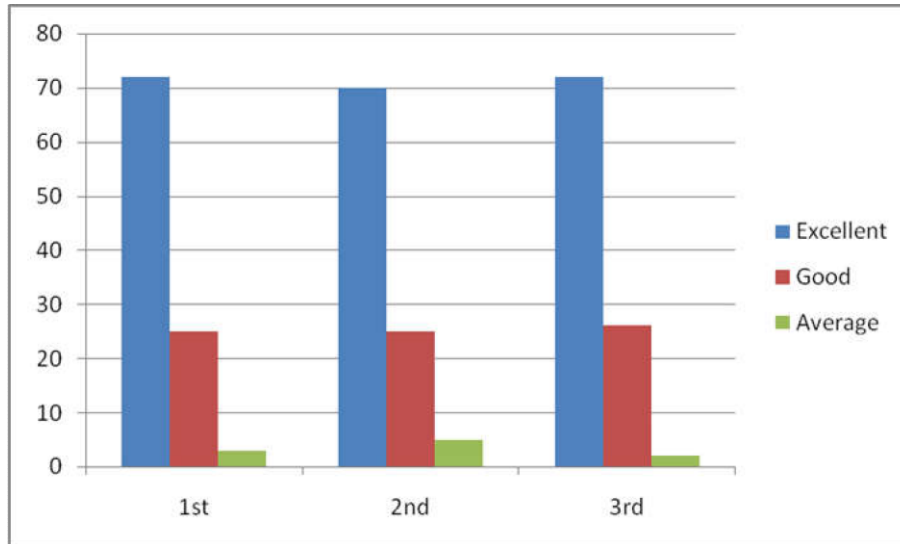


7. Completion of Syllabus in time

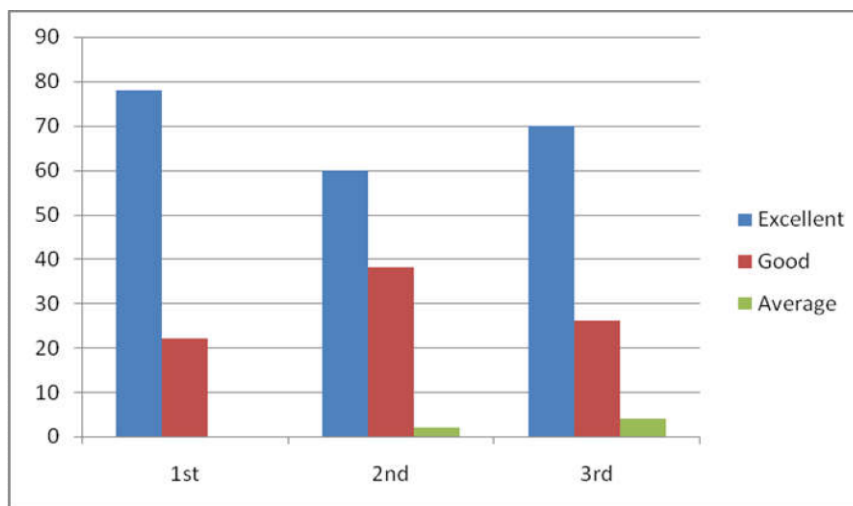


8. Preparation of the topic taught in the class

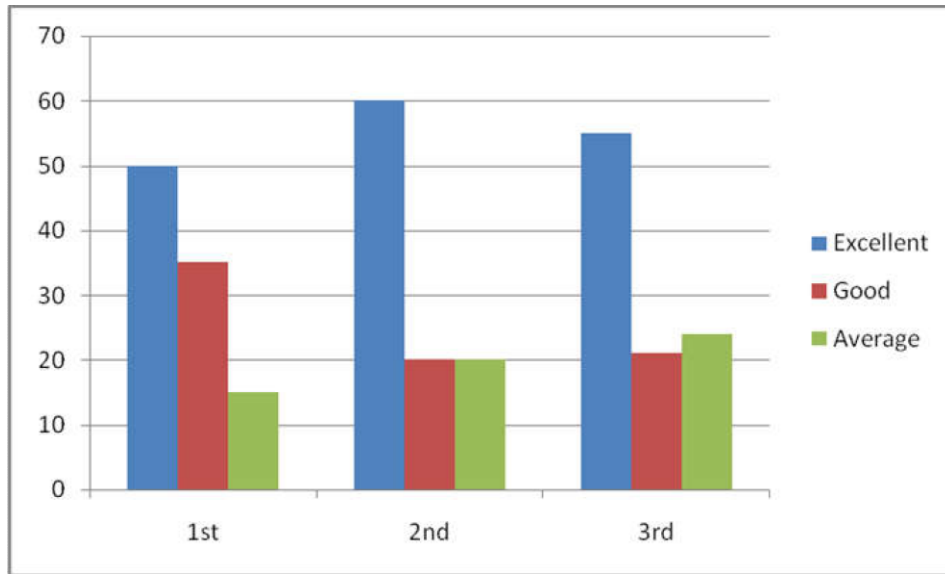
9. The teacher's attitude towards the students in friendly and helpful



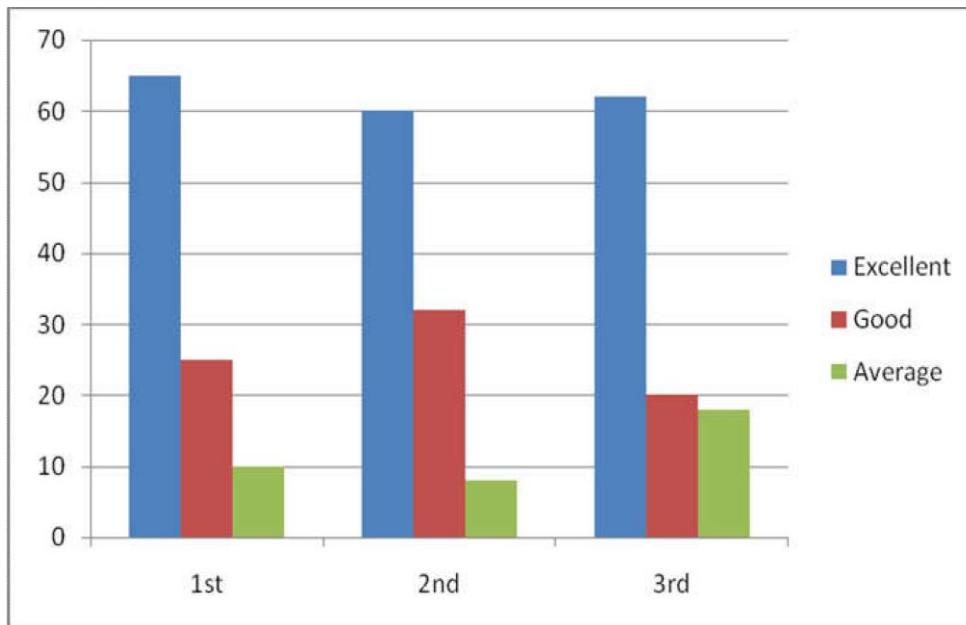
10. The evaluation process if fair and unbiased



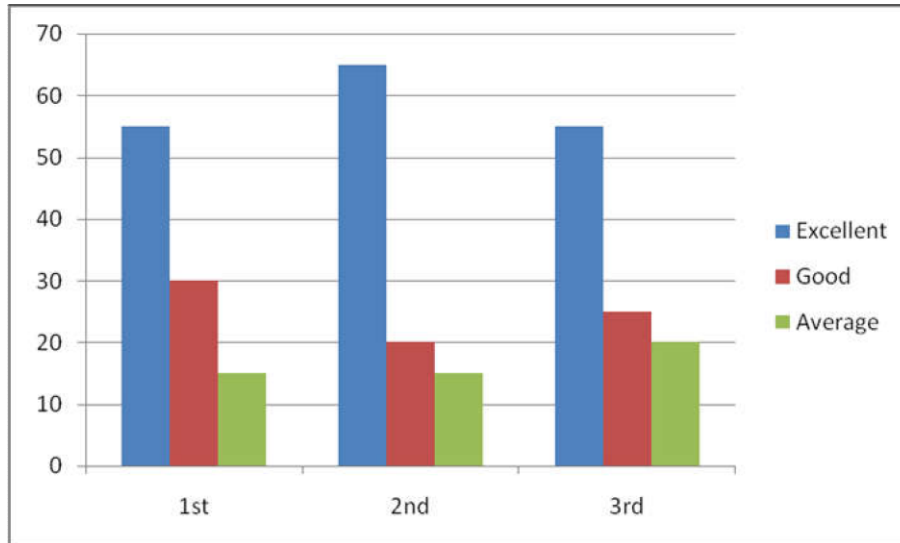
11. Ability to bring conceptual clarity and promotion of thinking ability by teachers



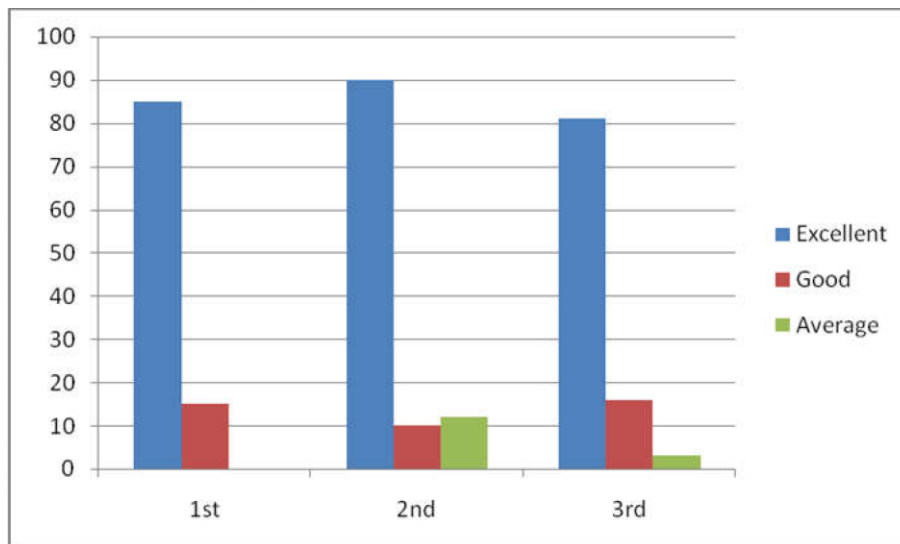
12. Accessibility of the teacher in and out of the class



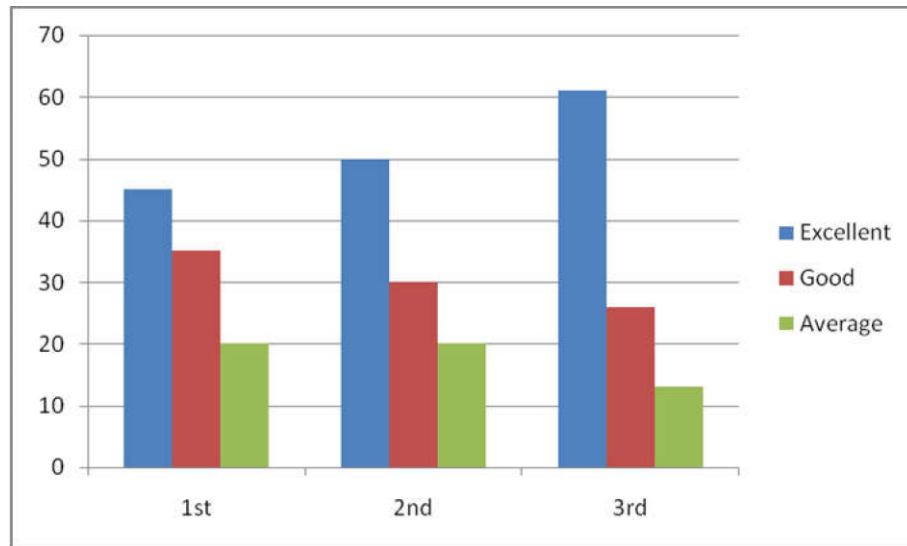
13. Teacher's computer and IT skill



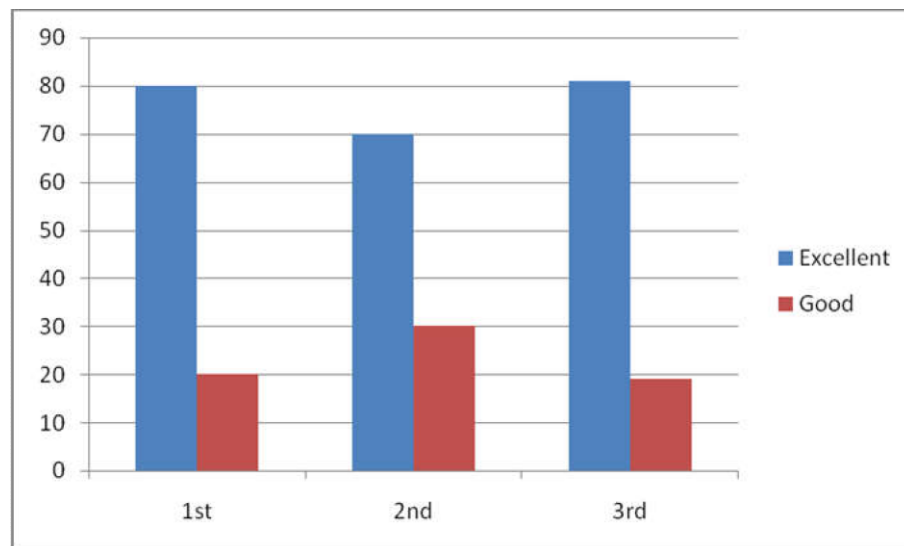
14. Lab work (Wherever applicable)



15. Ability to design quizzes/seminars etc

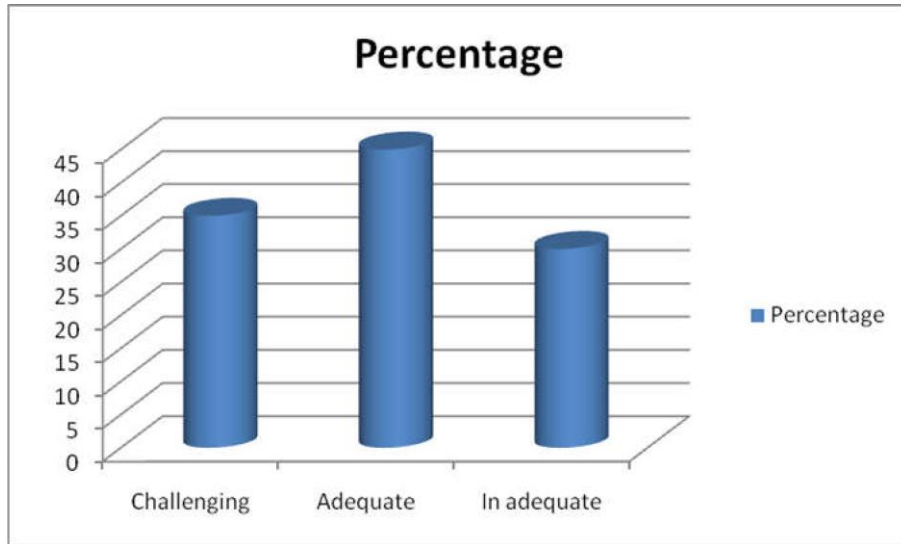


16. Overall performance

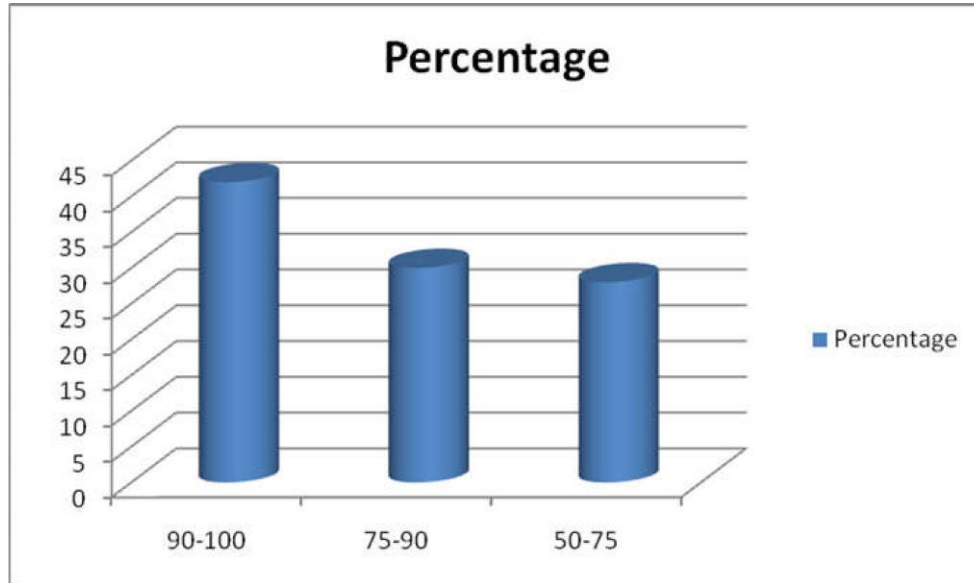


QUESTIONNAIRE-4

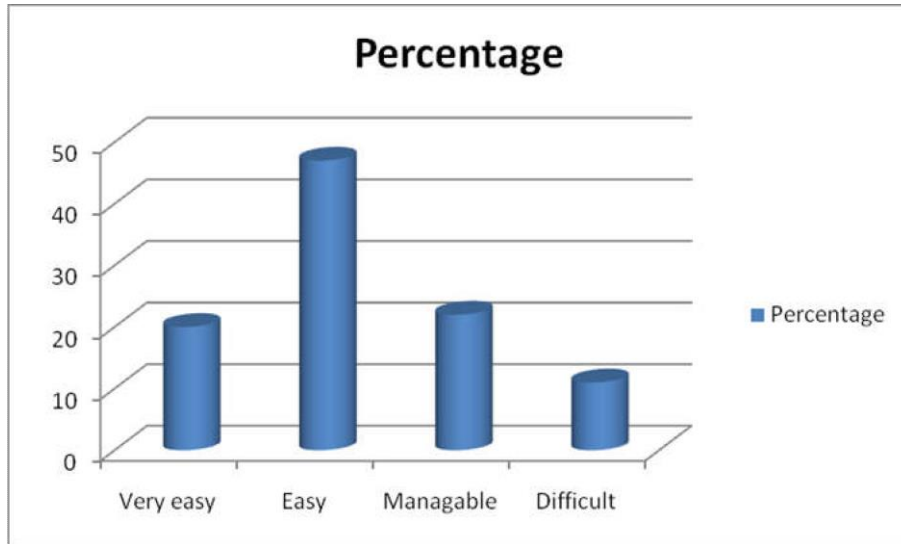
Q1. Syllabus



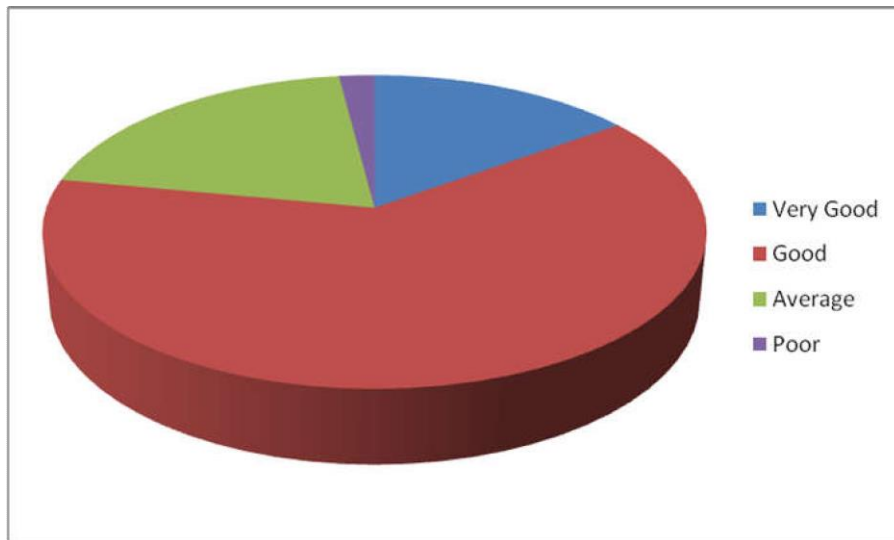
Q2. Syllabus taught in class



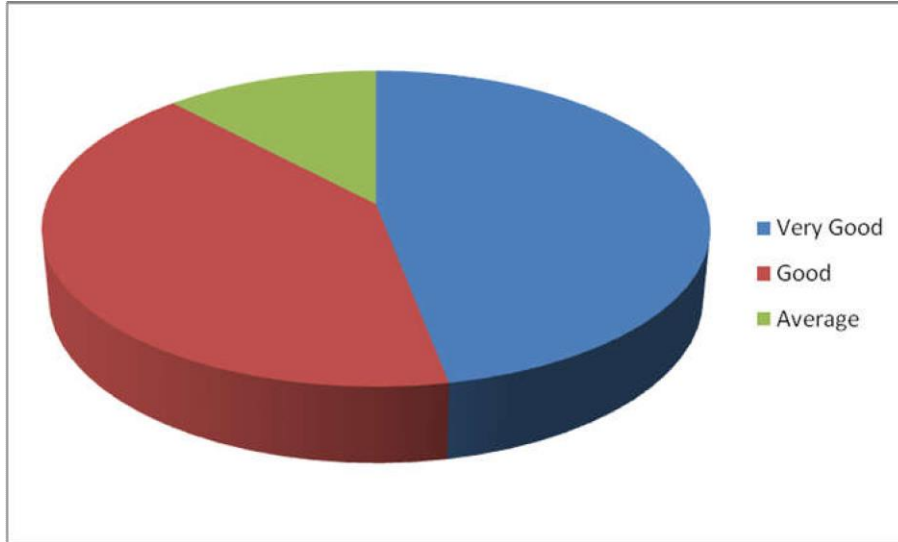
Q3. Course understanding



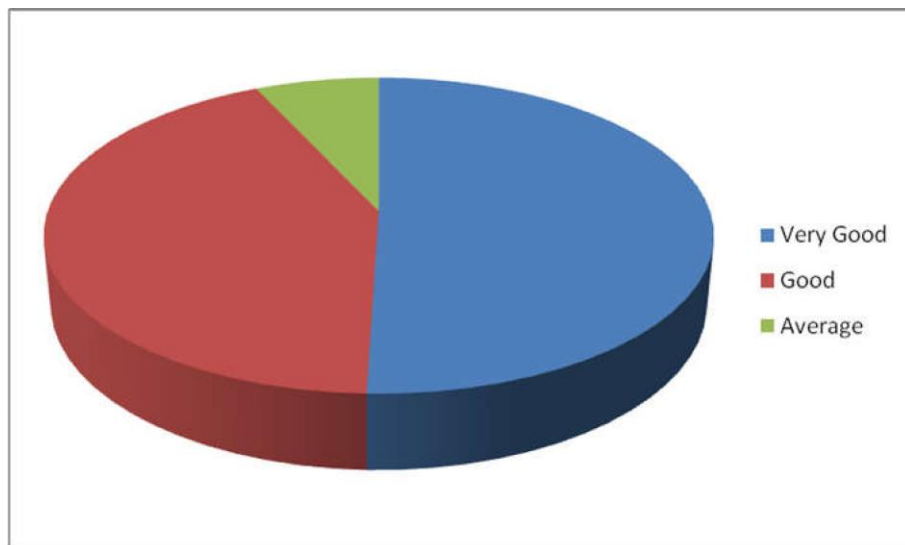
Q4i. Availability of getting prescribed readings



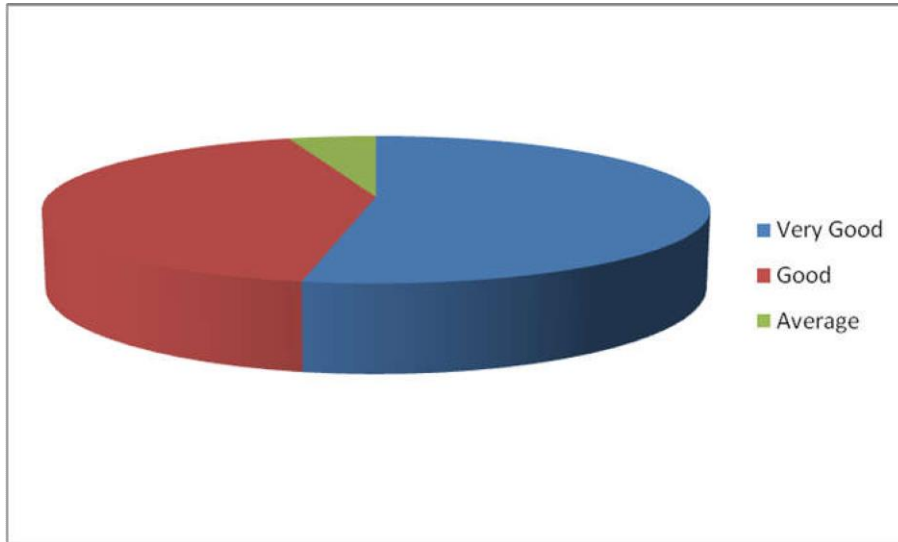
Q4ii. Internal evaluation system



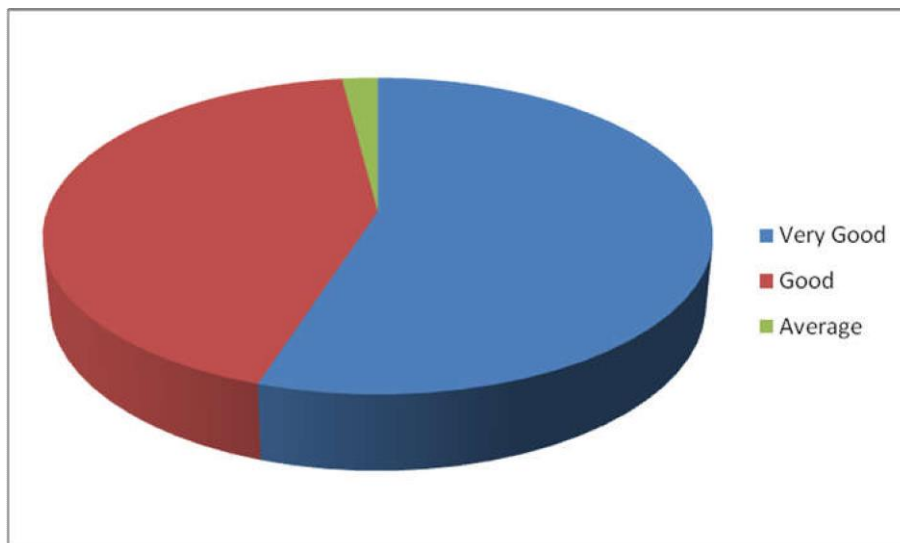
Q4iii. Availability of books/ study material in seminar library



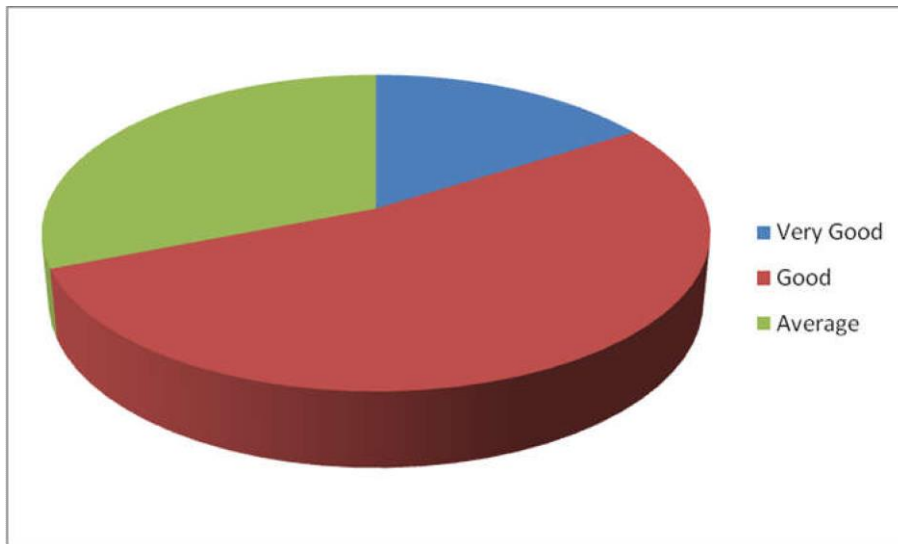
Q4iv. Student- teacher relationship as a whole



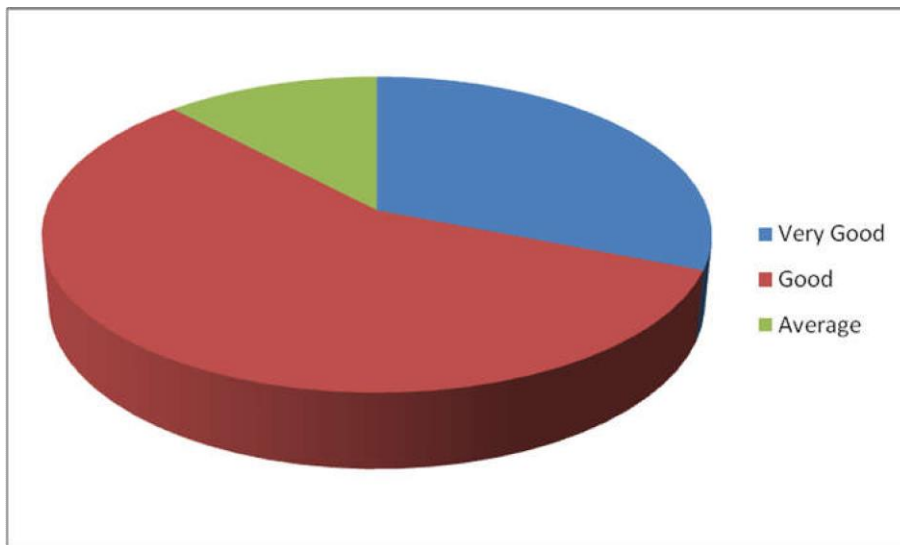
Q4v. Student- teacher relationship in department



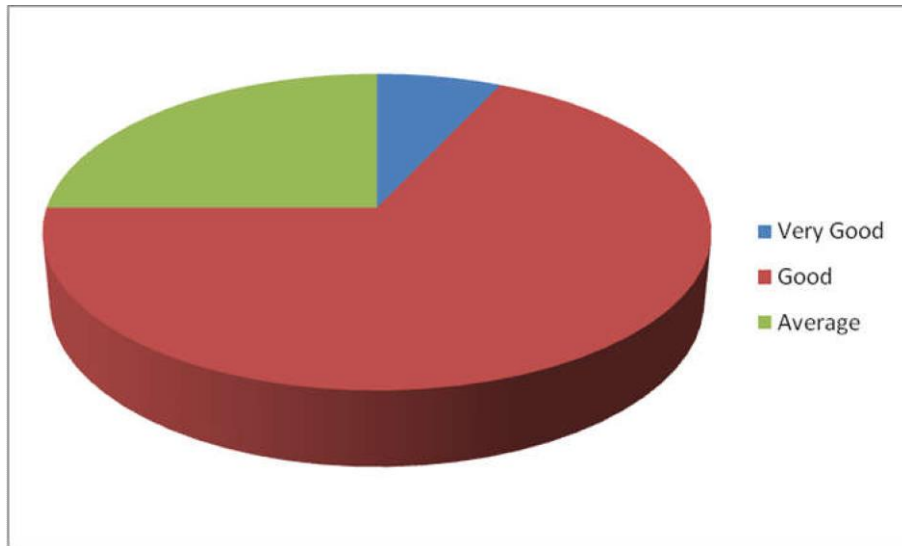
Q4vi. Availability of common room and reading room in college



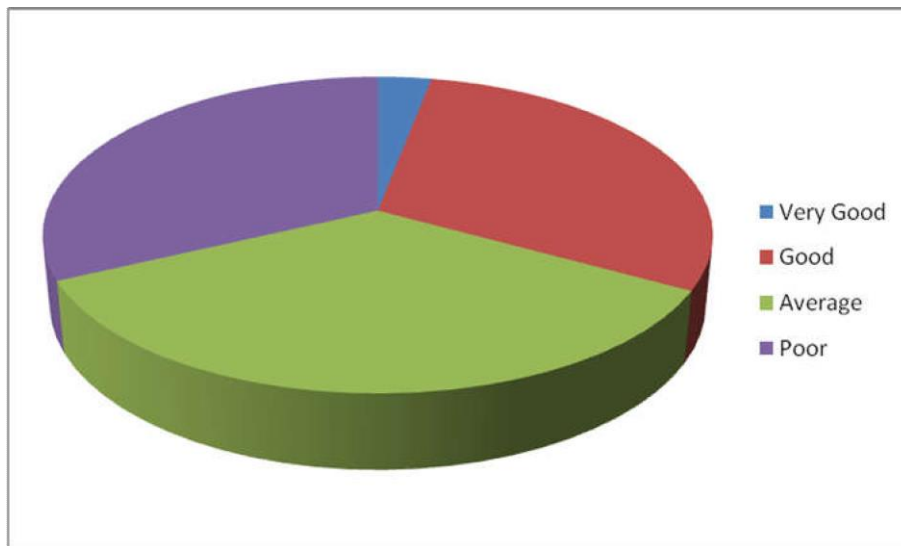
Q4vii. Availability of reading space in library/ seminar library



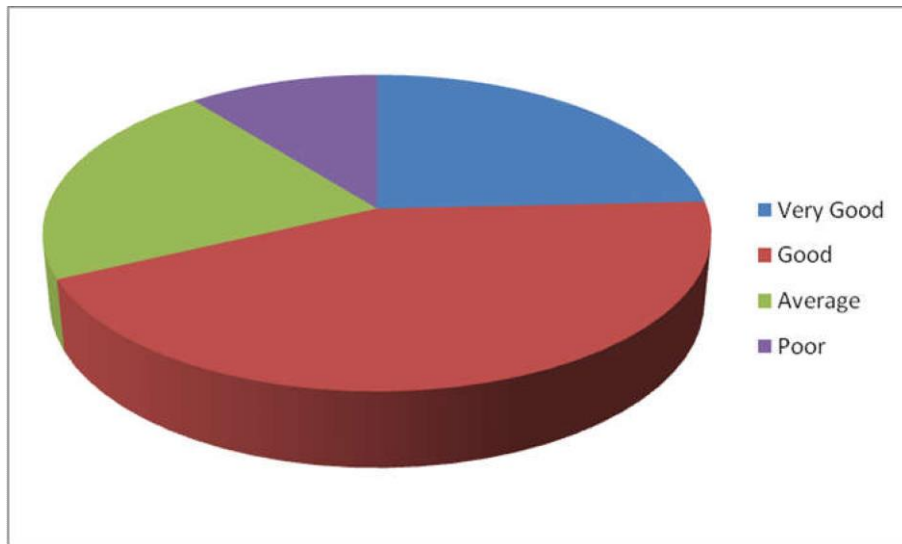
Q4viii. Co-operating of library Staff



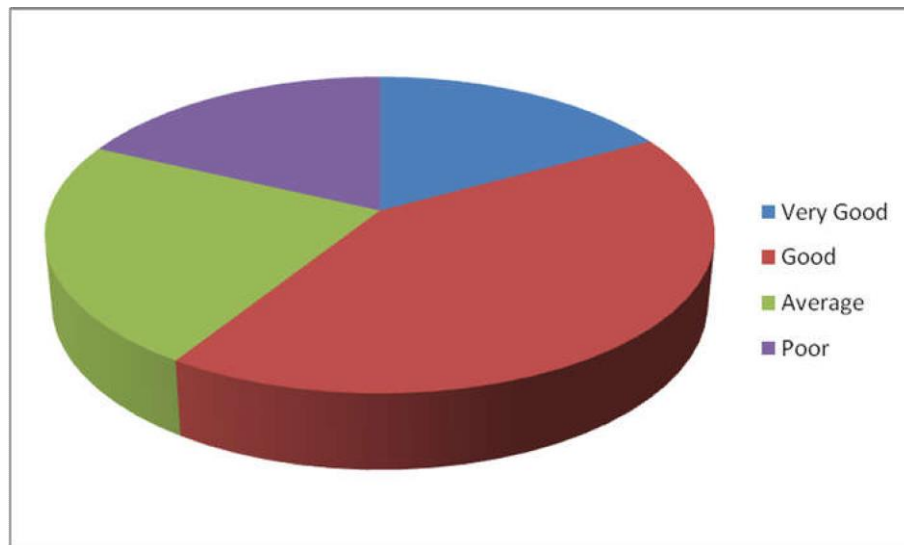
Q4 ix. Photocopying facility in the library/department



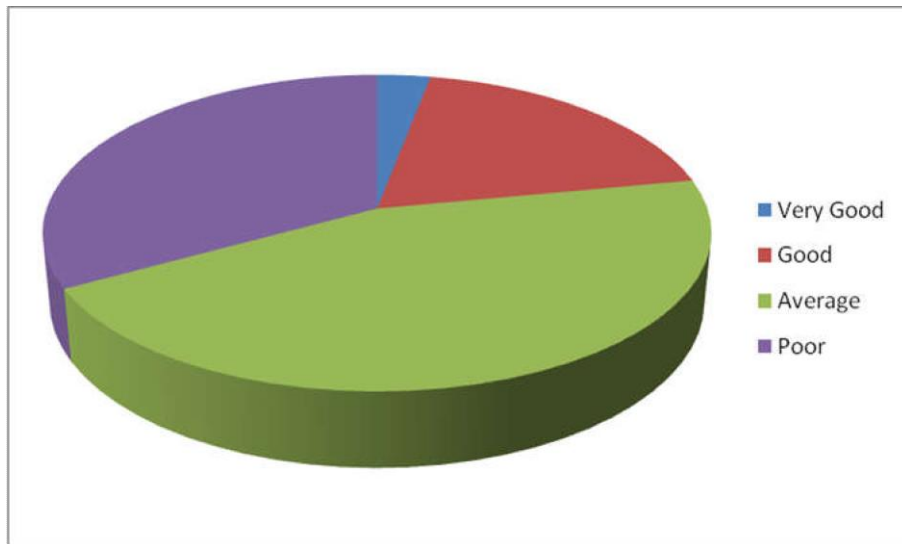
Q4 x. Availability of the internet facility in the department



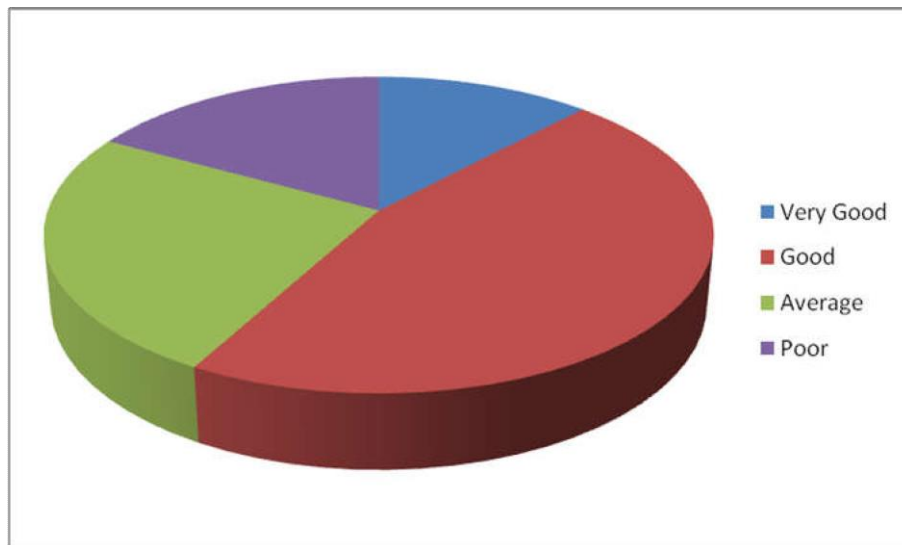
Q4 xi. Availability and accessibility of online educational resource



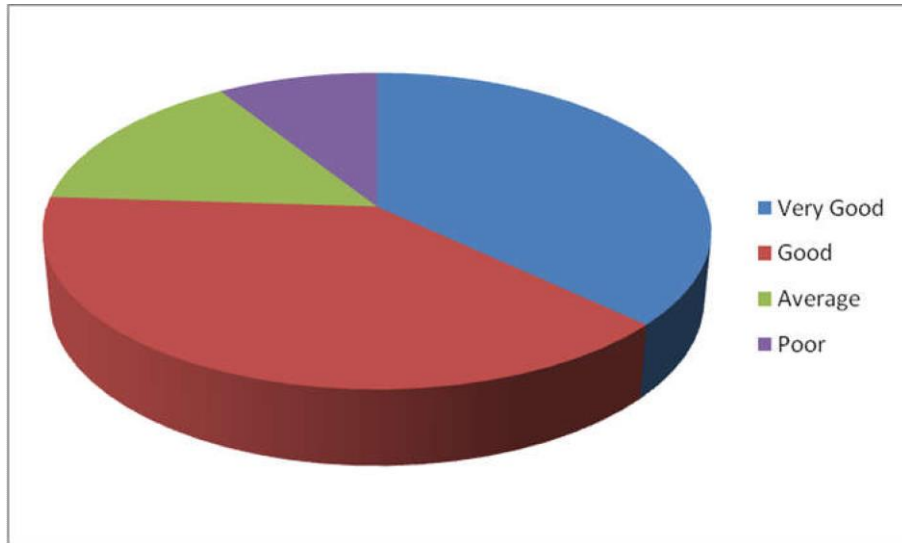
Q4 xii. How do you rate the health care facility?



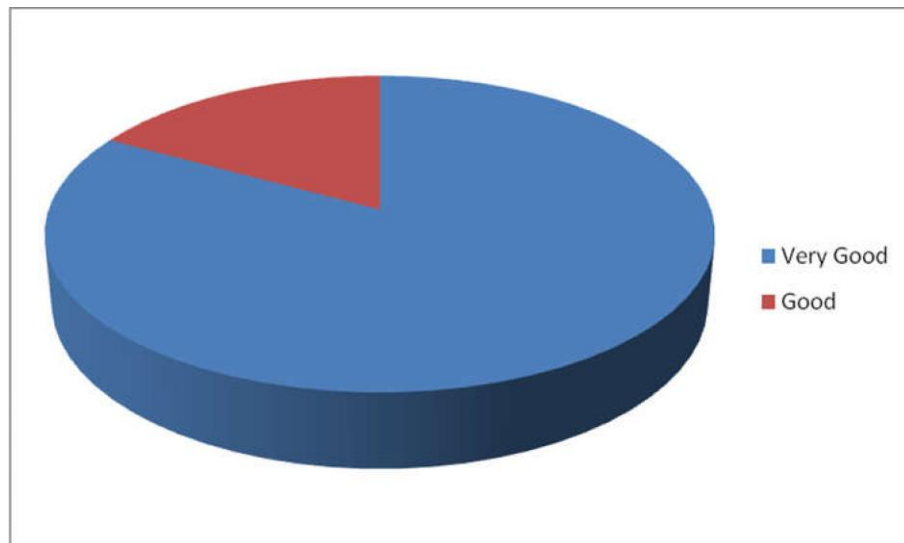
Q4 xiii. Attitude of the teachers to extracurricular activity



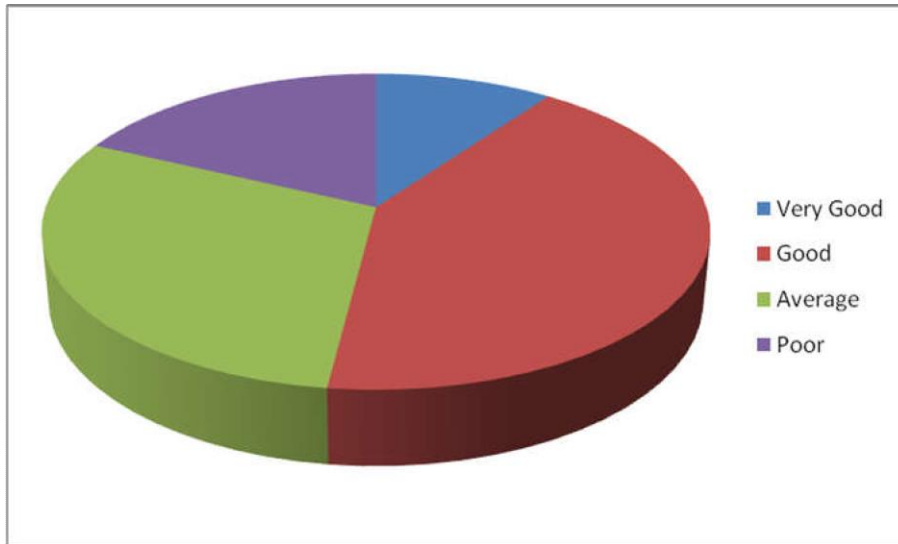
Q4 xiv. Hygienic of the toilets/washrooms



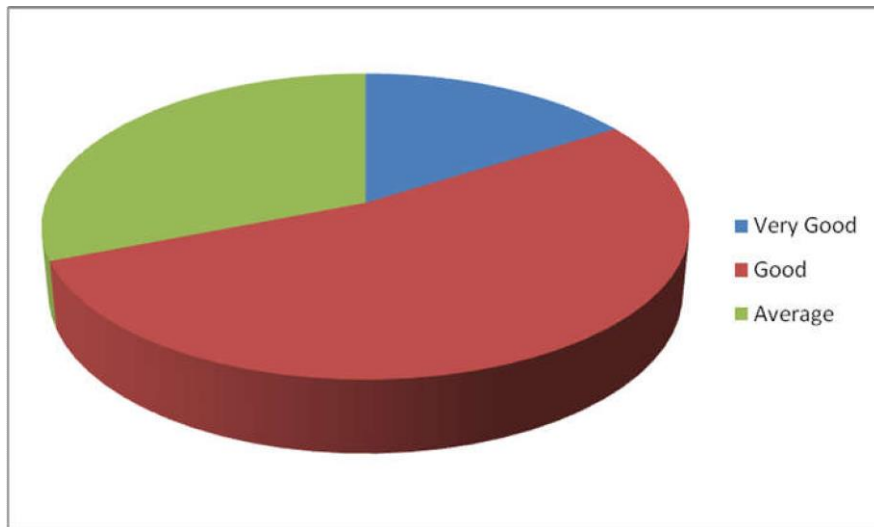
Q4 xv. Clean drinking water



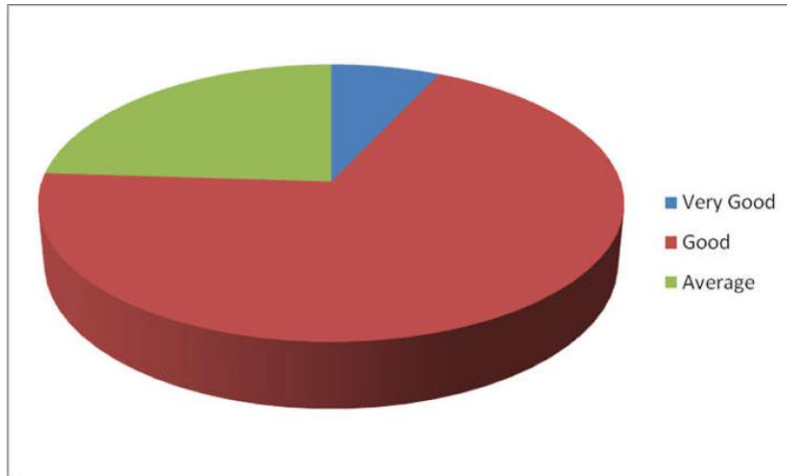
Q4 xvi. Function of the placement cell



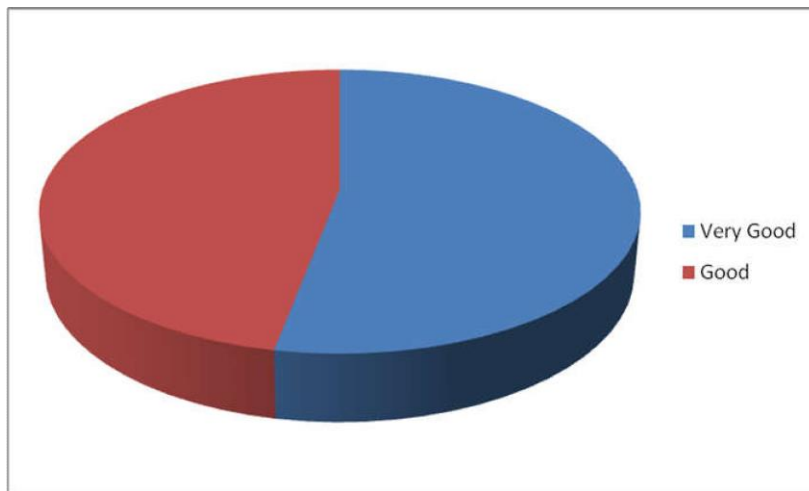
Q4 xvii. Laboratory facility



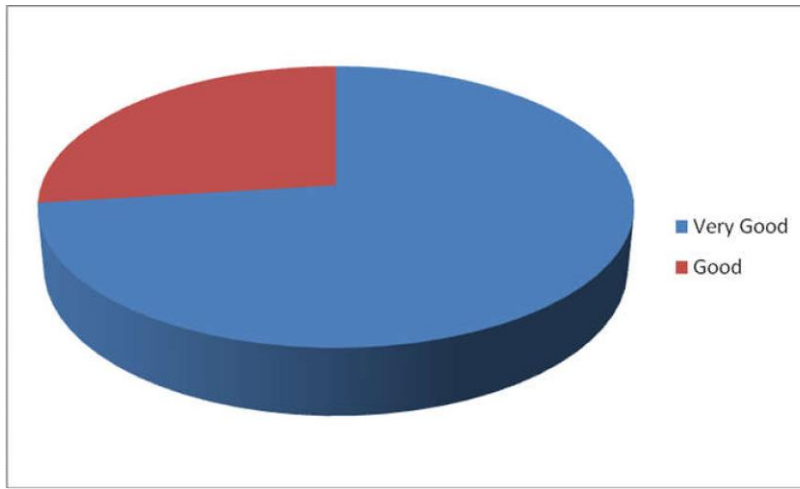
Q4 xviii. Green and Eco-friendly campus



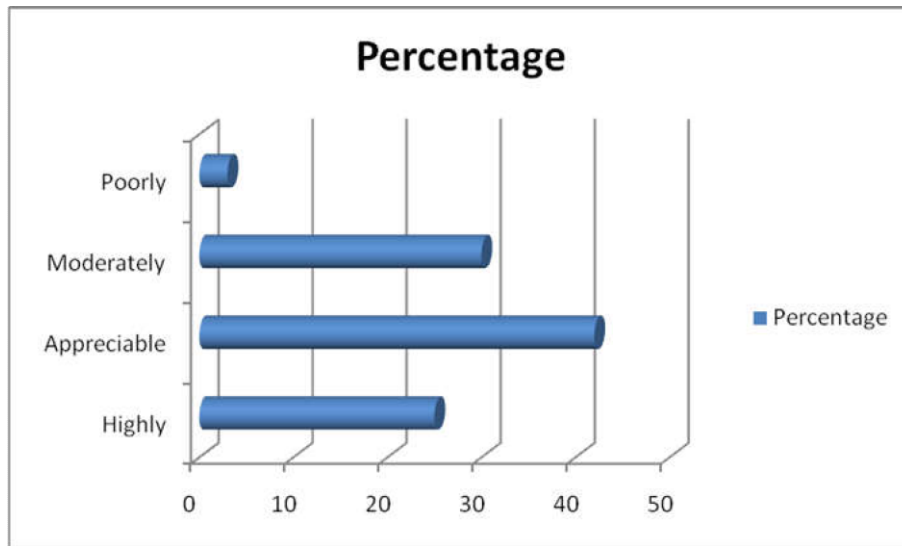
Q4 xix. Cleaning and maintenance of the college



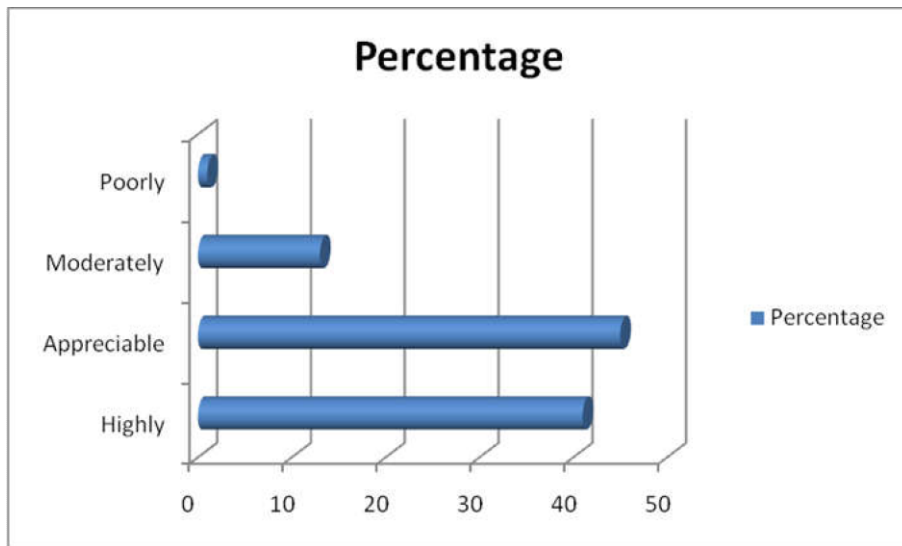
Q4 xx. Adequate Power supply



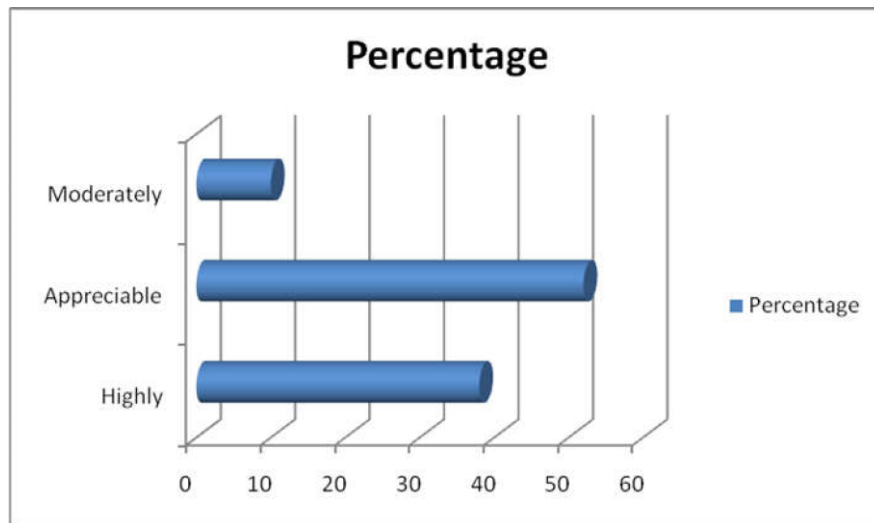
Q5 i. Understanding the course



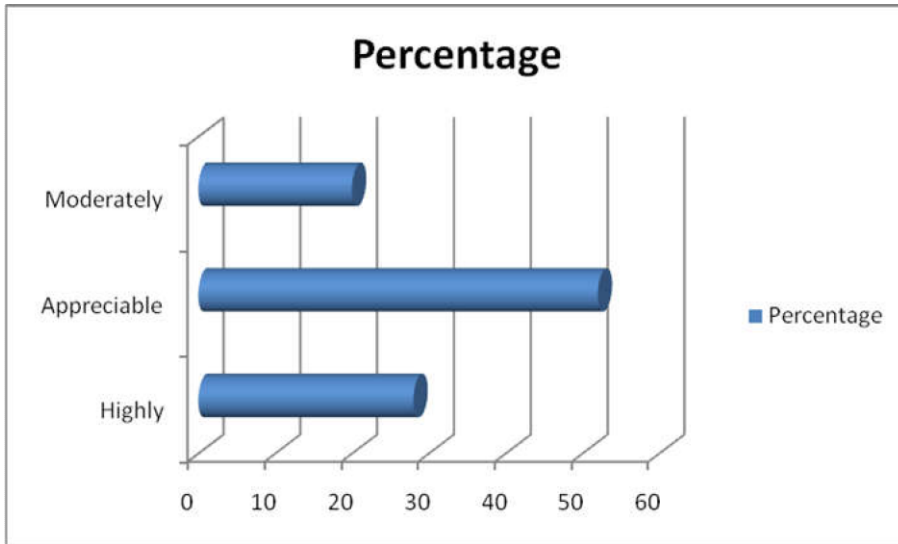
Q5 ii. Discover early difficulties



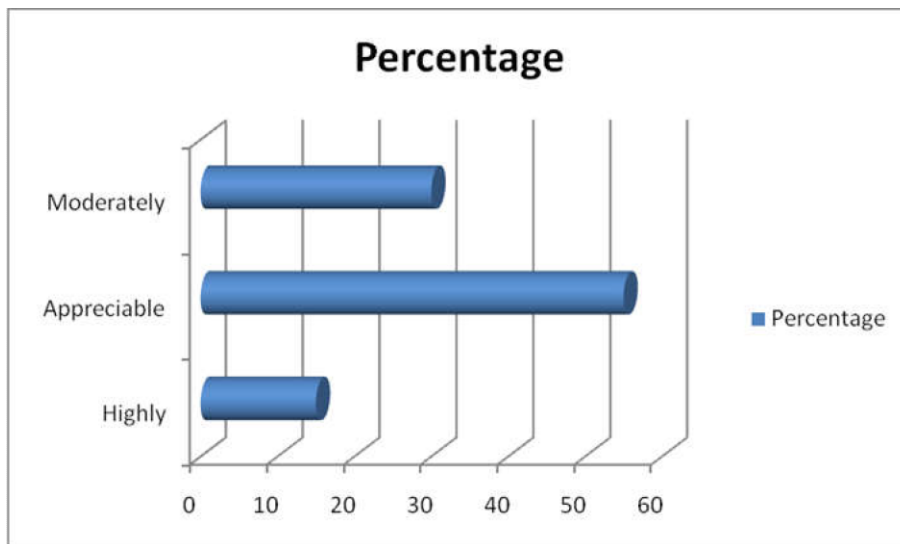
Q5 iii. Interact with the teacher



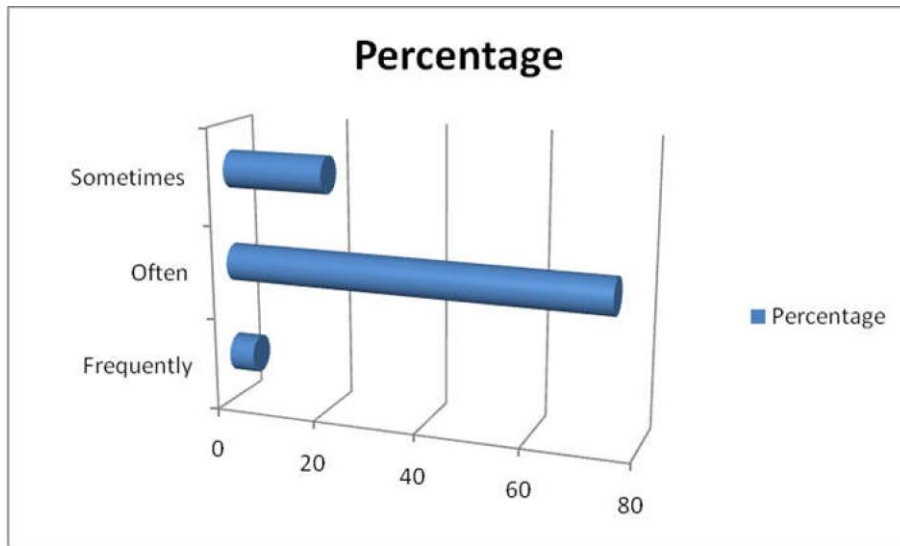
Q5 iv. Do regular work



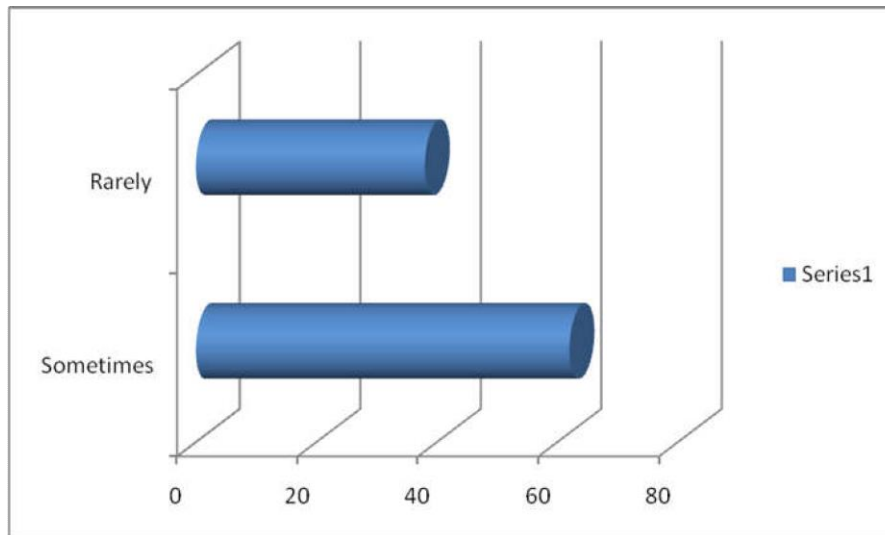
Q5 v. Be in touch with continuous self assessment



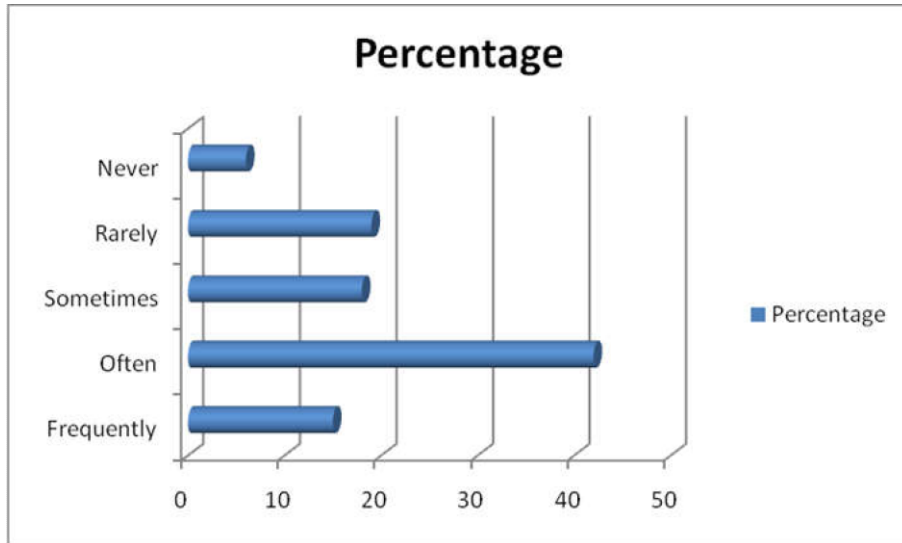
Q6 i. Outside experts invited to address



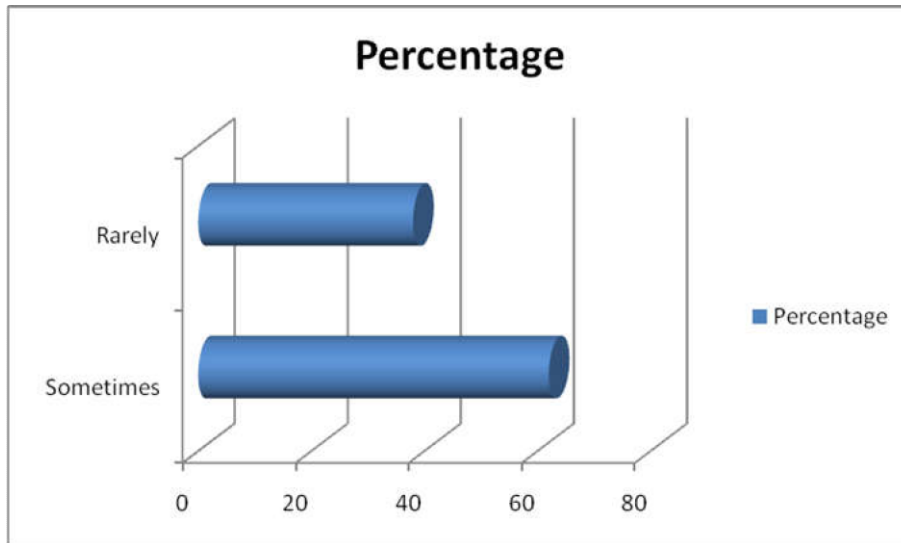
Q6 ii. Visit industries, laboratories, bank and any other Universities



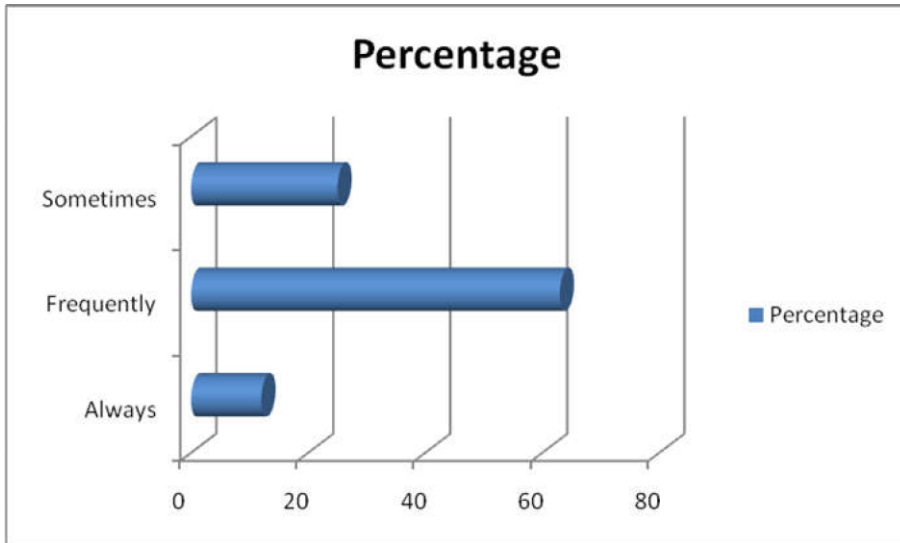
Q6 iii. Participation in any of the extracurricular activities of the department/college



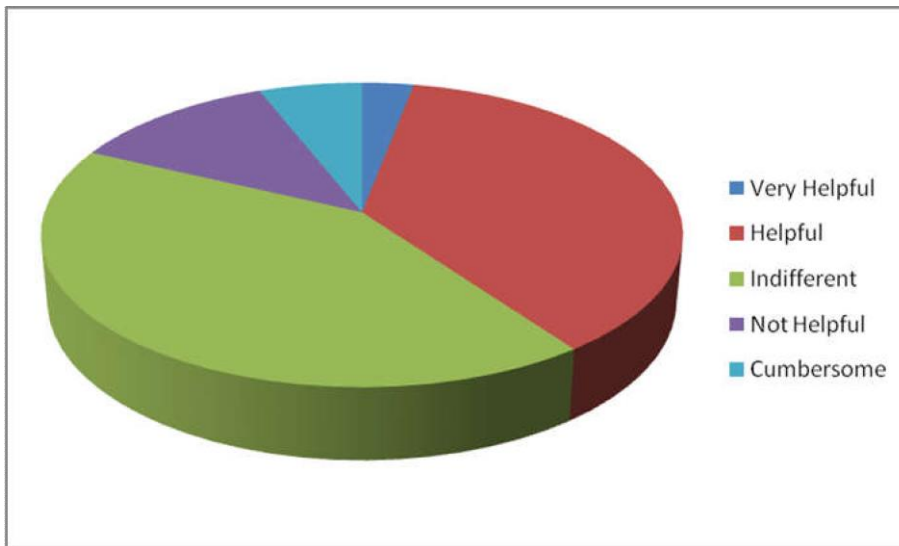
Q7 i. displaying of results and attendance records



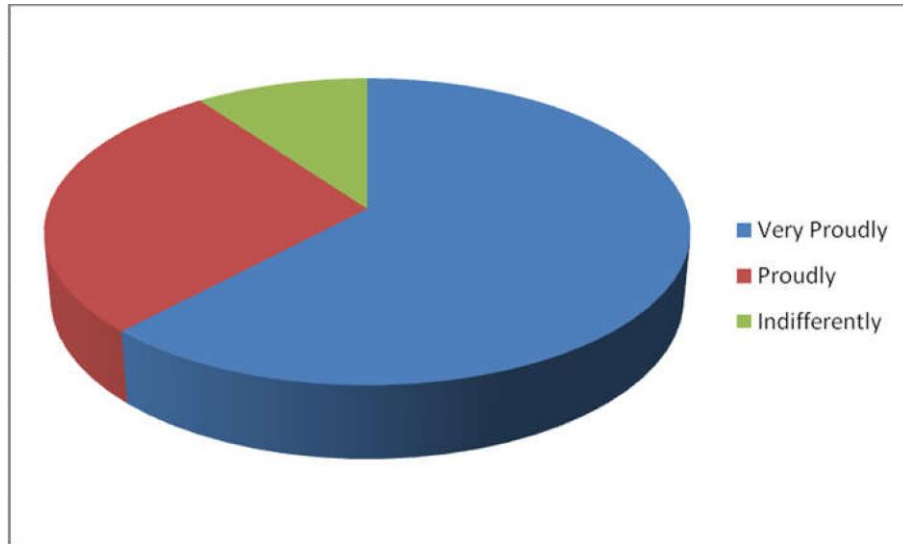
Q7 ii. Grievances/ problems are readdressed/solved well in time



8. How do you find college administrative office staff



9. After leaving the college how will you talk about institution



Satisfaction Score

- Students' satisfaction score towards infrastructure and facility: 81
- Students' satisfaction score towards syllabus: 75
- Students' satisfaction score towards Teachers: 77
- Students' satisfaction score towards Environment of the college: 69
- Parents' satisfaction Score: 70

The satisfaction scores indicate that Students and Parents are quite satisfied with different aspects related to college.

